



COTTAGE AU GRATIN PREMIER 524.129.v4 GR

Part of the **Savory Cottages Collection**.

In addition to our Terms and Conditions (the "Terms"), please be aware of the following:

Art Form Architecture, LLC ("Artform") requires that our Drawings be built substantially as designed. Artform will not be obligated by or liable for use of this design with markups as part of any builder agreement. While we attempt to accommodate where possible and reasonable, and where the changes do not denigrate our design, any and all changes to Drawings must be approved in writing by Artform. It is recommended that you have your Drawing updated by Artform prior to attaching any Drawing to any builder agreement. Artform shall not be responsible for the misuse of or unauthorized alterations to any of its Drawings.



Width 50.00 FT

Depth 48.00 FT

Height 24.66 FT

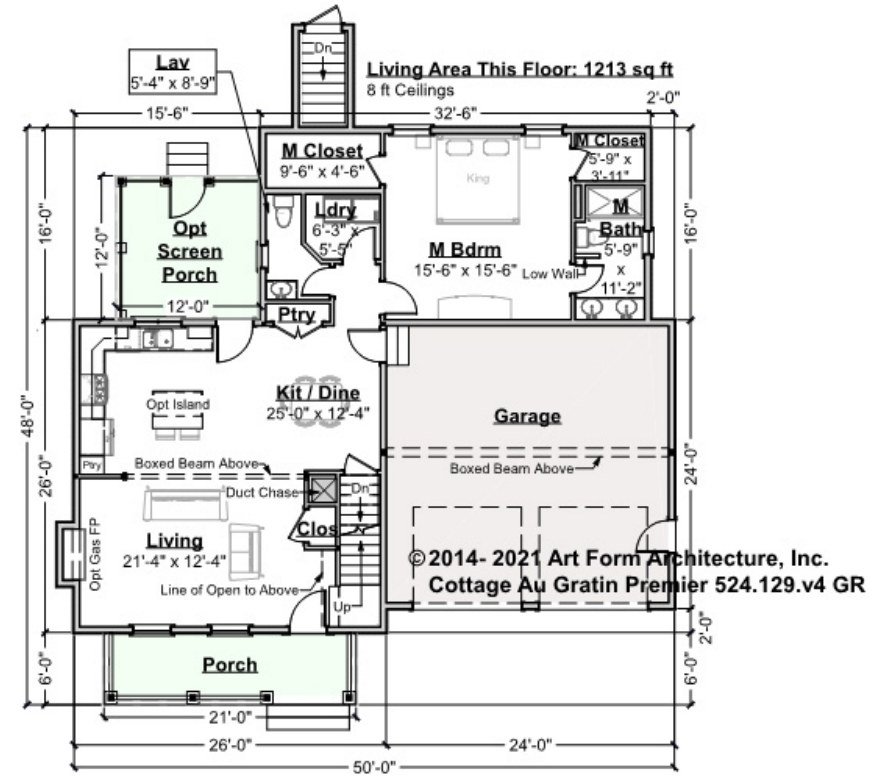
| LIVING AREA | | BEDROOMS | | BATHROOMS | |
|----------------------|---------|----------------------|---|----------------------|-----|
| | 2242 FT | | 4 | | 2.5 |
| Main | 1862 FT | Main | 3 | Main | 2.5 |
| Future | 380 FT | Future | 1 | Future | 0 |
| 2 nd Unit | 0 FT | 2 nd Unit | 0 | 2 nd Unit | 0 |



COTTAGE AU GRATIN PREMIER - 1ST FLOOR

524.129.v4 GR

Some features shown are optional. Your Purchase & Sale Agreement governs, whether items are labeled "optional" in this document or not.



CLG HT SHOWN 8'-0" CLG HT POSSIBLE 8'-0"

* Major Change Fee, see website plan page for cost

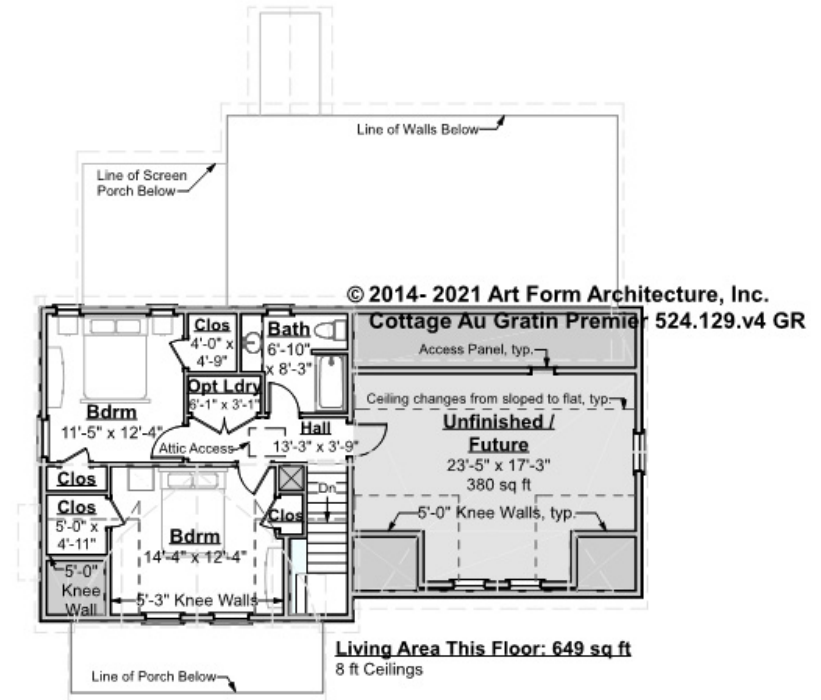
| F1 LIVING AREA | 1213 FT | F1 BEDROOMS | 1 | F1 BATHROOMS | 1.5 |
|----------------------|------------|----------------------|------|----------------------|------|
| Main | 1213.00 FT | Main | 1.00 | Main | 1.50 |
| Future | 0.00 FT | Future | 0.00 | Future | 0.00 |
| 2 nd Unit | 0.00 FT | 2 nd Unit | 0.00 | 2 nd Unit | 0.00 |



COTTAGE AU GRATIN PREMIER - 2ND FLOOR

524.129.v4 GR

Some features shown are optional. Your Purchase & Sale Agreement governs, whether items are labeled "optional" in this document or not.



CLG HT SHOWN 8'-0" CLG HT POSSIBLE 8'-0"

* Major Change Fee, see website plan page for cost

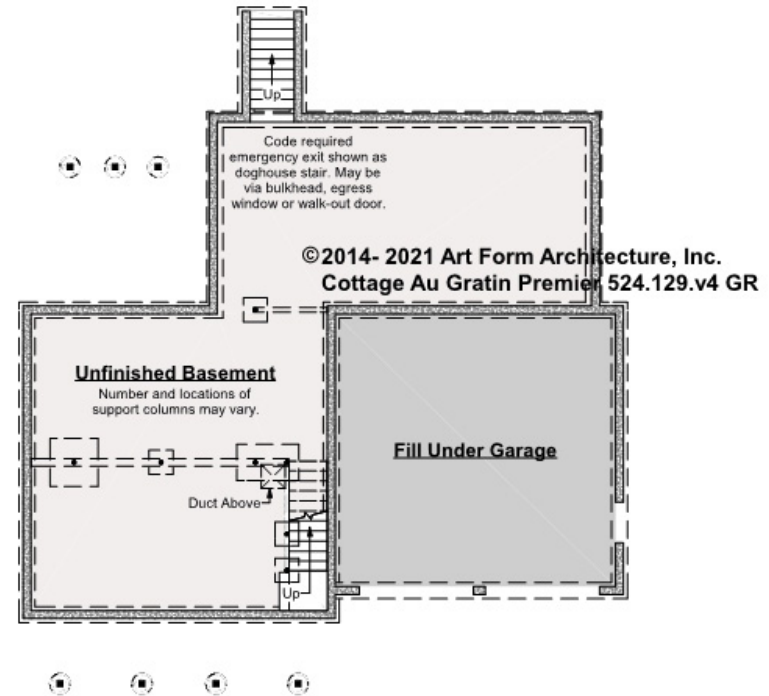
| F1 LIVING AREA | 1029 FT | F1 BEDROOMS | 3 | F1 BATHROOMS | 1 |
|----------------------|-----------|----------------------|------|----------------------|------|
| Main | 649.00 FT | Main | 2.00 | Main | 1.00 |
| Future | 380.00 FT | Future | 1.00 | Future | 0.00 |
| 2 nd Unit | 0.00 FT | 2 nd Unit | 0.00 | 2 nd Unit | 0.00 |



COTTAGE AU GRATIN PREMIER - BASEMENT

524.129.v4 GR

Some features shown are optional. Your Purchase & Sale Agreement governs, whether items are labeled "optional" in this document or not.



CLG HT SHOWN 7'-8" CLG HT POSSIBLE 9'-0"

* Major Change Fee, see website plan page for cost

| F1 LIVING AREA | | F1 BEDROOMS | | F1 BATHROOMS | |
|----------------------|------|----------------------|------|----------------------|------|
| 0 | FT | 0 | | 0 | |
| Main | 0.00 | Main | 0.00 | Main | 0.00 |
| Future | 0.00 | Future | 0.00 | Future | 0.00 |
| 2 nd Unit | 0.00 | 2 nd Unit | 0.00 | 2 nd Unit | 0.00 |



Art Form Architecture, LLC

COTTAGE AU GRATIN PREMIER - FRONT ELEVATION

524.129.v4 GR

Some features shown are optional. Your Purchase & Sale Agreement governs, whether items are labeled "optional" in this document or not.



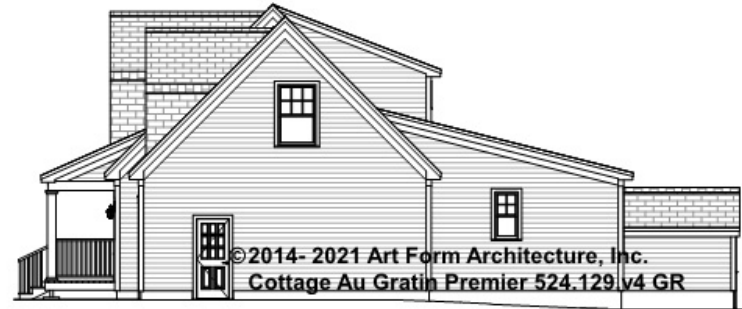


Art Form Architecture, LLC

COTTAGE AU GRATIN PREMIER - RIGHT ELEVATION

524.129.v4 GR

—
Some features shown are optional. Your Purchase & Sale Agreement governs, whether items are labeled "optional" in this document or not.





Art Form Architecture, LLC

COTTAGE AU GRATIN PREMIER - REAR ELEVATION

524.129.v4 GR

Some features shown are optional. Your Purchase & Sale Agreement governs, whether items are labeled "optional" in this document or not.





Art Form Architecture, LLC

COTTAGE AU GRATIN PREMIER - LEFT ELEVATION

524.129.v4 GR

—
Some features shown are optional. Your Purchase & Sale Agreement governs, whether items are labeled "optional" in this document or not.





Art Form Architecture, LLC

COTTAGE AU GRATIN PREMIER - REAR RENDER

524.129.v4 GR

—

Some features shown are optional. Your Purchase & Sale Agreement governs, whether items are labeled "optional" in this document or not.

