



COPPERFIELD

798.124

Note - this design has not yet been built. It's here to offer a starting point for customization. It's priced so that changes that do not increase the size significantly will be at no additional charge. Hourly design fees will apply if you make changes.

In addition to our Terms and Conditions (the "Terms"), please be aware of the following:

Art Form Architecture, LLC ("Artform") requires that our Drawings be built substantially as designed. Artform will not be obligated by or liable for use of this design with markups as part of any builder agreement. While we attempt to accommodate where possible and reasonable, and where the changes do not denigrate our design, any and all changes to Drawings must be approved in writing by Artform. It is recommended that you have your Drawing updated by Artform prior to attaching any Drawing to any builder agreement. Artform shall not be responsible for the misuse of or unauthorized alterations to any of its Drawings.



©2016-2023 Art Form Architecture, Inc. Copperfield 798.124

Width 30.90 FT

Depth 67.17 FT

Height 30.92 FT

LIVING AREA		BEDROOMS		BATHROOMS	
	4331 FT ²		5		4.5
Main	4331 FT ²	Main	4	Main	4.5
Future	0 FT ²	Future	1	Future	0
2 nd Unit	0 FT ²	2 nd Unit	0	2 nd Unit	0

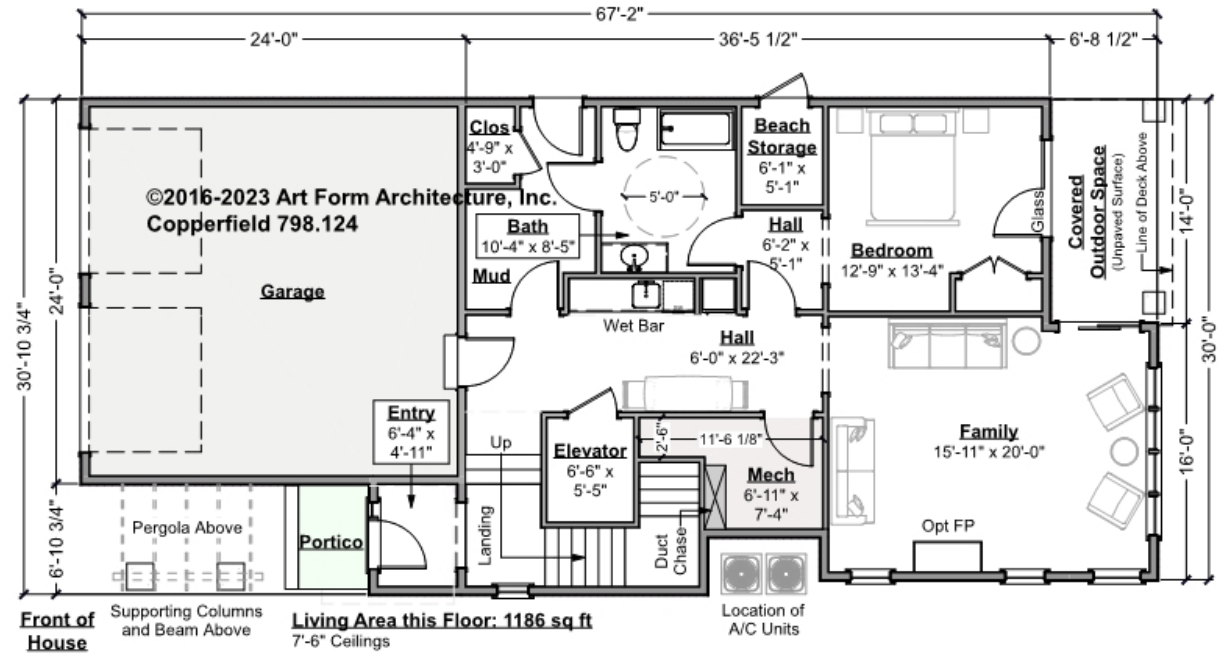


COPPERFIELD - 1ST FLOOR

798.124

First Floor has a ceiling height of 7'-6", please refer to floor plan image.

Some features shown are optional. Your Purchase & Sale Agreement governs, whether items are labeled "optional" in this document or not.



CLG HT SHOWN 7'-8" CLG HT POSSIBLE 9'-0"

* Major Change Fee, see website plan page for cost

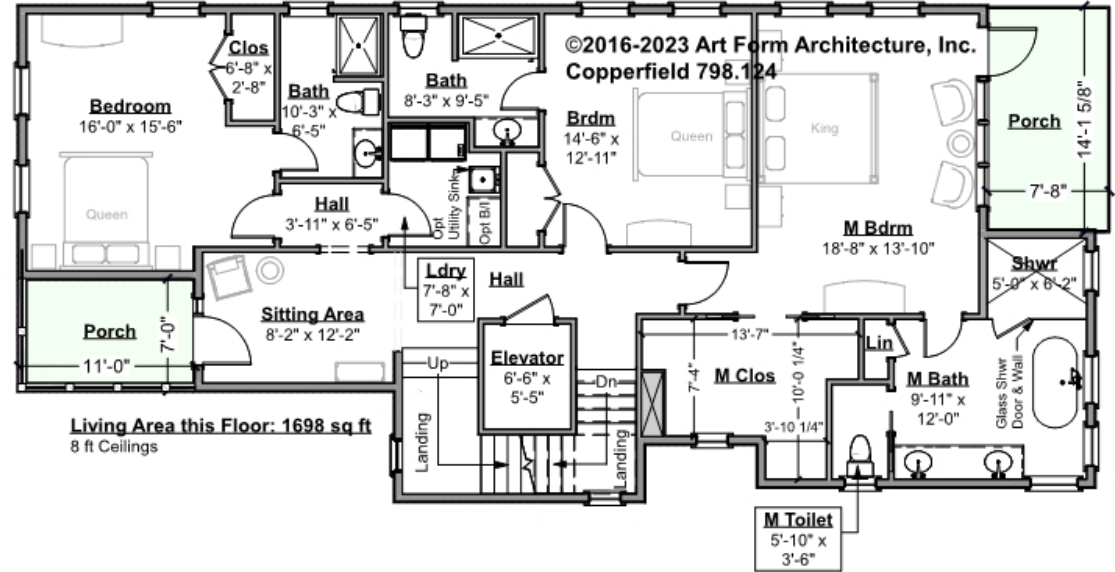
F1 LIVING AREA	1186 FT	F1 BEDROOMS	2	F1 BATHROOMS	1
Main	1186.00 FT	Main	1.00	Main	1.00
Future	FT	Future	1.00	Future	
2 nd Unit	FT	2 nd Unit		2 nd Unit	



COPPERFIELD - 2ND FLOOR

798.124

Some features shown are optional. Your Purchase & Sale Agreement governs, whether items are labeled "optional" in this document or not.



CLG HT SHOWN 8'-0" CLG HT POSSIBLE 9'-0"

* Major Change Fee, see website plan page for cost

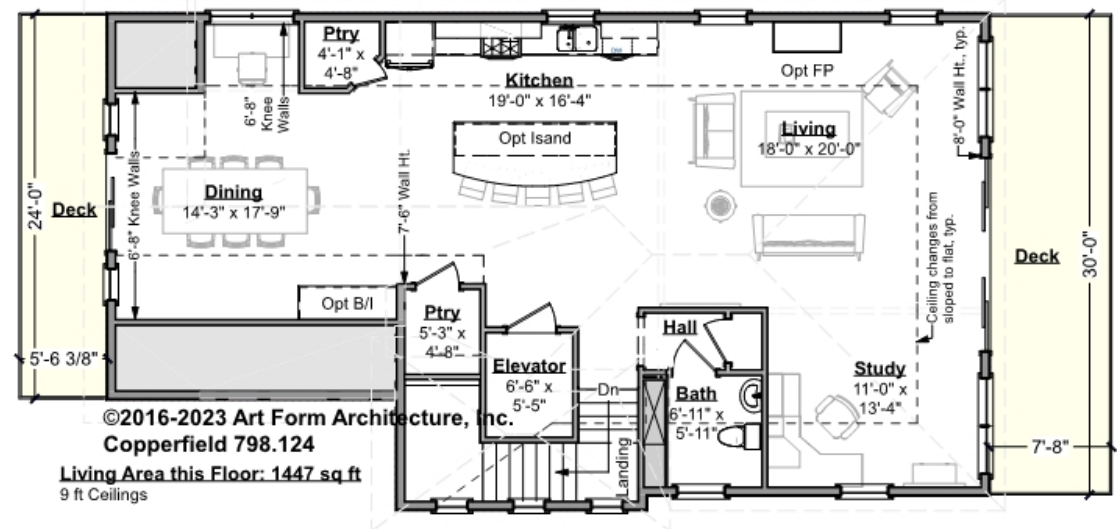
F1 LIVING AREA	1698 FT	F1 BEDROOMS	3	F1 BATHROOMS	3
Main	1698.00 FT	Main	3.00	Main	3.00
Future	FT	Future		Future	
2 nd Unit	FT	2 nd Unit		2 nd Unit	



COPPERFIELD - 3RD FLOOR

798.124

Some features shown are optional. Your Purchase & Sale Agreement governs, whether items are labeled "optional" in this document or not.



CLG HT SHOWN 9'-0"

CLG HT POSSIBLE 8'-0"

* Major Change Fee, see website plan page for cost

F1 LIVING AREA	1447 FT	F1 BEDROOMS	0	F1 BATHROOMS	0.5
Main	1447.00 FT	Main	0.00	Main	0.50
Future	FT	Future	0.00	Future	
2 nd Unit	FT	2 nd Unit		2 nd Unit	



Art Form Architecture, LLC

COPPERFIELD - 3RD FLOOR

798.124

Some features shown are optional. Your Purchase & Sale Agreement governs, whether items are labeled "optional" in this document or not.



Sloping Ceiling: View of Kitchen and Living Room - Additional Image



Art Form Architecture, LLC

COPPERFIELD - 3RD FLOOR

798.124

Some features shown are optional. Your Purchase & Sale Agreement governs, whether items are labeled "optional" in this document or not.



Sloping Ceiling: View of Living Room and Study - Additional Image



COPPERFIELD - FRONT ELEVATION&NBSP; 798.124

Some features shown are optional. Your Purchase & Sale Agreement governs, whether items are labeled "optional" in this document or not.

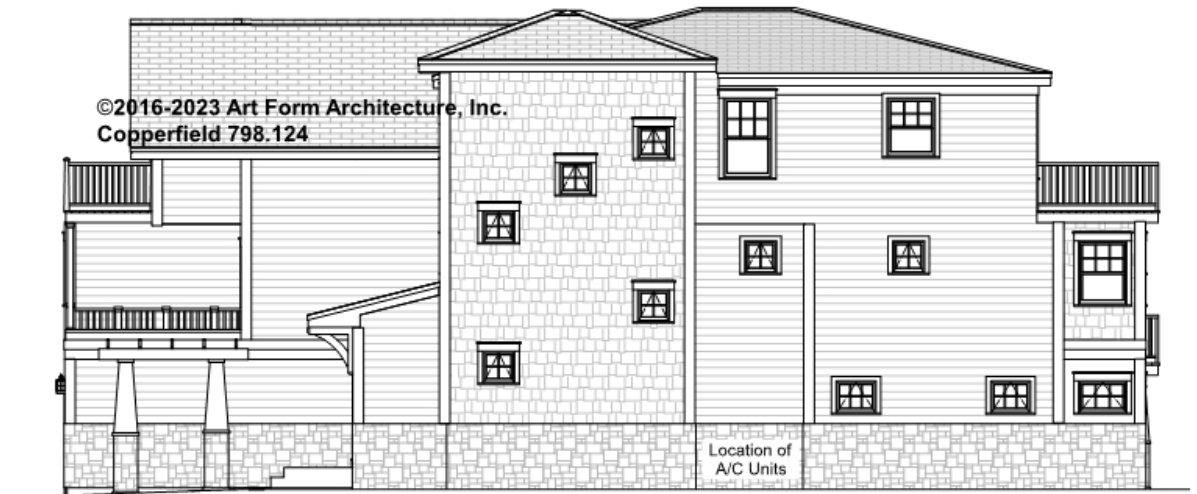




Art Form Architecture, LLC

COPPERFIELD - RIGHT ELEVATION&NBSP; 798.124

Some features shown are optional. Your Purchase & Sale Agreement governs, whether items are labeled "optional" in this document or not.





Art Form Architecture, LLC

COPPERFIELD - REAR ELEVATION&NBSP; 798.124

—
Some features shown are optional. Your Purchase & Sale Agreement governs, whether items are labeled "optional" in this document or not.



©2016-2023 Art Form Architecture, Inc.
Copperfield 798.124



Art Form Architecture, LLC

COPPERFIELD - LEFT ELEVATION&NBSP; 798.124

—
Some features shown are optional. Your Purchase & Sale Agreement governs, whether items are labeled "optional" in this document or not.





Art Form Architecture, LLC

COPPERFIELD - REAR RENDER

798.124

Some features shown are optional. Your Purchase & Sale Agreement governs, whether items are labeled "optional" in this document or not.

