



# CHRYSANTHEMUM PREMIER

## 780.129.v2 GR

In addition to our Terms and Conditions (the "Terms"), please be aware of the following:

Art Form Architecture, LLC ("Artform") requires that our Drawings be built substantially as designed. Artform will not be obligated by or liable for use of this design with markups as part of any builder agreement. While we attempt to accommodate where possible and reasonable, and where the changes do not denigrate our design, any and all changes to Drawings must be approved in writing by Artform. It is recommended that you have your Drawing updated by Artform prior to attaching any Drawing to any builder agreement. Artform shall not be responsible for the misuse of or unauthorized alterations to any of its Drawings.



©2015-2023 Art Form Architecture, Inc.  
Chrysanthemum Premier 780.129.v2 GR

Width 85.54 FT

Depth 61.75 FT

Height 28.08 FT

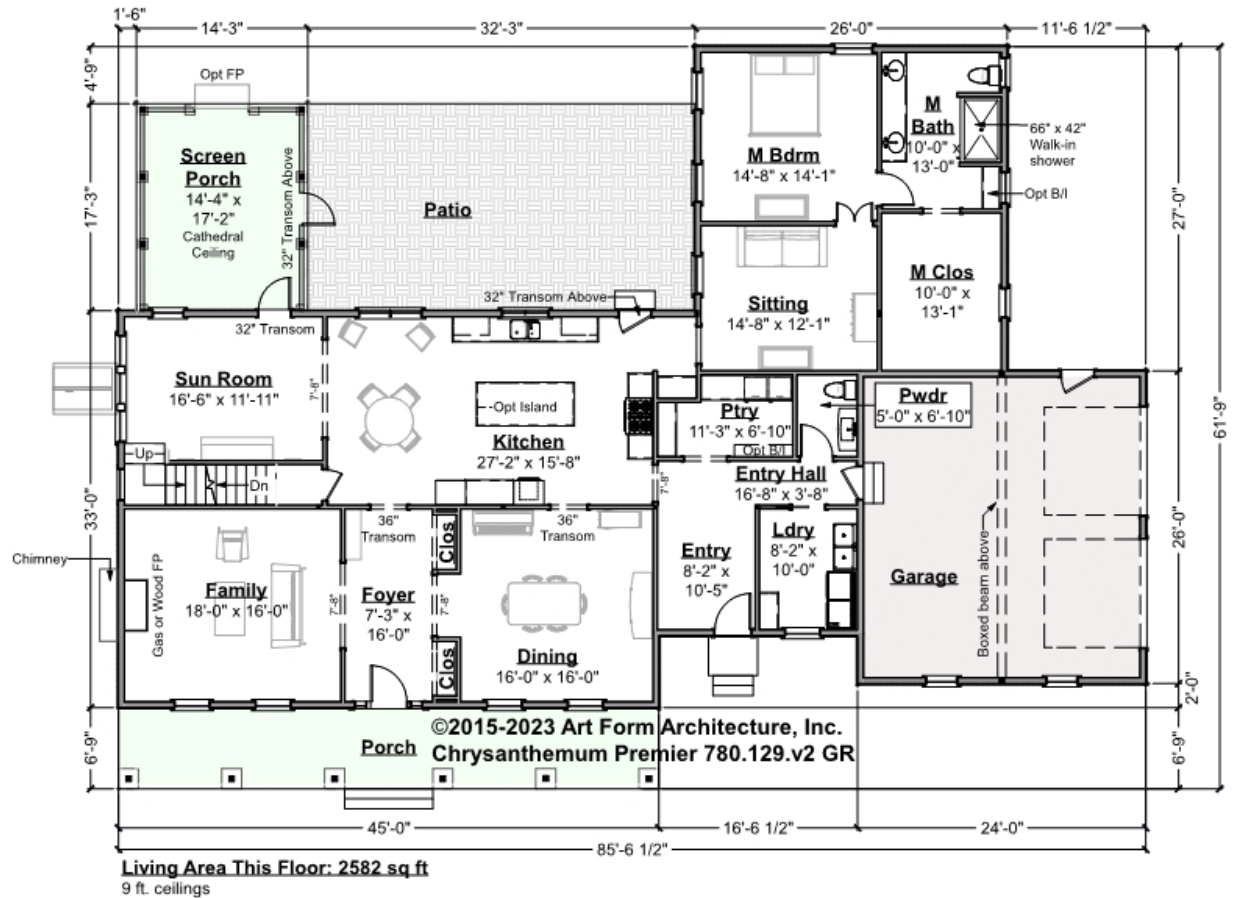
LIVING AREA		BEDROOMS		BATHROOMS	
	3774 FT		5		4.5
Main	3774 FT	Main	3	Main	3.5
Future	0 FT	Future	2	Future	1
2 <sup>nd</sup> Unit	0 FT	2 <sup>nd</sup> Unit	0	2 <sup>nd</sup> Unit	0



# CHRYSANTHEMUM PREMIER - 1<sup>ST</sup> FLOOR

780.129.v2 GR

Some features shown are optional. Your Purchase & Sale Agreement governs, whether items are labeled "optional" in this document or not.



CLG HT SHOWN 9'-0"    CLG HT POSSIBLE 8'-0"

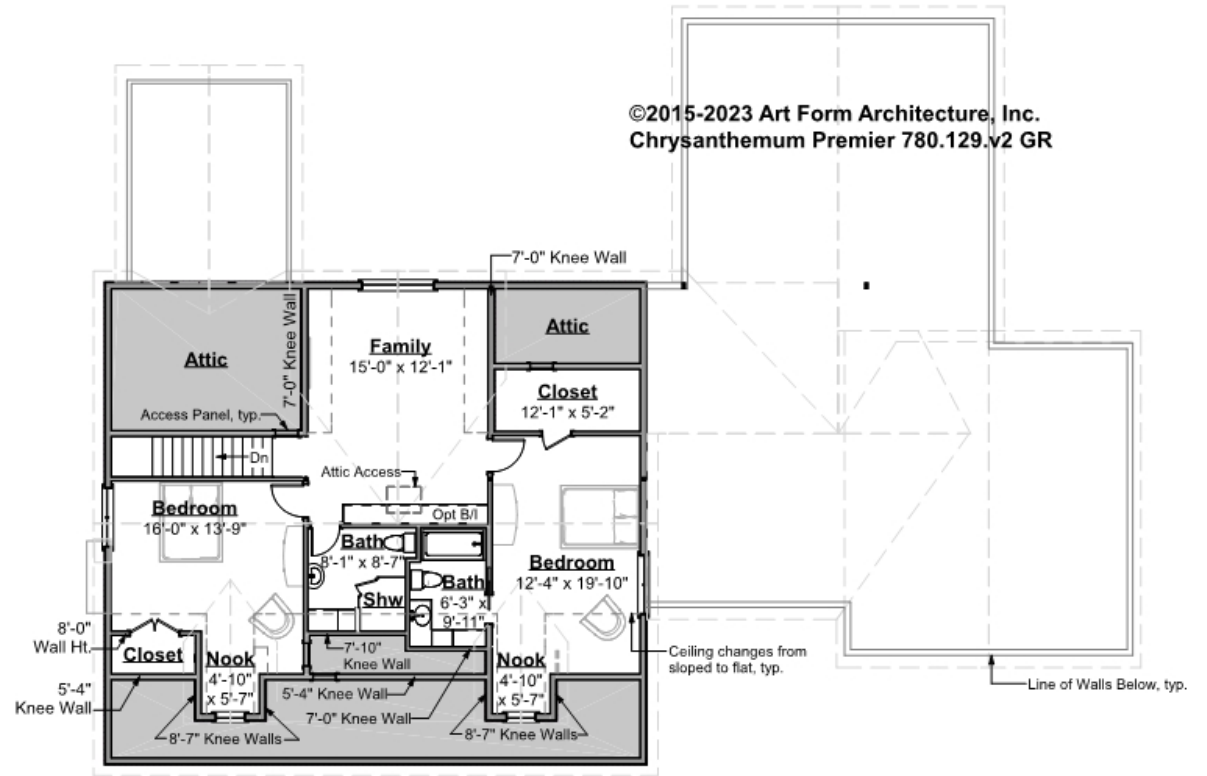
\* Major Change Fee, see website plan page for cost

F1 LIVING AREA	2582 <sup>FT</sup>	F1 BEDROOMS	2	F1 BATHROOMS	1.5
Main	2582.00 <sup>FT</sup>	Main	1.00	Main	1.50
Future	0.00 <sup>FT</sup>	Future	1.00	Future	0.00
2 <sup>nd</sup> Unit	0.00 <sup>FT</sup>	2 <sup>nd</sup> Unit	0.00	2 <sup>nd</sup> Unit	0.00



**CHRYSANTHEMUM PREMIER - 2<sup>ND</sup>  
FLOOR  
780.129.v2 GR**

Some features shown are optional. Your Purchase & Sale Agreement governs, whether items are labeled "optional" in this document or not.



©2015-2023 Art Form Architecture, Inc.  
Chrysanthemum Premier 780.129.v2 GR

**Living Area This Floor: 1192 sq ft**  
9 ft. ceilings

**CLG HT SHOWN 9'-0"    CLG HT POSSIBLE 8'-0"**

*\* Major Change Fee, see website plan page for cost*

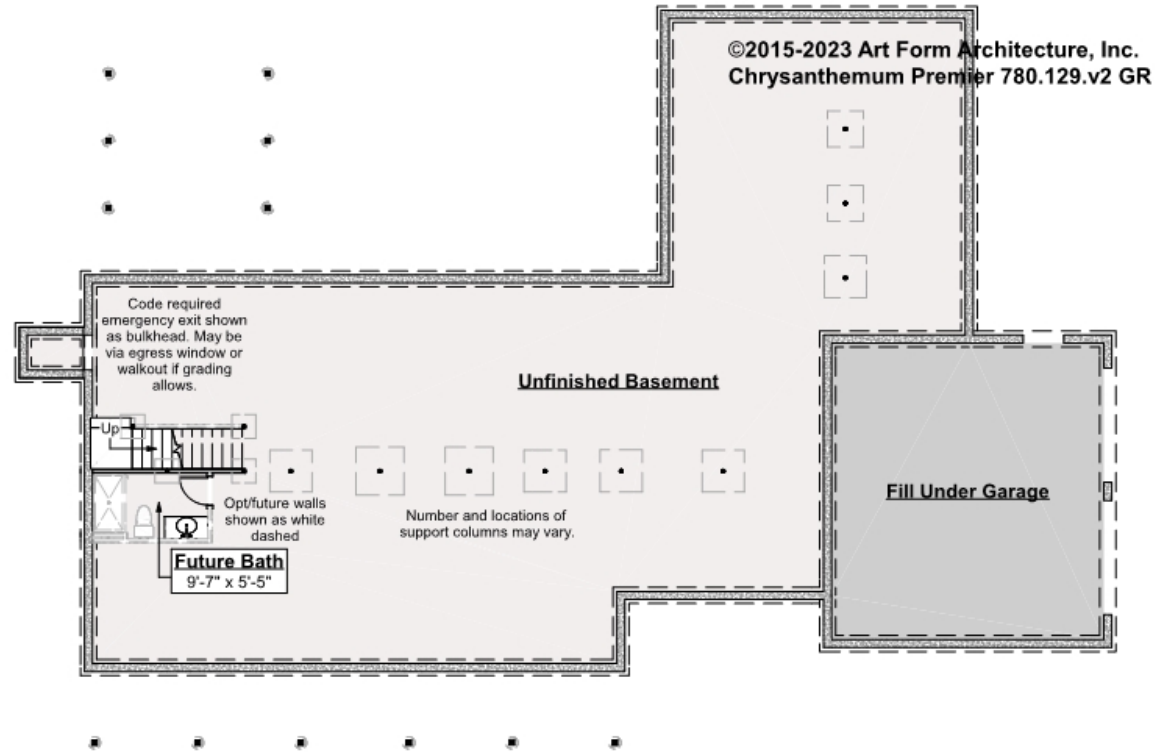
F1 LIVING AREA		F1 BEDROOMS		F1 BATHROOMS	
Main	1192.00 <sup>FT</sup>	Main	2.00	Main	2.00
Future	0.00 <sup>FT</sup>	Future	1.00	Future	0.00
2 <sup>nd</sup> Unit	0.00 <sup>FT</sup>	2 <sup>nd</sup> Unit	0.00	2 <sup>nd</sup> Unit	0.00



# CHRYSANTHEMUM PREMIER - BASEMENT 780.129.v2 GR

Note: finished basement area is NOT included in main or future Living Area, but IS shown on CDs. We do this so Search doesn't mislead - everyone knows you can finish a basement!

Some features shown are optional. Your Purchase & Sale Agreement governs, whether items are labeled "optional" in this document or not.



CLG HT SHOWN 7'-8"      CLG HT POSSIBLE 9'-0"

\* Major Change Fee, see website plan page for cost

F1 LIVING AREA		F1 BEDROOMS		F1 BATHROOMS	
	0 FT		0		1
Main	0.00 FT	Main	0.00	Main	0.00
Future	0.00 FT	Future	0.00	Future	1.00
2 <sup>nd</sup> Unit	0.00 FT	2 <sup>nd</sup> Unit	0.00	2 <sup>nd</sup> Unit	0.00

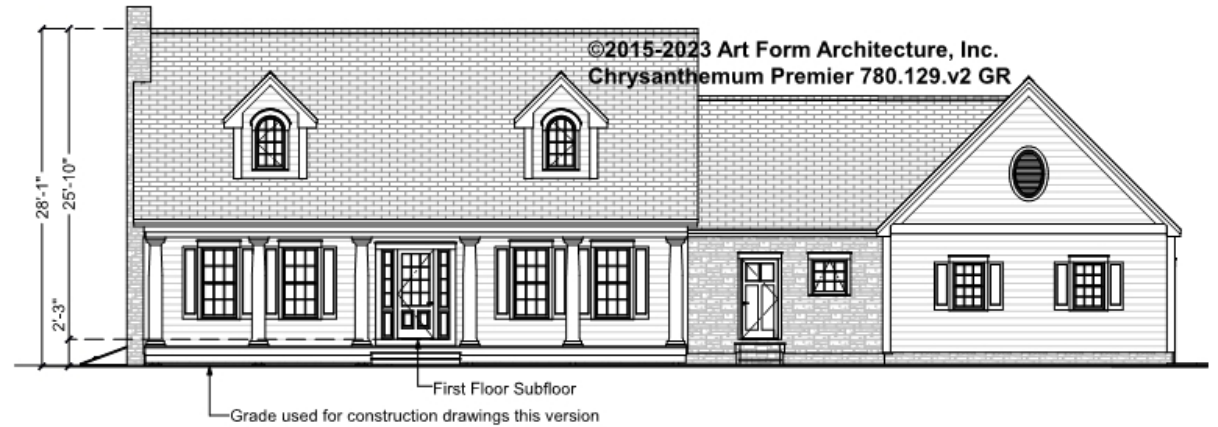


Art Form Architecture, LLC

## CHRYSANTHEMUM PREMIER - FRONT ELEVATION

780.129.v2 GR

Some features shown are optional. Your Purchase & Sale Agreement governs, whether items are labeled "optional" in this document or not.





Art Form Architecture, LLC

## CHRYSANTHEMUM PREMIER - RIGHT ELEVATION

780.129.v2 GR

Some features shown are optional. Your Purchase & Sale Agreement governs, whether items are labeled "optional" in this document or not.





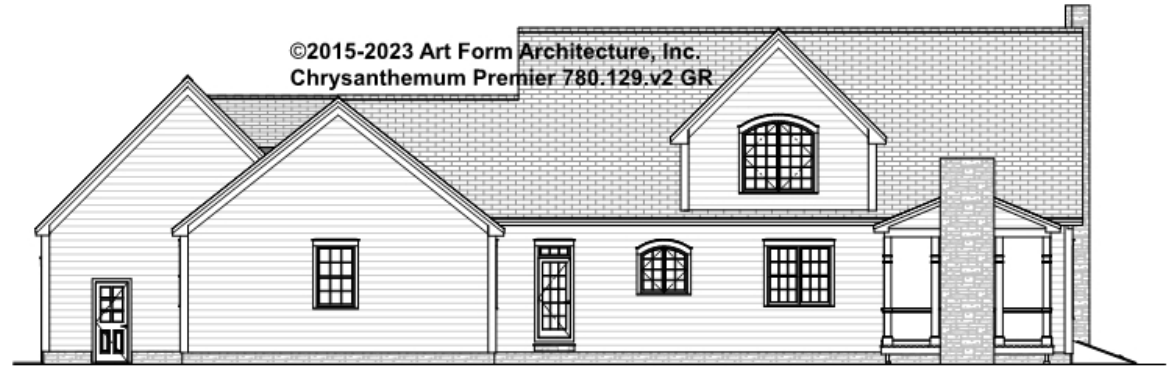


Art Form Architecture, LLC

## CHRYSANTHEMUM PREMIER - REAR ELEVATION

780.129.v2 GR

Some features shown are optional. Your Purchase & Sale Agreement governs, whether items are labeled "optional" in this document or not.





Art Form Architecture, LLC

## CHRYSANTHEMUM PREMIER - LEFT ELEVATION

780.129.v2 GR

Some features shown are optional. Your Purchase & Sale Agreement governs, whether items are labeled "optional" in this document or not.







Art Form Architecture, LLC

## CHRYSANTHEMUM PREMIER - REAR RENDER

780.129.v2 GR

—  
Some features shown are optional. Your Purchase & Sale Agreement governs, whether items are labeled "optional" in this document or not.

