



CHOCOLAT

929.144.v3 GR

In addition to our Terms and Conditions (the "Terms"), please be aware of the following:

Art Form Architecture, LLC ("Artform") requires that our Drawings be built substantially as designed. Artform will not be obligated by or liable for use of this design with markups as part of any builder agreement. While we attempt to accommodate where possible and reasonable, and where the changes do not denigrate our design, any and all changes to Drawings must be approved in writing by Artform. It is recommended that you have your Drawing updated by Artform prior to attaching any Drawing to any builder agreement. Artform shall not be responsible for the misuse of or unauthorized alterations to any of its Drawings.



Width 76.00 FT

Depth 61.75 FT

Height 22.67 FT

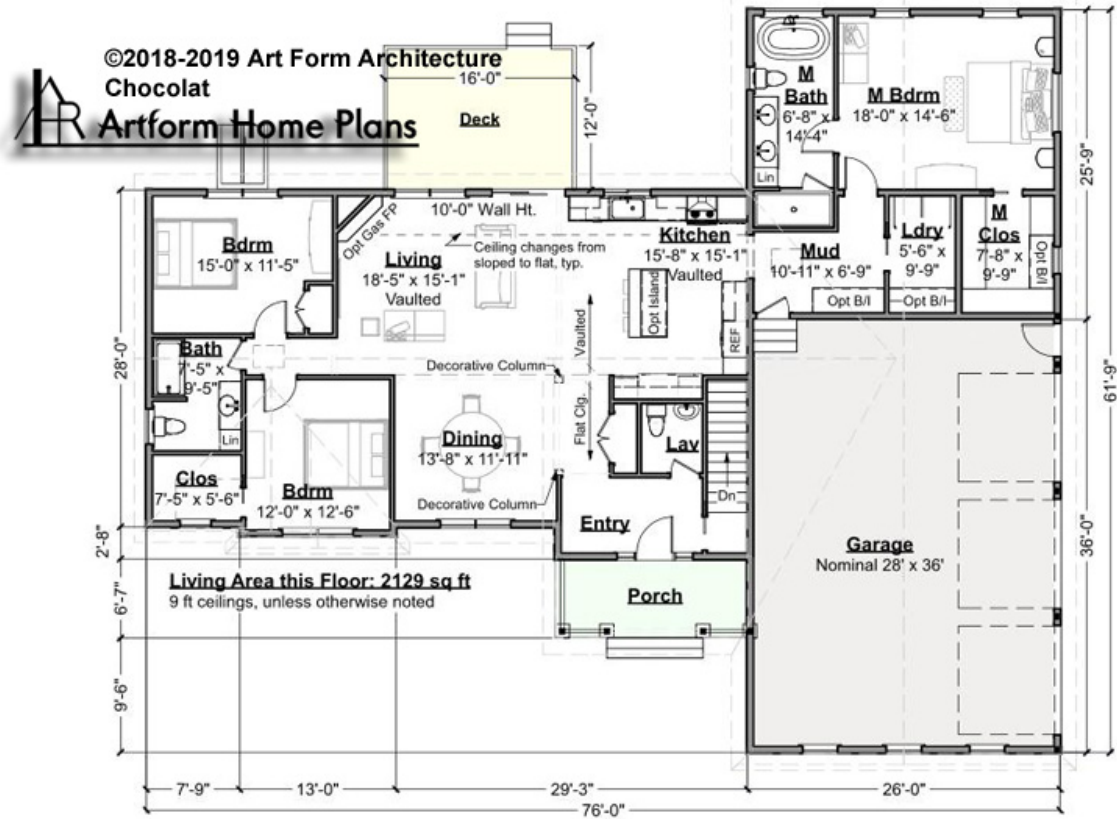
LIVING AREA		BEDROOMS		BATHROOMS	
	2129 FT		3		2.5
Main	2129 FT	Main	3	Main	2.5
Future	0 FT	Future	0	Future	0
2 nd Unit	0 FT	2 nd Unit	0	2 nd Unit	0



CHOCOLAT - 1ST FLOOR

929.144.v3 GR

Some features shown are optional. Your Purchase & Sale Agreement governs, whether items are labeled "optional" in this document or not.



CLG HT SHOWN 9'-0" CLG HT POSSIBLE 8'-0"

* Major Change Fee, see website plan page for cost

F1 LIVING AREA	2129 ^{FT}	F1 BEDROOMS	3	F1 BATHROOMS	2.5
Main	2129.00 ^{FT}	Main	3.00	Main	2.50
Future	0.00 ^{FT}	Future	0.00	Future	0.00
2 nd Unit	0.00 ^{FT}	2 nd Unit	0.00	2 nd Unit	0.00



Art Form Architecture, LLC

CHOCOLAT - 1ST FLOOR

929.144.v3 GR

Some features shown are optional. Your Purchase & Sale Agreement governs, whether items are labeled "optional" in this document or not.



Dining & Entry - Additional Image



Art Form Architecture, LLC

CHOCOLAT - 1ST FLOOR

929.144.v3 GR

—
Some features shown are optional. Your Purchase & Sale Agreement governs, whether items are labeled "optional" in this document or not.



Kitchen - Additional Image

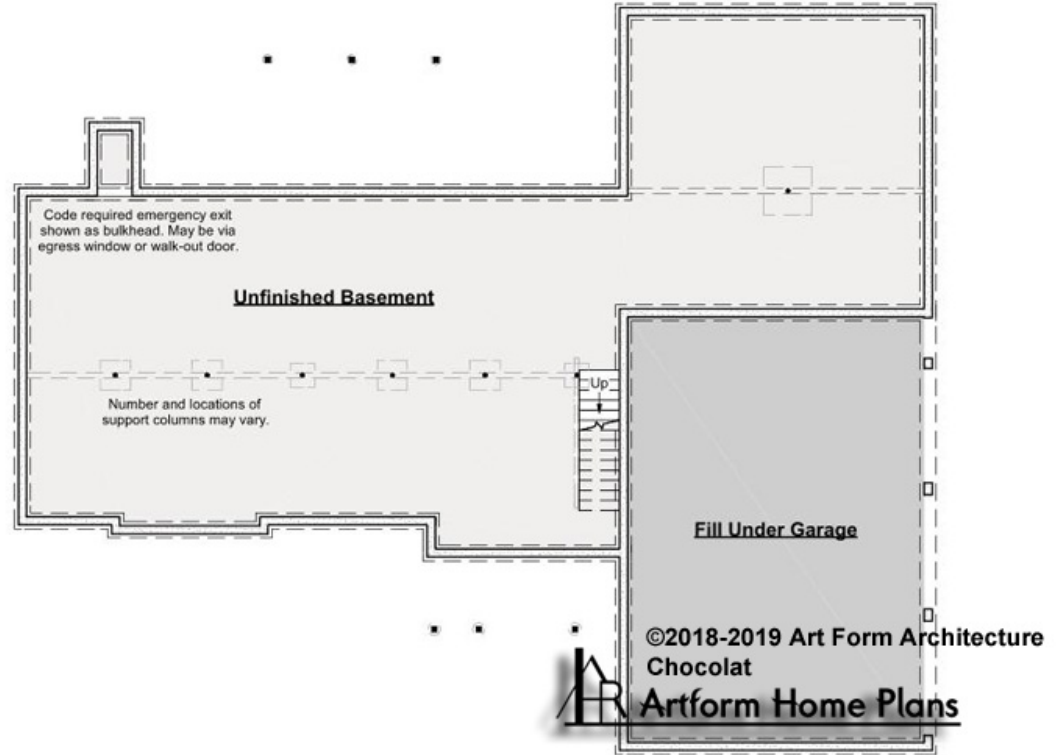


CHOCOLAT - BASEMENT

929.144.v3 GR

Note - not shown here, this basement is over 2000 sf. Under the new code it requires a second means of egress (which can be an egress window/window well).

Some features shown are optional. Your Purchase & Sale Agreement governs, whether items are labeled "optional" in this document or not.



CLG HT SHOWN 7'-8" CLG HT POSSIBLE 9'-0"

* Major Change Fee, see website plan page for cost

F1 LIVING AREA		F1 BEDROOMS		F1 BATHROOMS	
	0 FT		0		0
Main	0.00 FT	Main	0.00	Main	0.00
Future	0.00 FT	Future	0.00	Future	0.00
2 nd Unit	0.00 FT	2 nd Unit	0.00	2 nd Unit	0.00

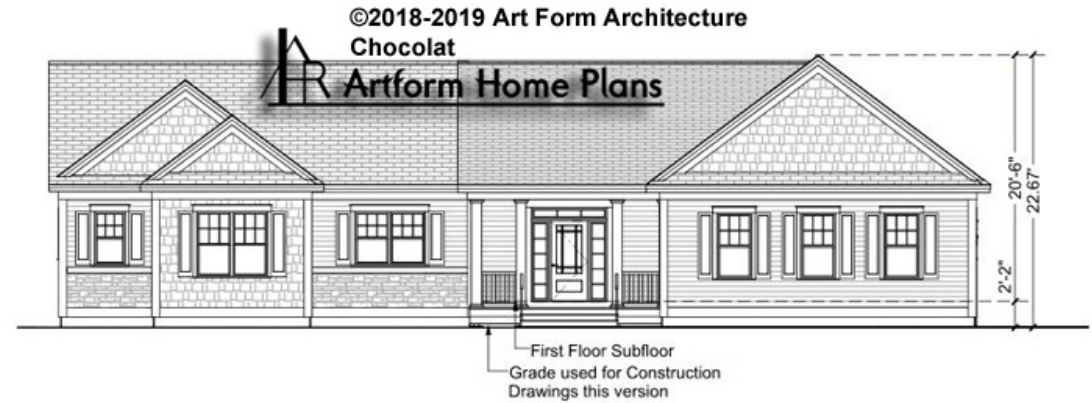


Art Form Architecture, LLC

CHOCOLAT - FRONT ELEVATION

929.144.v3 GR

Some features shown are optional. Your Purchase & Sale Agreement governs, whether items are labeled "optional" in this document or not.





Art Form Architecture, LLC

CHOCOLAT - RIGHT ELEVATION

929.144.v3 GR

Some features shown are optional. Your Purchase & Sale Agreement governs, whether items are labeled "optional" in this document or not.





Art Form Architecture, LLC

CHOCOLAT - REAR ELEVATION

929.144.v3 GR

Some features shown are optional. Your Purchase & Sale Agreement governs, whether items are labeled "optional" in this document or not.





Art Form Architecture, LLC

CHOCOLAT - LEFT ELEVATION

929.144.v3 GR

Some features shown are optional. Your Purchase & Sale Agreement governs, whether items are labeled "optional" in this document or not.

