



CARTER

1016.124 GL

In addition to our Terms and Conditions (the "Terms"), please be aware of the following:

Art Form Architecture, LLC ("Artform") requires that our Drawings be built substantially as designed. Artform will not be obligated by or liable for use of this design with markups as part of any builder agreement. While we attempt to accommodate where possible and reasonable, and where the changes do not denigrate our design, any and all changes to Drawings must be approved in writing by Artform. It is recommended that you have your Drawing updated by Artform prior to attaching any Drawing to any builder agreement. Artform shall not be responsible for the misuse of or unauthorized alterations to any of its Drawings.



Width 43.63 ^{FT}

Depth 57.50 ^{FT}

Height 32.58 ^{FT}

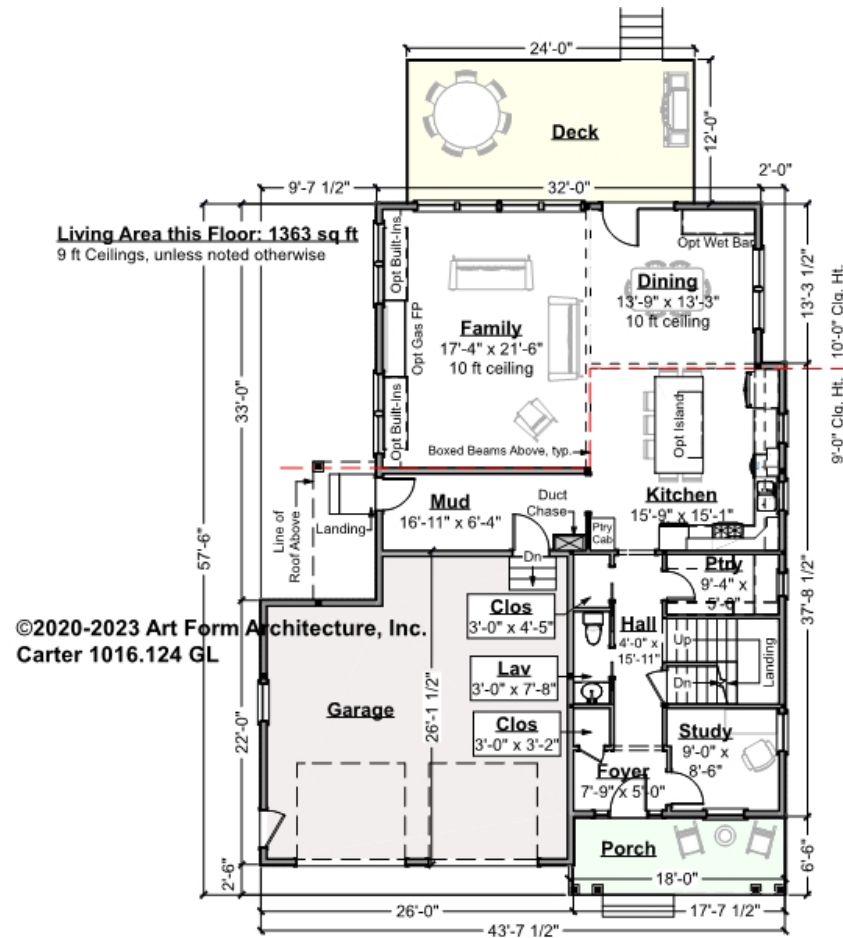
LIVING AREA		BEDROOMS		BATHROOMS	
	3057 ^{FT}		5		2.5
Main	2670 ^{FT}	Main	3	Main	2.5
Future	387 ^{FT}	Future	2	Future	0
2 nd Unit	0 ^{FT}	2 nd Unit	0	2 nd Unit	0



CARTER - 1ST FLOOR

1016.124 GL

Some features shown are optional. Your Purchase & Sale Agreement governs, whether items are labeled "optional" in this document or not.



©2020-2023 Art Form Architecture, Inc.
Carter 1016.124 GL

CLG HT SHOWN 9'-0" CLG HT POSSIBLE 8'-0"

* Major Change Fee, see website plan page for cost

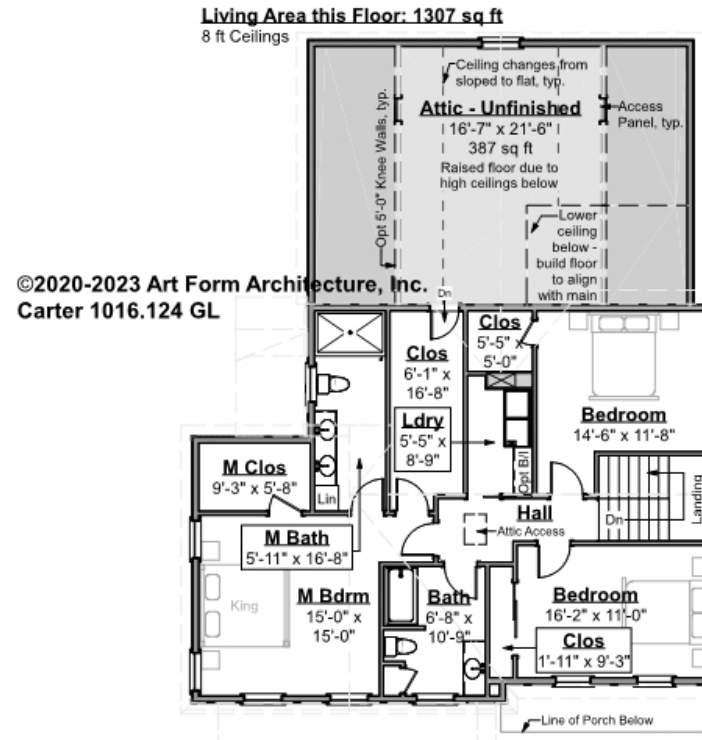
F1 LIVING AREA	1363 FT	F1 BEDROOMS	1	F1 BATHROOMS	0.5
Main	1363.00 FT	Main	0.00	Main	0.50
Future	0.00 FT	Future	1.00	Future	0.00
2 nd Unit	0.00 FT	2 nd Unit	0.00	2 nd Unit	0.00



CARTER - 2ND FLOOR

1016.124 GL

Some features shown are optional. Your Purchase & Sale Agreement governs, whether items are labeled "optional" in this document or not.



CLG HT SHOWN 8'-0" CLG HT POSSIBLE 9'-0"

* Major Change Fee, see website plan page for cost

F1 LIVING AREA	1694 FT	F1 BEDROOMS	4	F1 BATHROOMS	2
Main	1307.00 FT	Main	3.00	Main	2.00
Future	387.00 FT	Future	1.00	Future	0.00
2 nd Unit	0.00 FT	2 nd Unit	0.00	2 nd Unit	0.00



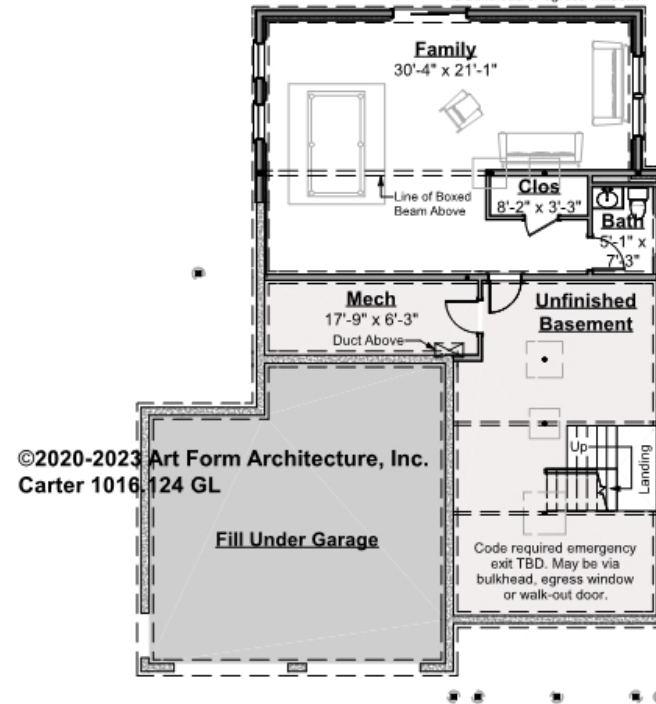
CARTER - BASEMENT

1016.124 GL

Some features shown are optional. Your Purchase & Sale Agreement governs, whether items are labeled "optional" in this document or not.

Finished Area this Floor: 736 sq ft
 Ceiling Heights May Vary: 8 ft Forms

Code required emergency exit shown as walk-out door. May be via bulkhead or egress window.



©2020-2023 Art Form Architecture, Inc.
 Carter 1016.124 GL

CLG HT SHOWN 8'-0"

CLG HT POSSIBLE 9'-0"

* Major Change Fee, see website plan page for cost

F1 LIVING AREA		F1 BEDROOMS		F1 BATHROOMS	
0	FT	0		0	
Main	0.00	Main	0.00	Main	0.00
Future	0.00	Future	0.00	Future	0.00
2 nd Unit	0.00	2 nd Unit	0.00	2 nd Unit	0.00



CARTER - FRONT ELEVATION

1016.124 GL

Some features shown are optional. Your Purchase & Sale Agreement governs, whether items are labeled "optional" in this document or not.





Art Form Architecture, LLC

CARTER - RIGHT ELEVATION

1016.124 GL

Some features shown are optional. Your Purchase & Sale Agreement governs, whether items are labeled "optional" in this document or not.





Art Form Architecture, LLC

CARTER - REAR ELEVATION

1016.124 GL

Some features shown are optional. Your Purchase & Sale Agreement governs, whether items are labeled "optional" in this document or not.

©2020-2023 Art Form Architecture, Inc.
Carter 1016.124 GL





Art Form Architecture, LLC

CARTER - LEFT ELEVATION

1016.124 GL

Some features shown are optional. Your Purchase & Sale Agreement governs, whether items are labeled "optional" in this document or not.

