



# CAPPUCCINO

## 1040.124.v11 GR

In addition to our Terms and Conditions (the "Terms"), please be aware of the following:

Art Form Architecture, LLC ("Artform") requires that our Drawings be built substantially as designed. Artform will not be obligated by or liable for use of this design with markups as part of any builder agreement. While we attempt to accommodate where possible and reasonable, and where the changes do not denigrate our design, any and all changes to Drawings must be approved in writing by Artform. It is recommended that you have your Drawing updated by Artform prior to attaching any Drawing to any builder agreement. Artform shall not be responsible for the misuse of or unauthorized alterations to any of its Drawings.



Width 48.00 FT

Depth 38.00 FT

Height 25.58 FT

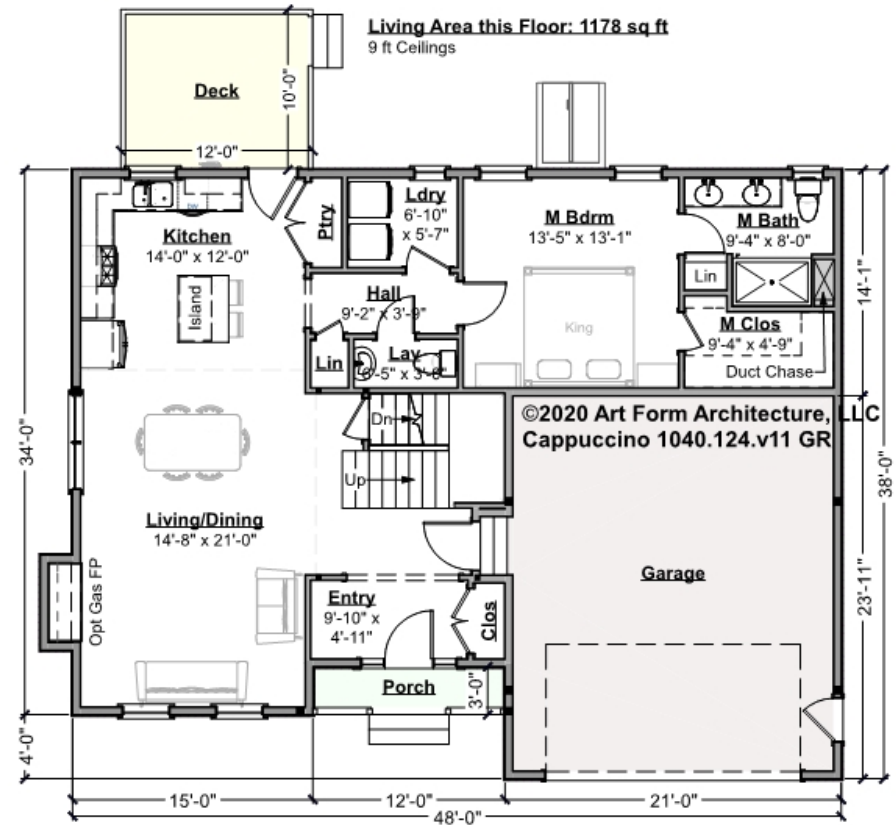
LIVING AREA		BEDROOMS		BATHROOMS	
	1998 FT		3		2.5
Main	1998 FT	Main	3	Main	2.5
Future	0 FT	Future	0	Future	0
2 <sup>nd</sup> Unit	0 FT	2 <sup>nd</sup> Unit	0	2 <sup>nd</sup> Unit	0



# CAPPUCCINO - 1<sup>ST</sup> FLOOR

## 1040.124.v11 GR

Some features shown are optional. Your Purchase & Sale Agreement governs, whether items are labeled "optional" in this document or not.



CLG HT SHOWN 9'-0"    CLG HT POSSIBLE 8'-0"

\* Major Change Fee, see website plan page for cost

F1 LIVING AREA	1178 FT	F1 BEDROOMS	1	F1 BATHROOMS	1.5
Main	1178.00 FT	Main	1.00	Main	1.50
Future	FT	Future		Future	
2 <sup>nd</sup> Unit	FT	2 <sup>nd</sup> Unit		2 <sup>nd</sup> Unit	

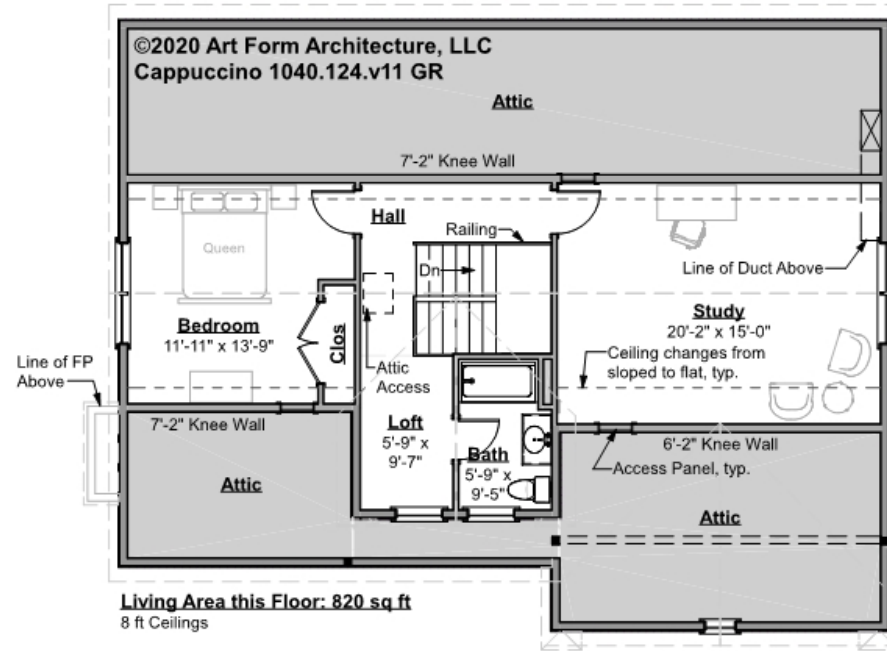


# CAPPUCCINO - 2<sup>ND</sup> FLOOR

## 1040.124.v11 GR

Most buyers of this plan would use the Study space as a Bedroom, which is why this plan is listed as a (3) Bedroom House. If you do intend to use this space as a Bedroom, we can add in the Closet for you at no additional charge.

Some features shown are optional. Your Purchase & Sale Agreement governs, whether items are labeled "optional" in this document or not.



CLG HT SHOWN 8'-0"      CLG HT POSSIBLE 9'-0"

\* Major Change Fee, see website plan page for cost

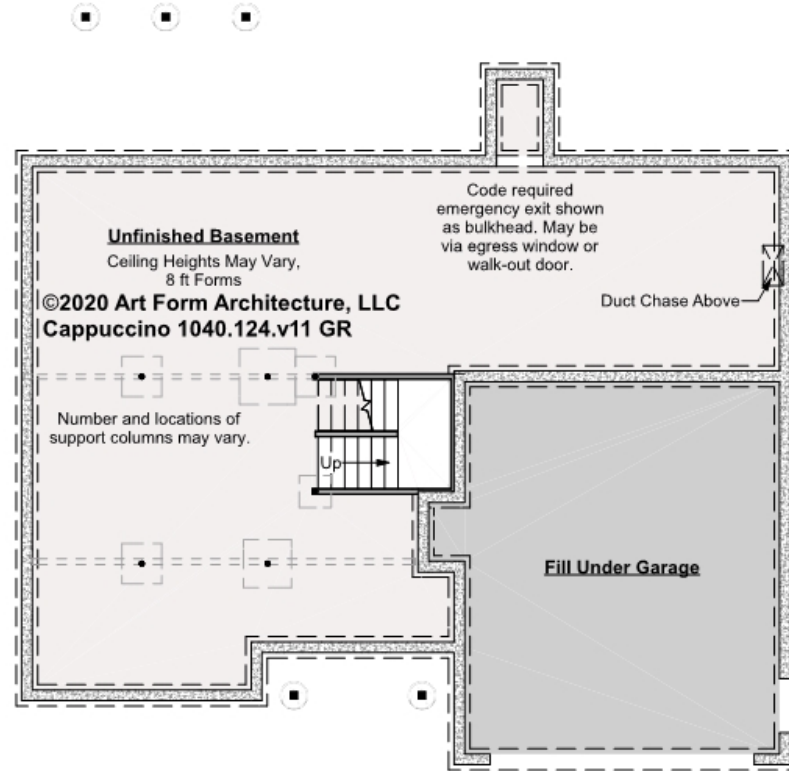
F1 LIVING AREA	820 <sup>FT</sup>	F1 BEDROOMS	2	F1 BATHROOMS	1
Main	820.00 <sup>FT</sup>	Main	2.00	Main	1.00
Future	FT	Future		Future	
2 <sup>nd</sup> Unit	FT	2 <sup>nd</sup> Unit		2 <sup>nd</sup> Unit	



# CAPPUCCINO - BASEMENT

## 1040.124.v11 GR

Some features shown are optional. Your Purchase & Sale Agreement governs, whether items are labeled "optional" in this document or not.



**CLG HT SHOWN 7'-8"      CLG HT POSSIBLE 10' & Up**

*\* Major Change Fee, see website plan page for cost*

F1 LIVING AREA		F1 BEDROOMS		F1 BATHROOMS	
0	FT	0		0	
Main	FT	Main		Main	
Future	FT	Future		Future	
2 <sup>nd</sup> Unit	FT	2 <sup>nd</sup> Unit		2 <sup>nd</sup> Unit	



## CAPPUCCINO - FRONT ELEVATION

### 1040.124.v11 GR

Some features shown are optional. Your Purchase & Sale Agreement governs, whether items are labeled "optional" in this document or not.





Art Form Architecture, LLC

## CAPPUCCINO - RIGHT ELEVATION

### 1040.124.v11 GR

Some features shown are optional. Your Purchase & Sale Agreement governs, whether items are labeled "optional" in this document or not.





Art Form Architecture, LLC

## CAPPUCCINO - REAR ELEVATION

### 1040.124.v11 GR

Some features shown are optional. Your Purchase & Sale Agreement governs, whether items are labeled "optional" in this document or not.



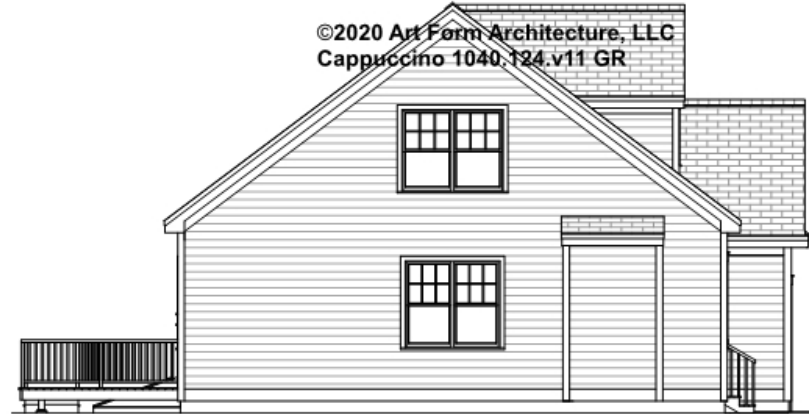


Art Form Architecture, LLC

## CAPPUCCINO - LEFT ELEVATION

### 1040.124.v11 GR

Some features shown are optional. Your Purchase & Sale Agreement governs, whether items are labeled "optional" in this document or not.







Art Form Architecture, LLC

## CAPPUCCINO - REAR RENDER

### 1040.124.v11 GR

Some features shown are optional. Your Purchase & Sale Agreement governs, whether items are labeled "optional" in this document or not.

