



## CALEB PRIME EXPANDED

591.122.v5 GR

In addition to our Terms and Conditions (the "Terms"), please be aware of the following:

Art Form Architecture, LLC ("Artform") requires that our Drawings be built substantially as designed. Artform will not be obligated by or liable for use of this design with markups as part of any builder agreement. While we attempt to accommodate where possible and reasonable, and where the changes do not denigrate our design, any and all changes to Drawings must be approved in writing by Artform. It is recommended that you have your Drawing updated by Artform prior to attaching any Drawing to any builder agreement. Artform shall not be responsible for the misuse of or unauthorized alterations to any of its Drawings.



Width 50.00 FT

Depth 32.50 FT

Height 32.25 FT

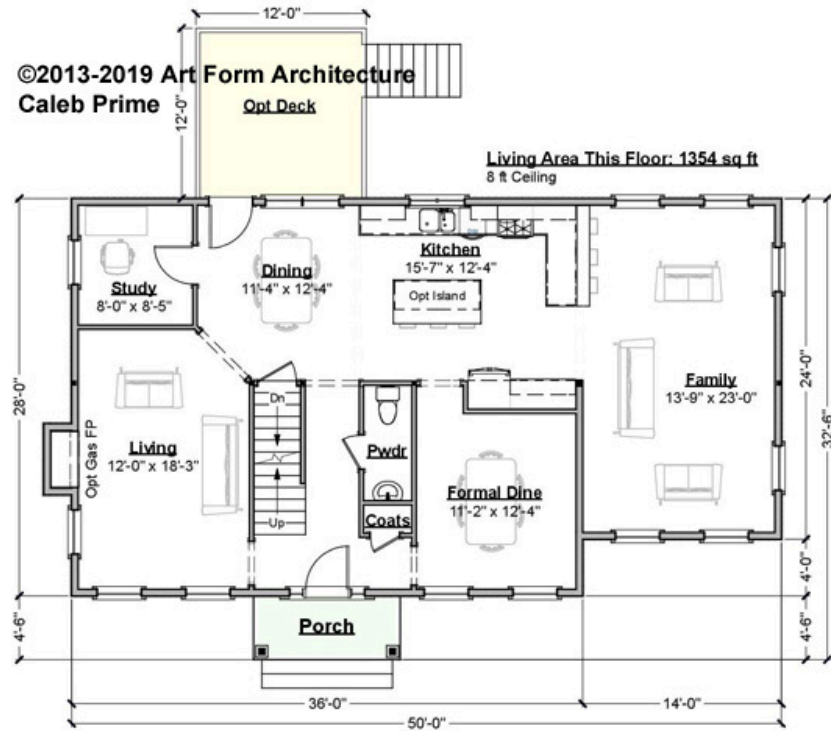
LIVING AREA		BEDROOMS		BATHROOMS	
	3078 FT		6		2.5
Main	2495 FT	Main	3	Main	2.5
Future	583 FT	Future	3	Future	0
2 <sup>nd</sup> Unit	0 FT	2 <sup>nd</sup> Unit	0	2 <sup>nd</sup> Unit	0



# CALEB PRIME EXPANDED - 1<sup>ST</sup> FLOOR

## 591.122.v5 GR

Some features shown are optional. Your Purchase & Sale Agreement governs, whether items are labeled "optional" in this document or not.



CLG HT SHOWN 8'-0"      CLG HT POSSIBLE 8'-0"

\* Major Change Fee, see website plan page for cost

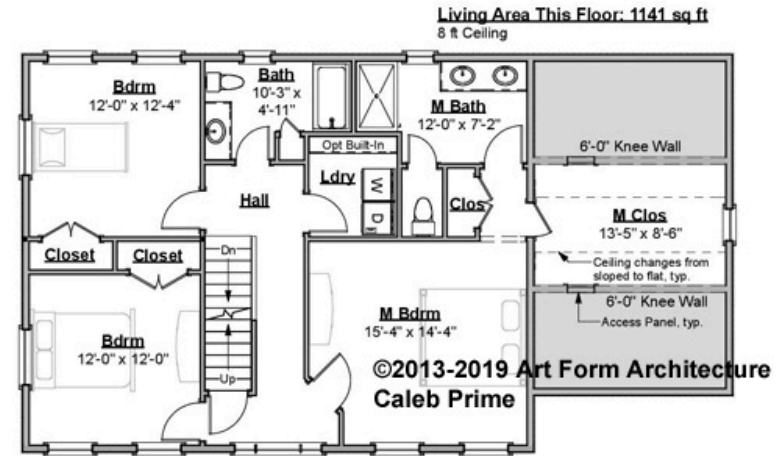
F1 LIVING AREA	1354 FT	F1 BEDROOMS	1	F1 BATHROOMS	0.5
Main	1354.00 FT	Main	0.00	Main	0.50
Future	0.00 FT	Future	1.00	Future	0.00
2 <sup>nd</sup> Unit	0.00 FT	2 <sup>nd</sup> Unit	0.00	2 <sup>nd</sup> Unit	0.00



# CALEB PRIME EXPANDED - 2<sup>ND</sup> FLOOR

591.122.v5 GR

Some features shown are optional. Your Purchase & Sale Agreement governs, whether items are labeled "optional" in this document or not.



CLG HT SHOWN 8'-0"      CLG HT POSSIBLE 8'-0"

\* Major Change Fee, see website plan page for cost

F1 LIVING AREA	1141 <sup>FT</sup>	F1 BEDROOMS	3	F1 BATHROOMS	2
Main	1141.00 <sup>FT</sup>	Main	3.00	Main	2.00
Future	0.00 <sup>FT</sup>	Future	0.00	Future	0.00
2 <sup>nd</sup> Unit	0.00 <sup>FT</sup>	2 <sup>nd</sup> Unit	0.00	2 <sup>nd</sup> Unit	0.00

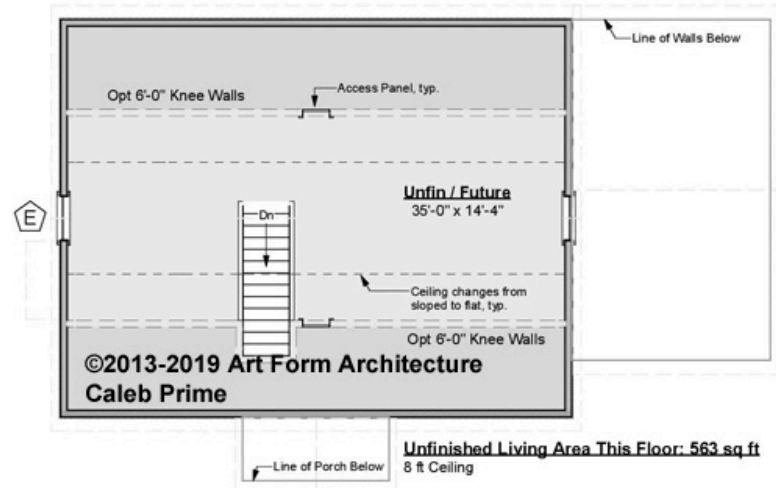


# CALEB PRIME EXPANDED - 3<sup>RD</sup> FLOOR

## 591.122.v5 GR

Some features shown are optional. Your Purchase & Sale Agreement governs, whether items are labeled "optional" in this document or not.

- One or more windows this floor will be low in wall to meet egress:
  - Sill <24" from finished floor requires window guard
  - Sill <18" from finished floor requires tempering.



**CLG HT SHOWN 8'-0"      CLG HT POSSIBLE 9'-0"**

*\* Major Change Fee, see website plan page for cost*

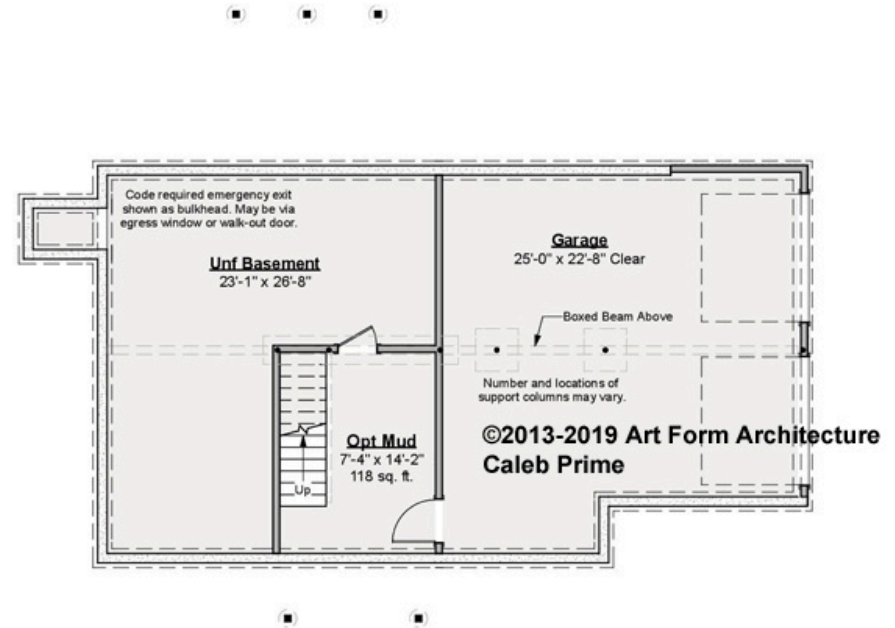
F1 LIVING AREA		F1 BEDROOMS		F1 BATHROOMS	
	583 <sup>FT</sup>		2		0
Main	0.00 <sup>FT</sup>	Main	0.00	Main	0.00
Future	583.00 <sup>FT</sup>	Future	2.00	Future	
2 <sup>nd</sup> Unit	0.00 <sup>FT</sup>	2 <sup>nd</sup> Unit	0.00	2 <sup>nd</sup> Unit	0.00



# CALEB PRIME EXPANDED - BASEMENT

591.122.v5 GR

Some features shown are optional. Your Purchase & Sale Agreement governs, whether items are labeled "optional" in this document or not.



**CLG HT SHOWN 7'-8"      CLG HT POSSIBLE 9'-0"**

*\* Major Change Fee, see website plan page for cost*

F1 LIVING AREA		F1 BEDROOMS		F1 BATHROOMS	
	0 FT		0		0
Main	0.00 FT	Main	0.00	Main	0.00
Future	0.00 FT	Future	0.00	Future	0.00
2 <sup>nd</sup> Unit	0.00 FT	2 <sup>nd</sup> Unit	0.00	2 <sup>nd</sup> Unit	0.00

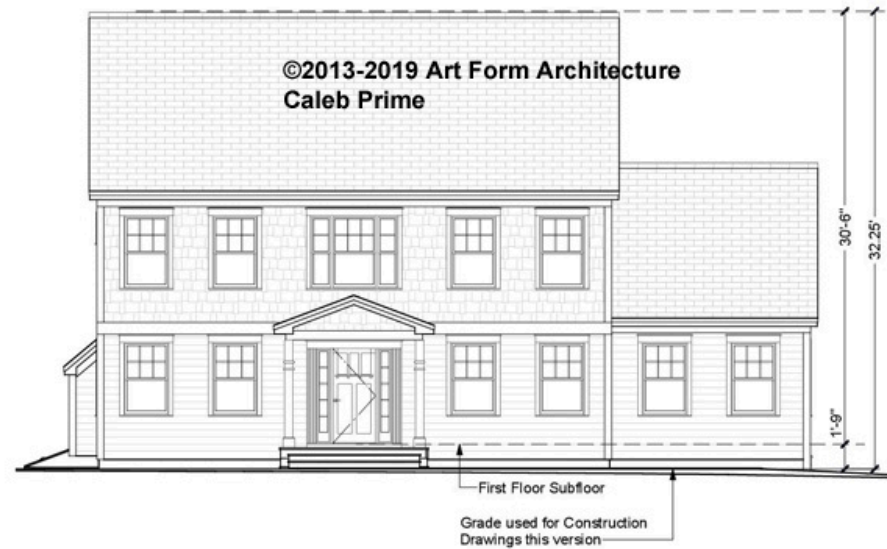


Art Form Architecture, LLC

## CALEB PRIME EXPANDED - FRONT ELEVATION

591.122.v5 GR

Some features shown are optional. Your Purchase & Sale Agreement governs, whether items are labeled "optional" in this document or not.





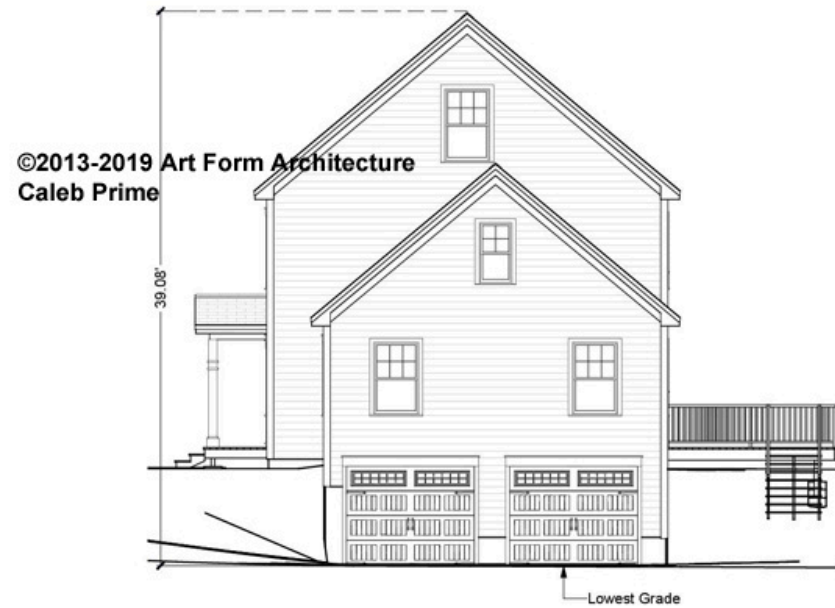


Art Form Architecture, LLC

## CALEB PRIME EXPANDED - RIGHT ELEVATION

591.122.v5 GR

—  
Some features shown are optional. Your Purchase & Sale Agreement governs, whether items are labeled "optional" in this document or not.



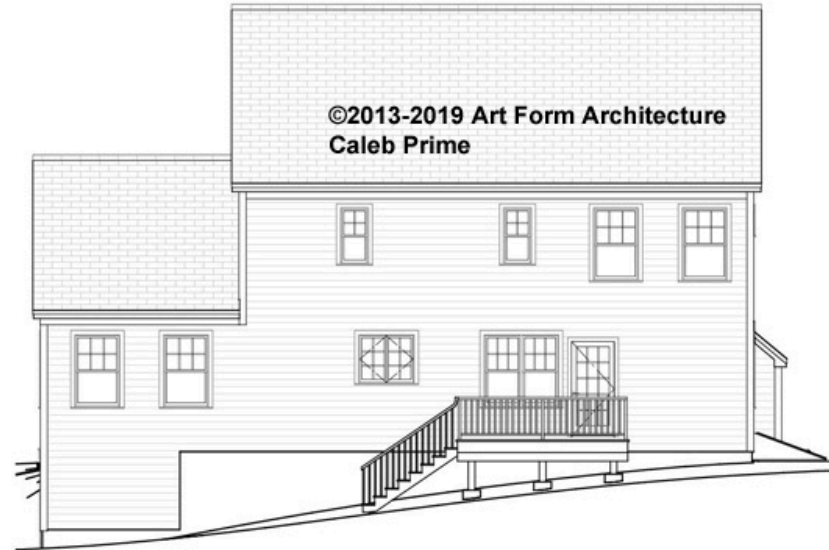


Art Form Architecture, LLC

## CALEB PRIME EXPANDED - REAR ELEVATION

591.122.v5 GR

—  
Some features shown are optional. Your Purchase & Sale Agreement governs, whether items are labeled "optional" in this document or not.







## CALEB PRIME EXPANDED - LEFT ELEVATION

591.122.v5 GR

Some features shown are optional. Your Purchase & Sale Agreement governs, whether items are labeled "optional" in this document or not.

