



# BUTTERNUT

## 433.120.v1 KR

In addition to our Terms and Conditions (the "Terms"), please be aware of the following:

Art Form Architecture, LLC ("Artform") requires that our Drawings be built substantially as designed. Artform will not be obligated by or liable for use of this design with markups as part of any builder agreement. While we attempt to accommodate where possible and reasonable, and where the changes do not denigrate our design, any and all changes to Drawings must be approved in writing by Artform. It is recommended that you have your Drawing updated by Artform prior to attaching any Drawing to any builder agreement. Artform shall not be responsible for the misuse of or unauthorized alterations to any of its Drawings.



Width 34.00 FT

Depth 30.00 FT

Height 30.92 FT

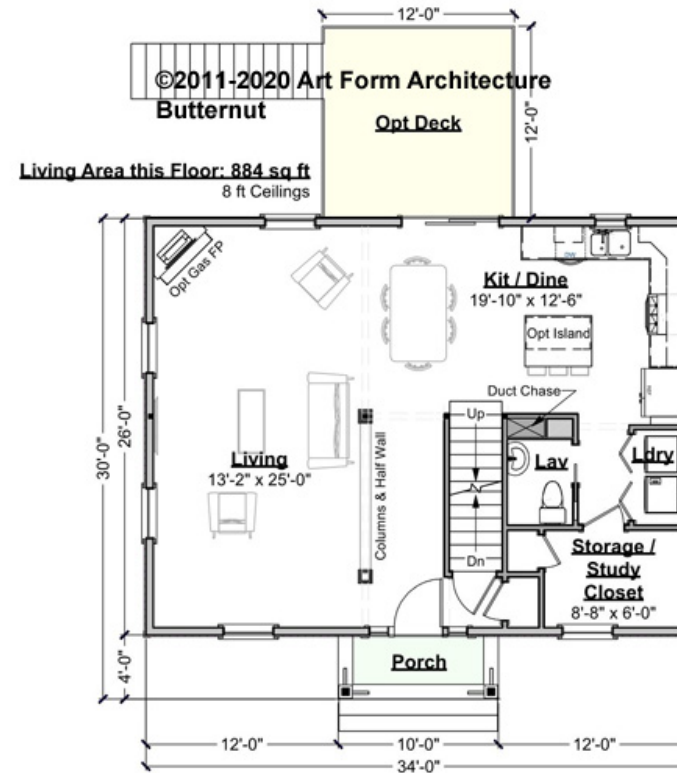
| LIVING AREA          |         | BEDROOMS             |   | BATHROOMS            |     |
|----------------------|---------|----------------------|---|----------------------|-----|
|                      | 1785 FT |                      | 3 |                      | 2.5 |
| Main                 | 1785 FT | Main                 | 3 | Main                 | 2.5 |
| Future               | 0 FT    | Future               | 0 | Future               | 0   |
| 2 <sup>nd</sup> Unit | 0 FT    | 2 <sup>nd</sup> Unit | 0 | 2 <sup>nd</sup> Unit | 0   |



# BUTTERNUT - 1<sup>ST</sup> FLOOR

## 433.120.v1 KR

Some features shown are optional. Your Purchase & Sale Agreement governs, whether items are labeled "optional" in this document or not.



WEB 433.120.v1 KR Butternut

CLG HT SHOWN 8'-0"    CLG HT POSSIBLE 9'-0"

\* Major Change Fee, see website plan page for cost

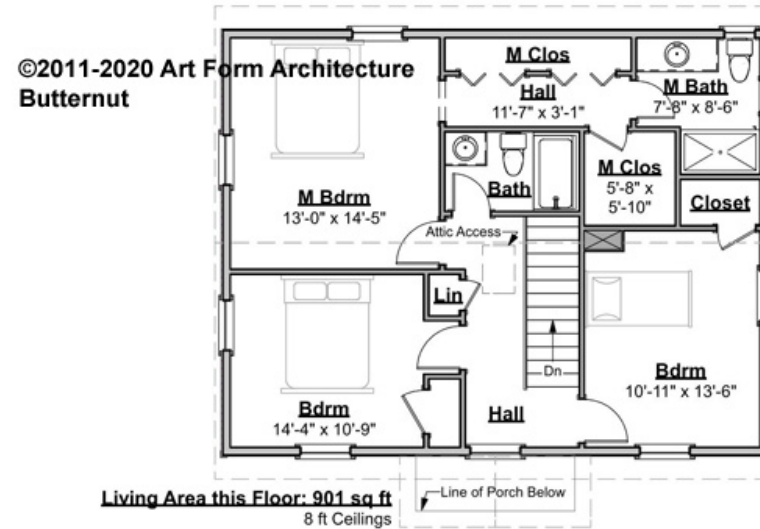
| F1 LIVING AREA       |                      | F1 BEDROOMS          |      | F1 BATHROOMS         |      |
|----------------------|----------------------|----------------------|------|----------------------|------|
|                      | 884 <sup>FT</sup>    |                      | 0    |                      | 0.5  |
| Main                 | 884.00 <sup>FT</sup> | Main                 | 0.00 | Main                 | 0.50 |
| Future               | 0.00 <sup>FT</sup>   | Future               | 0.00 | Future               | 0.00 |
| 2 <sup>nd</sup> Unit | 0.00 <sup>FT</sup>   | 2 <sup>nd</sup> Unit | 0.00 | 2 <sup>nd</sup> Unit | 0.00 |



# BUTTERNUT - 2<sup>ND</sup> FLOOR

## 433.120.v1 KR

Some features shown are optional. Your Purchase & Sale Agreement governs, whether items are labeled "optional" in this document or not.



WEB 433.120.v1 KR Butternut

**CLG HT SHOWN 8'-0"    CLG HT POSSIBLE 8'-0"**

*\* Major Change Fee, see website plan page for cost*

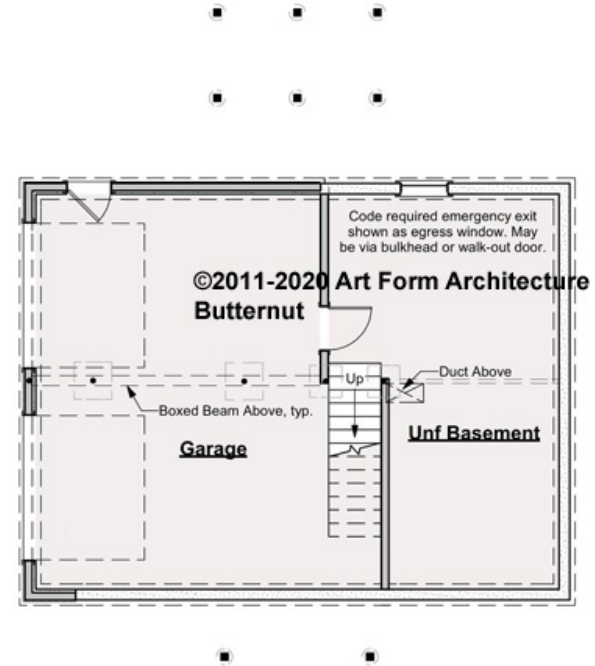
| F1 LIVING AREA       |                      | F1 BEDROOMS          |      | F1 BATHROOMS         |      |
|----------------------|----------------------|----------------------|------|----------------------|------|
|                      | 901 <sup>FT</sup>    |                      | 3    |                      | 2    |
| Main                 | 901.00 <sup>FT</sup> | Main                 | 3.00 | Main                 | 2.00 |
| Future               | 0.00 <sup>FT</sup>   | Future               | 0.00 | Future               | 0.00 |
| 2 <sup>nd</sup> Unit | 0.00 <sup>FT</sup>   | 2 <sup>nd</sup> Unit | 0.00 | 2 <sup>nd</sup> Unit | 0.00 |



# BUTTERNUT - BASEMENT

433.120.v1 KR

Some features shown are optional. Your Purchase & Sale Agreement governs, whether items are labeled "optional" in this document or not.



WEB 433.120.v1 KR Butternut

CLG HT SHOWN 7'-8"      CLG HT POSSIBLE 7'-8"

\* Major Change Fee, see website plan page for cost

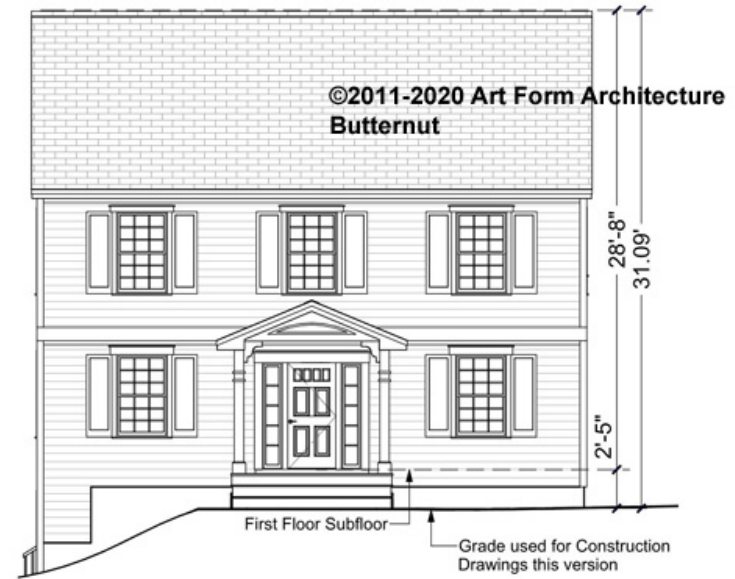
| F1 LIVING AREA       |         | F1 BEDROOMS          |      | F1 BATHROOMS         |      |
|----------------------|---------|----------------------|------|----------------------|------|
|                      | 0 FT    |                      | 0    |                      | 0    |
| Main                 | 0.00 FT | Main                 | 0.00 | Main                 | 0.00 |
| Future               | 0.00 FT | Future               | 0.00 | Future               | 0.00 |
| 2 <sup>nd</sup> Unit | 0.00 FT | 2 <sup>nd</sup> Unit | 0.00 | 2 <sup>nd</sup> Unit | 0.00 |



## BUTTERNUT - FRONT ELEVATION

433.120.v1 KR

Some features shown are optional. Your Purchase & Sale Agreement governs, whether items are labeled "optional" in this document or not.



WEB 433.120.v1 KR Butternut



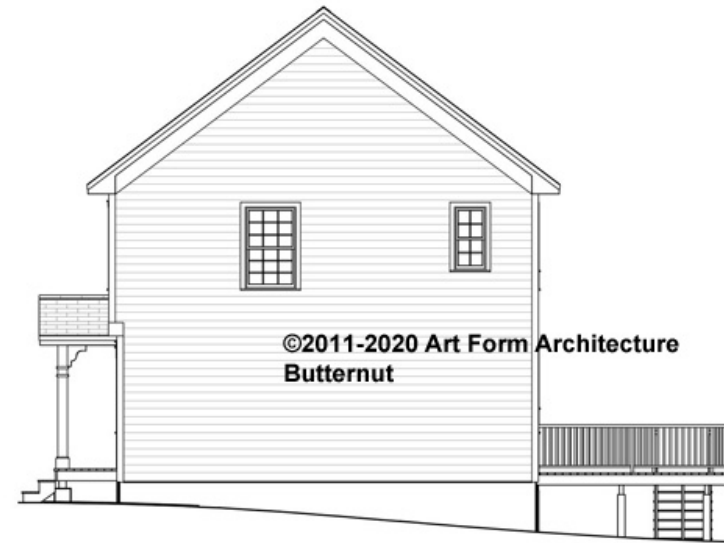
Art Form Architecture, LLC

## BUTTERNUT - RIGHT ELEVATION

433.120.v1 KR

—

Some features shown are optional. Your Purchase & Sale Agreement governs, whether items are labeled "optional" in this document or not.



WEB 433.120.v1 KR Butternut

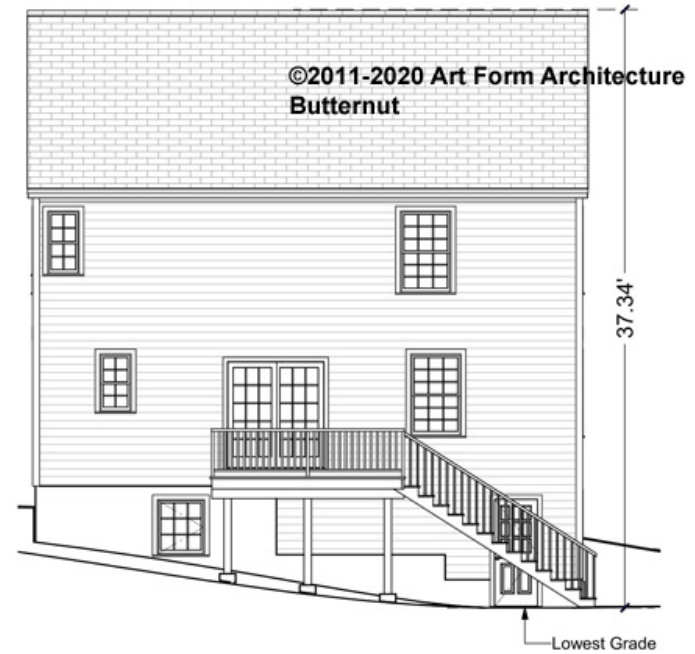


## BUTTERNUT - REAR ELEVATION

433.120.v1 KR

—

Some features shown are optional. Your Purchase & Sale Agreement governs, whether items are labeled "optional" in this document or not.



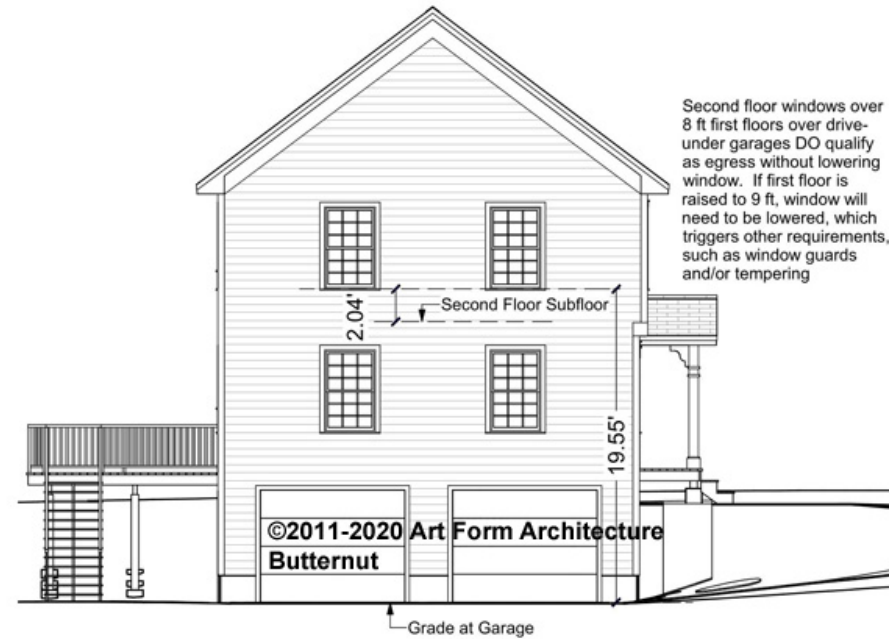
WEB 433.120.v1 KR Butternut



## BUTTERNUT - LEFT ELEVATION

433.120.v1 KR

Some features shown are optional. Your Purchase & Sale Agreement governs, whether items are labeled "optional" in this document or not.



WEB 433.120.v1 KR Butternut