



## BRICKLE CLASSIC

578.124.v10 ER

In addition to our Terms and Conditions (the "Terms"), please be aware of the following:

Art Form Architecture, LLC ("Artform") requires that our Drawings be built substantially as designed. Artform will not be obligated by or liable for use of this design with markups as part of any builder agreement. While we attempt to accommodate where possible and reasonable, and where the changes do not denigrate our design, any and all changes to Drawings must be approved in writing by Artform. It is recommended that you have your Drawing updated by Artform prior to attaching any Drawing to any builder agreement. Artform shall not be responsible for the misuse of or unauthorized alterations to any of its Drawings.



Width 64.00 FT

Depth 38.33 FT

Height 33.83 FT

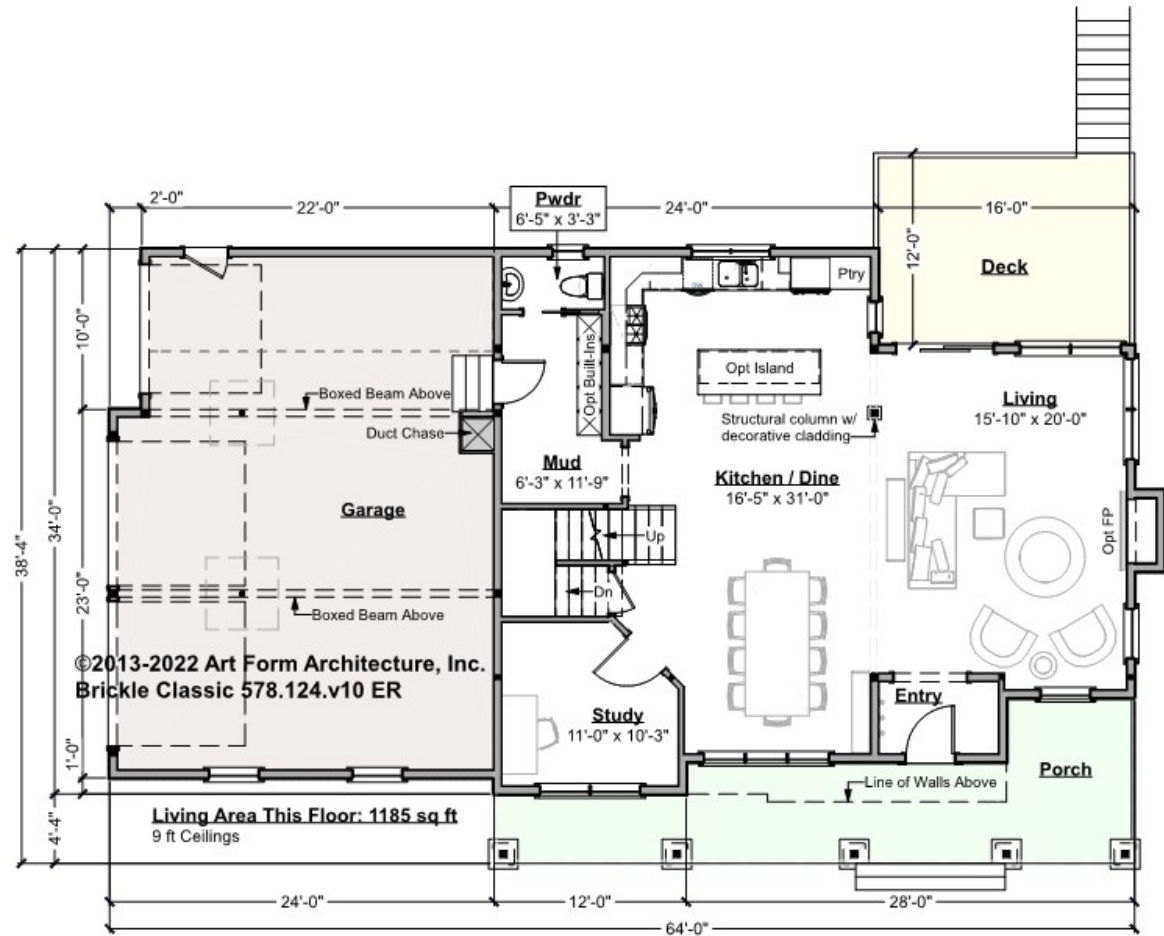
LIVING AREA		BEDROOMS		BATHROOMS	
	2819 FT <sup>2</sup>		5		3
Main	2819 FT <sup>2</sup>	Main	4	Main	2.5
Future	0 FT <sup>2</sup>	Future	1	Future	0.5
2 <sup>nd</sup> Unit	0 FT <sup>2</sup>	2 <sup>nd</sup> Unit	0	2 <sup>nd</sup> Unit	0



# BRICKLE CLASSIC - 1<sup>ST</sup> FLOOR

## 578.124.v10 ER

Some features shown are optional. Your Purchase & Sale Agreement governs, whether items are labeled "optional" in this document or not.



CLG HT SHOWN 9'-0"    CLG HT POSSIBLE 8'-0"

\* Major Change Fee, see website plan page for cost

F1 LIVING AREA	1185 <sup>FT</sup>	F1 BEDROOMS	1	F1 BATHROOMS	0.5
Main	1185.00 <sup>FT</sup>	Main	0.00	Main	0.50
Future	0.00 <sup>FT</sup>	Future	1.00	Future	0.00
2 <sup>nd</sup> Unit	0.00 <sup>FT</sup>	2 <sup>nd</sup> Unit	0.00	2 <sup>nd</sup> Unit	0.00



Art Form Architecture, LLC

## BRICKLE CLASSIC - 1<sup>ST</sup> FLOOR

578.124.v10 ER

Some features shown are optional. Your Purchase & Sale Agreement governs, whether items are labeled "optional" in this document or not.



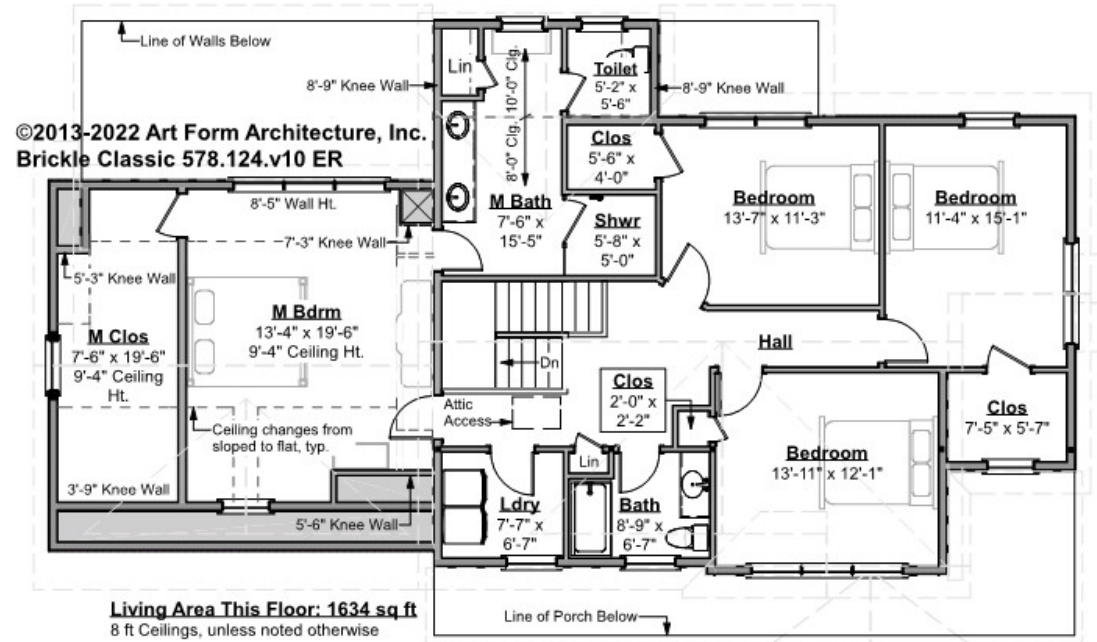
Living & Dining - Additional Image



# BRICKLE CLASSIC - 2<sup>ND</sup> FLOOR

## 578.124.v10 ER

Some features shown are optional. Your Purchase & Sale Agreement governs, whether items are labeled "optional" in this document or not.



CLG HT SHOWN 8'-0"      CLG HT POSSIBLE 8'-0"

\* Major Change Fee, see website plan page for cost

F1 LIVING AREA	1634 FT	F1 BEDROOMS	4	F1 BATHROOMS	2
Main	1634.00 FT	Main	4.00	Main	2.00
Future	0.00 FT	Future	0.00	Future	0.00
2 <sup>nd</sup> Unit	0.00 FT	2 <sup>nd</sup> Unit	0.00	2 <sup>nd</sup> Unit	0.00

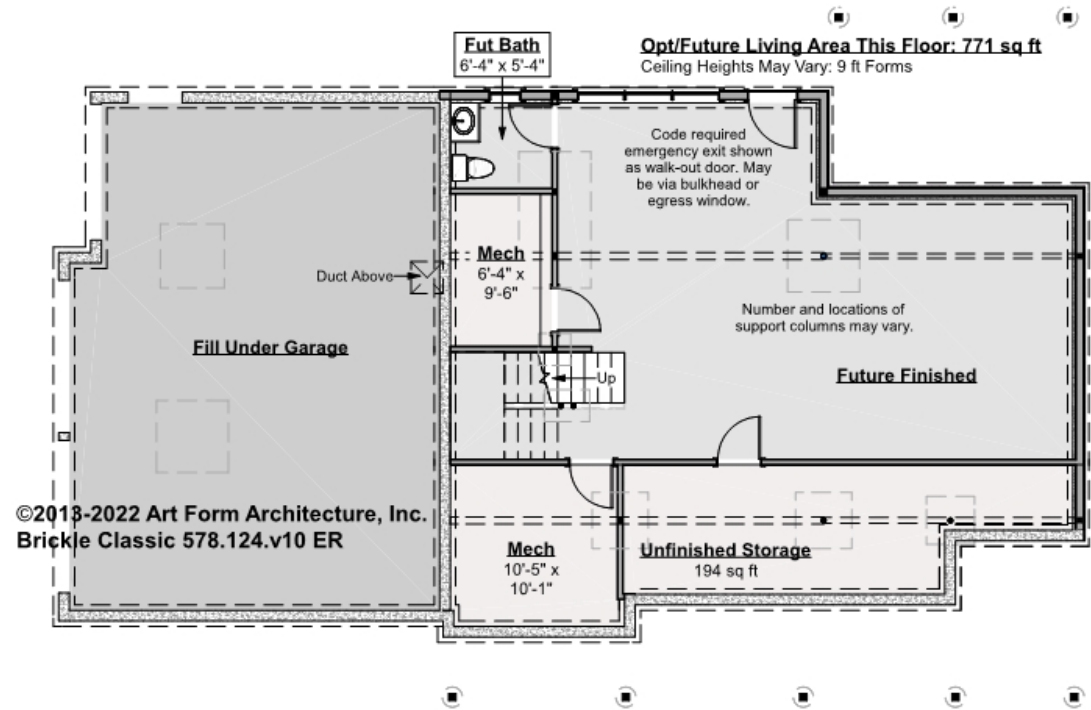


# BRICKLE CLASSIC - BASEMENT

## 578.124.v10 ER

Note: finished basement area is NOT included in main or future Living Area, but IS shown on CDs. We do this so Search doesn't mislead.

Some features shown are optional. Your Purchase & Sale Agreement governs, whether items are labeled "optional" in this document or not.



CLG HT SHOWN 9'-0"      CLG HT POSSIBLE 7'-8"

\* Major Change Fee, see website plan page for cost

F1 LIVING AREA		F1 BEDROOMS		F1 BATHROOMS	
	0 FT		0		0.5
Main	0.00 FT	Main	0.00	Main	0.00
Future	0.00 FT	Future	0.00	Future	0.50
2 <sup>nd</sup> Unit	0.00 FT	2 <sup>nd</sup> Unit	0.00	2 <sup>nd</sup> Unit	0.00



## BRICKLE CLASSIC - FRONT ELEVATION

578.124.v10 ER

Some features shown are optional. Your Purchase & Sale Agreement governs, whether items are labeled "optional" in this document or not.





Art Form Architecture, LLC

## BRICKLE CLASSIC - RIGHT ELEVATION

578.124.v10 ER

—  
Some features shown are optional. Your Purchase & Sale Agreement governs, whether items are labeled "optional" in this document or not.

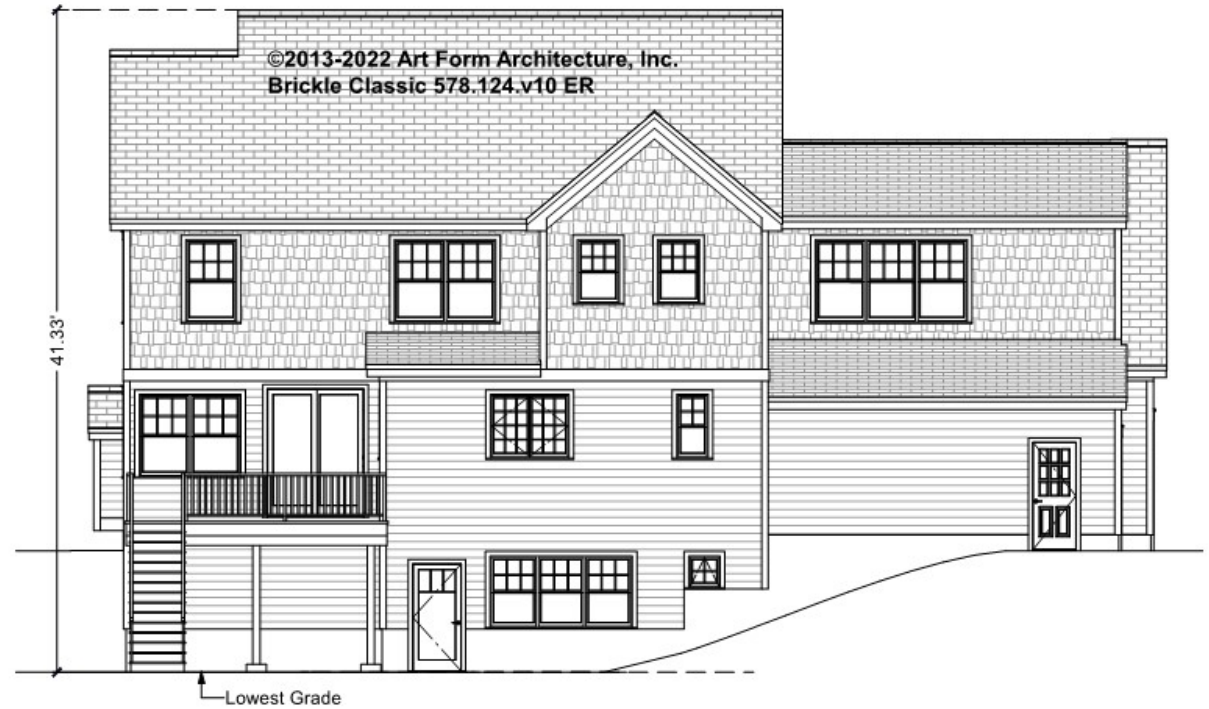




Art Form Architecture, LLC

## BRICKLE CLASSIC - REAR ELEVATION 578.124.v10 ER

Some features shown are optional. Your Purchase & Sale Agreement governs, whether items are labeled "optional" in this document or not.







Art Form Architecture, LLC

## BRICKLE CLASSIC - LEFT ELEVATION 578.124.v10 ER

Some features shown are optional. Your Purchase & Sale Agreement governs, whether items are labeled "optional" in this document or not.





Art Form Architecture, LLC

## BRICKLE CLASSIC - REAR RENDER 578.124.v10 ER

Some features shown are optional. Your Purchase & Sale Agreement governs, whether items are labeled "optional" in this document or not.

