



# BRANDYWINE CLASSIC WITH WING

## 260.127.v16 GL

Reverse plan available.

In addition to our Terms and Conditions (the "Terms"), please be aware of the following:

Art Form Architecture, LLC ("Artform") requires that our Drawings be built substantially as designed. Artform will not be obligated by or liable for use of this design with markups as part of any builder agreement. While we attempt to accommodate where possible and reasonable, and where the changes do not denigrate our design, any and all changes to Drawings must be approved in writing by Artform. It is recommended that you have your Drawing updated by Artform prior to attaching any Drawing to any builder agreement. Artform shall not be responsible for the misuse of or unauthorized alterations to any of its Drawings.



©2010 Art Form Architecture, LLC  
Brandywine Classic with Wing 260.127.v16 GL

Width 68.00 FT

Depth 36.00 FT

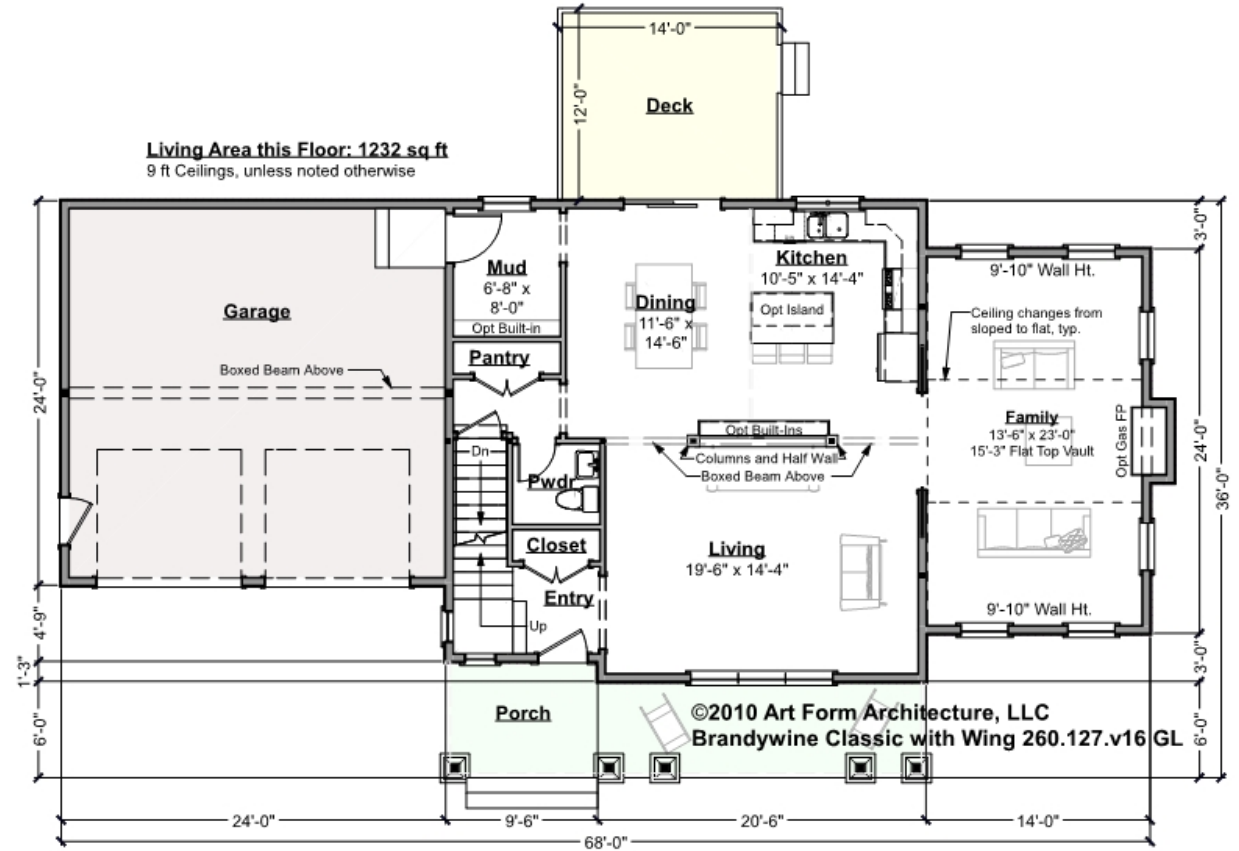
Height 29.42 FT

LIVING AREA		BEDROOMS		BATHROOMS	
	2591 FT <sup>2</sup>		5		2.5
Main	2591 FT <sup>2</sup>	Main	4	Main	2.5
Future	0 FT <sup>2</sup>	Future	1	Future	0
2 <sup>nd</sup> Unit	0 FT <sup>2</sup>	2 <sup>nd</sup> Unit	0	2 <sup>nd</sup> Unit	0



**BRANDYWINE CLASSIC WITH WING -**  
**1<sup>ST</sup> FLOOR**  
**260.127.v16 GL**

Some features shown are optional. Your Purchase & Sale Agreement governs, whether items are labeled "optional" in this document or not.



**CLG HT SHOWN 9'-0"**      **CLG HT POSSIBLE 8'-0"**

*\* Major Change Fee, see website plan page for cost*

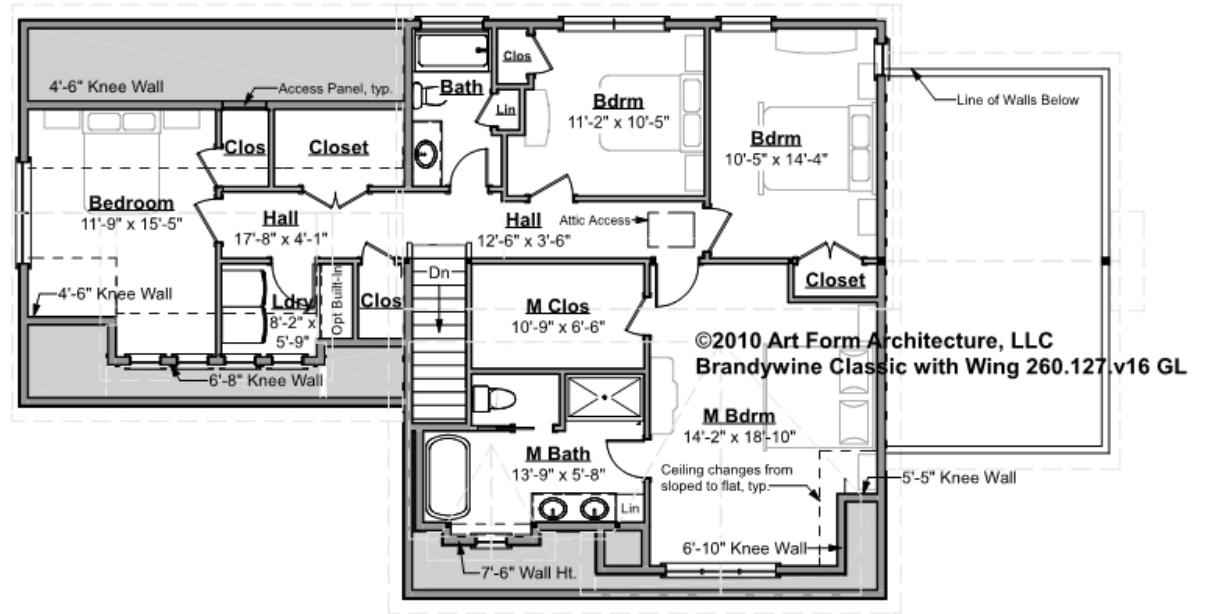
F1 LIVING AREA	1232 FT	F1 BEDROOMS	1	F1 BATHROOMS	0.5
Main	1232.00 FT	Main		Main	0.50
Future	FT	Future	1.00	Future	
2 <sup>nd</sup> Unit	FT	2 <sup>nd</sup> Unit		2 <sup>nd</sup> Unit	



**BRANDYWINE CLASSIC WITH WING -  
2<sup>ND</sup> FLOOR  
260.127.v16 GL**

Some features shown are optional. Your Purchase & Sale Agreement governs, whether items are labeled "optional" in this document or not.

Living Area this Floor: 1359 sq ft  
8 ft Ceilings



CLG HT SHOWN 8'-0"

CLG HT POSSIBLE 9'-0"

\* Major Change Fee, see website plan page for cost

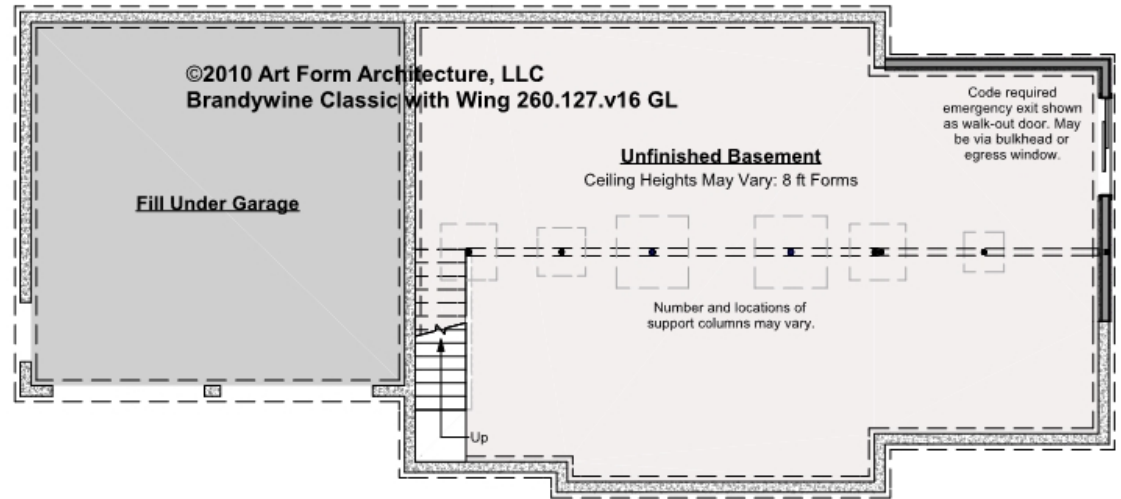
F1 LIVING AREA	1359 FT	F1 BEDROOMS	4	F1 BATHROOMS	2
Main	1359.00 FT	Main	4.00	Main	2.00
Future	FT	Future		Future	
2 <sup>nd</sup> Unit	FT	2 <sup>nd</sup> Unit		2 <sup>nd</sup> Unit	



# BRANDYWINE CLASSIC WITH WING - BASEMENT

## 260.127.v16 GL

Some features shown are optional. Your Purchase & Sale Agreement governs, whether items are labeled "optional" in this document or not.



**CLG HT SHOWN 7'-8"      CLG HT POSSIBLE 10' & Up**

*\* Major Change Fee, see website plan page for cost*

F1 LIVING AREA		F1 BEDROOMS		F1 BATHROOMS	
	0 FT		0		0
Main	0.00 FT	Main	0.00	Main	0.00
Future	FT	Future	0.00	Future	
2 <sup>nd</sup> Unit	FT	2 <sup>nd</sup> Unit		2 <sup>nd</sup> Unit	



Art Form Architecture, LLC

## BRANDYWINE CLASSIC WITH WING - FRONT ELEVATION

260.127.v16 GL

Some features shown are optional. Your Purchase & Sale Agreement governs, whether items are labeled "optional" in this document or not.





Art Form Architecture, LLC

## BRANDYWINE CLASSIC WITH WING - RIGHT ELEVATION

260.127.v16 GL

—  
Some features shown are optional. Your Purchase & Sale Agreement governs, whether items are labeled "optional" in this document or not.

©2010 Art Form Architecture, LLC  
Brandywine Classic with Wing 260.127.v16 GL





Art Form Architecture, LLC

## BRANDYWINE CLASSIC WITH WING - REAR ELEVATION

260.127.v16 GL

Some features shown are optional. Your Purchase & Sale Agreement governs, whether items are labeled "optional" in this document or not.







Art Form Architecture, LLC

## BRANDYWINE CLASSIC WITH WING - LEFT ELEVATION

260.127.v16 GL

—  
Some features shown are optional. Your Purchase & Sale Agreement governs, whether items are labeled "optional" in this document or not.

©2010 Art Form Architecture, LLC  
Brandywine Classic with Wing 260.127.v16 GL







Art Form Architecture, LLC

## **BRANDYWINE CLASSIC WITH WING - REAR RENDER**

**260.127.v16 GL**

—

Some features shown are optional. Your Purchase & Sale Agreement governs, whether items are labeled "optional" in this document or not.

