



BRAEMAR

885.124.v8 GR

In addition to our Terms and Conditions (the "Terms"), please be aware of the following:

Art Form Architecture, LLC ("Artform") requires that our Drawings be built substantially as designed. Artform will not be obligated by or liable for use of this design with markups as part of any builder agreement. While we attempt to accommodate where possible and reasonable, and where the changes do not denigrate our design, any and all changes to Drawings must be approved in writing by Artform. It is recommended that you have your Drawing updated by Artform prior to attaching any Drawing to any builder agreement. Artform shall not be responsible for the misuse of or unauthorized alterations to any of its Drawings.



Width 40.00 FT

Depth 63.00 FT

Height 26.25 FT

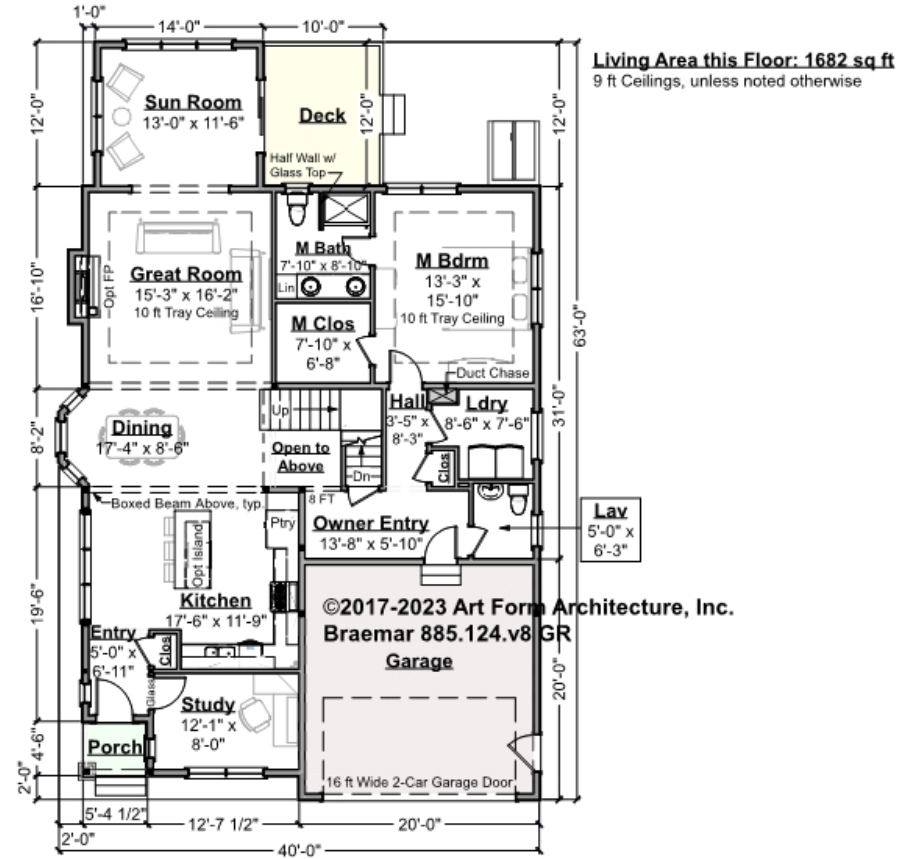
| LIVING AREA | | BEDROOMS | | BATHROOMS | |
|----------------------|---------|----------------------|---|----------------------|-----|
| | 2463 FT | | 4 | | 2.5 |
| Main | 2463 FT | Main | 3 | Main | 2.5 |
| Future | 0 FT | Future | 1 | Future | 0 |
| 2 nd Unit | 0 FT | 2 nd Unit | 0 | 2 nd Unit | 0 |



BRAEMAR - 1ST FLOOR

885.124.v8 GR

Some features shown are optional. Your Purchase & Sale Agreement governs, whether items are labeled "optional" in this document or not.



CLG HT SHOWN 9'-0" CLG HT POSSIBLE 8'-0"

* Major Change Fee, see website plan page for cost

| F1 LIVING AREA | 1682 FT | F1 BEDROOMS | 2 | F1 BATHROOMS | 1.5 |
|----------------------|------------|----------------------|------|----------------------|------|
| Main | 1682.00 FT | Main | 1.00 | Main | 1.50 |
| Future | FT | Future | 1.00 | Future | |
| 2 nd Unit | FT | 2 nd Unit | | 2 nd Unit | |



BRAEMAR - 2ND FLOOR

885.124.v8 GR

Some features shown are optional. Your Purchase & Sale Agreement governs, whether items are labeled "optional" in this document or not.



CLG HT SHOWN 8'-0" CLG HT POSSIBLE 9'-0"

* Major Change Fee, see website plan page for cost

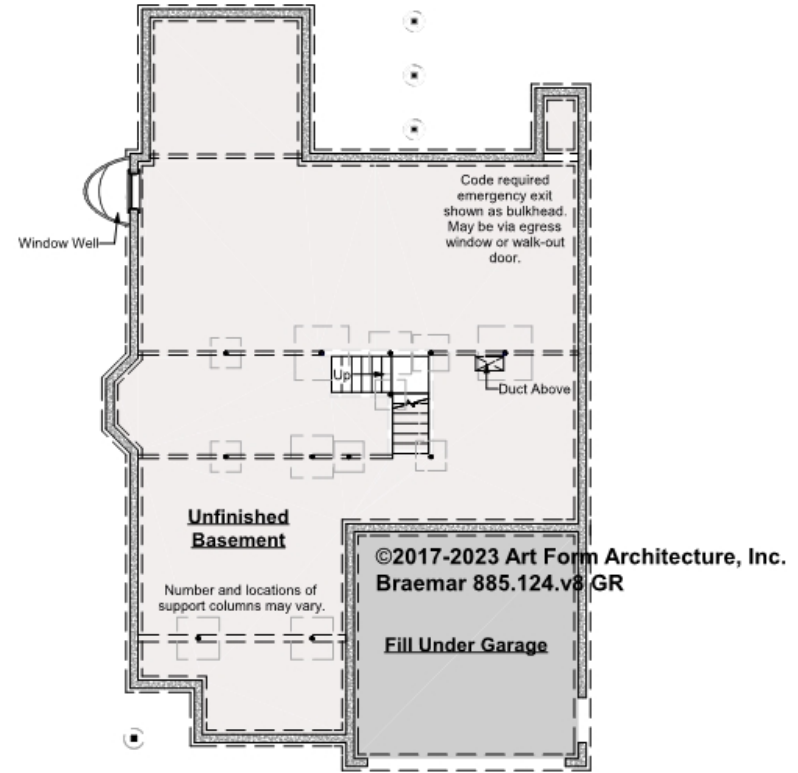
| F1 LIVING AREA | 781 FT | F1 BEDROOMS | 2 | F1 BATHROOMS | 1 |
|----------------------|-----------|----------------------|------|----------------------|------|
| Main | 781.00 FT | Main | 2.00 | Main | 1.00 |
| Future | FT | Future | | Future | |
| 2 nd Unit | FT | 2 nd Unit | | 2 nd Unit | |



BRAEMAR - BASEMENT

885.124.v8 GR

Some features shown are optional. Your Purchase & Sale Agreement governs, whether items are labeled "optional" in this document or not.



CLG HT SHOWN 7'-8" CLG HT POSSIBLE 9'-0"

** Major Change Fee, see website plan page for cost*

| F1 LIVING AREA | | 0 ^{FT} | F1 BEDROOMS | | 0 | F1 BATHROOMS | | 0 |
|----------------------|----|-----------------|----------------------|--|---|----------------------|--|---|
| Main | FT | | Main | | | Main | | |
| Future | FT | | Future | | | Future | | |
| 2 nd Unit | FT | | 2 nd Unit | | | 2 nd Unit | | |



Art Form Architecture, LLC

BRAEMAR - FRONT ELEVATION

885.124.v8 GR

Some features shown are optional. Your Purchase & Sale Agreement governs, whether items are labeled "optional" in this document or not.



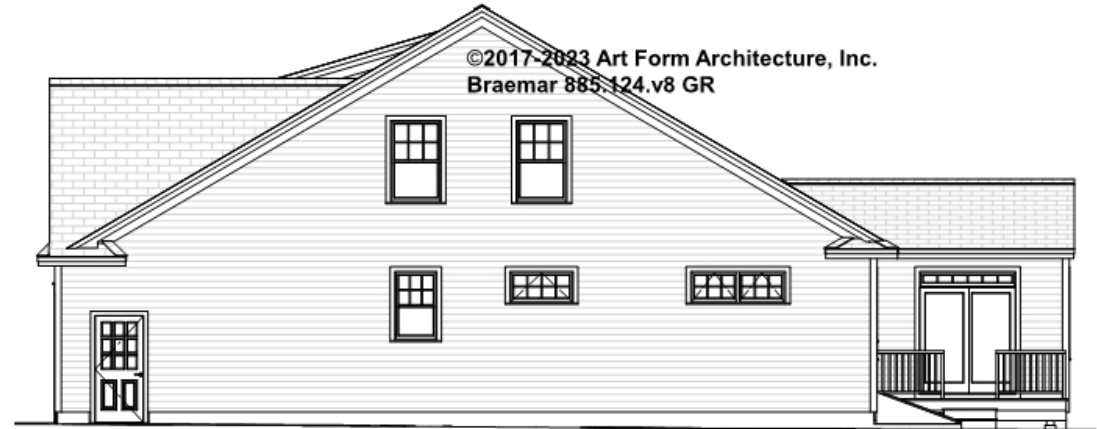


Art Form Architecture, LLC

BRAEMAR - RIGHT ELEVATION

885.124.v8 GR

Some features shown are optional. Your Purchase & Sale Agreement governs, whether items are labeled "optional" in this document or not.



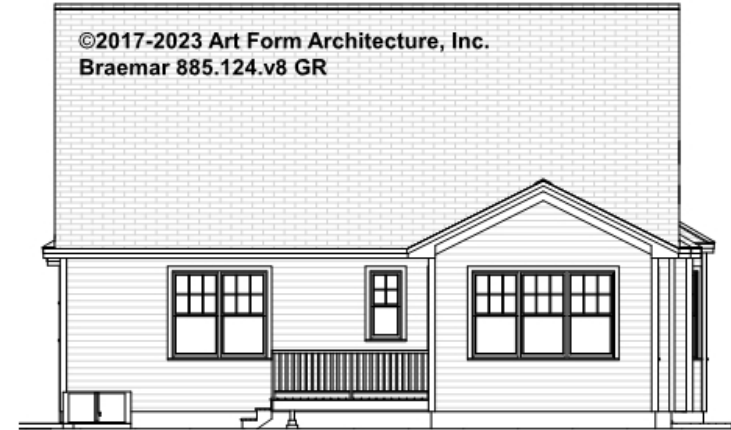


Art Form Architecture, LLC

BRAEMAR - REAR ELEVATION

885.124.v8 GR

Some features shown are optional. Your Purchase & Sale Agreement governs, whether items are labeled "optional" in this document or not.





Art Form Architecture, LLC

BRAEMAR - LEFT ELEVATION

885.124.v8 GR

Some features shown are optional. Your Purchase & Sale Agreement governs, whether items are labeled "optional" in this document or not.





Art Form Architecture, LLC

BRAEMAR - REAR RENDER

885.124.v8 GR

Some features shown are optional. Your Purchase & Sale Agreement governs, whether items are labeled "optional" in this document or not.

