



# BOYSENBERRY BISCOTTI CAPE

## 702.144.v61 GR

Part of the **Bakery Series Collection**.

In addition to our Terms and Conditions (the "Terms"), please be aware of the following:

Art Form Architecture, LLC ("Artform") requires that our Drawings be built substantially as designed. Artform will not be obligated by or liable for use of this design with markups as part of any builder agreement. While we attempt to accommodate where possible and reasonable, and where the changes do not denigrate our design, any and all changes to Drawings must be approved in writing by Artform. It is recommended that you have your Drawing updated by Artform prior to attaching any Drawing to any builder agreement. Artform shall not be responsible for the misuse of or unauthorized alterations to any of its Drawings.



©2014 Art Form Architecture, LLC.  
Boyseberry Biscotti Cape 702.144.v61 GR

Width 45.00 FT

Depth 55.00 FT

Height 24.08 FT

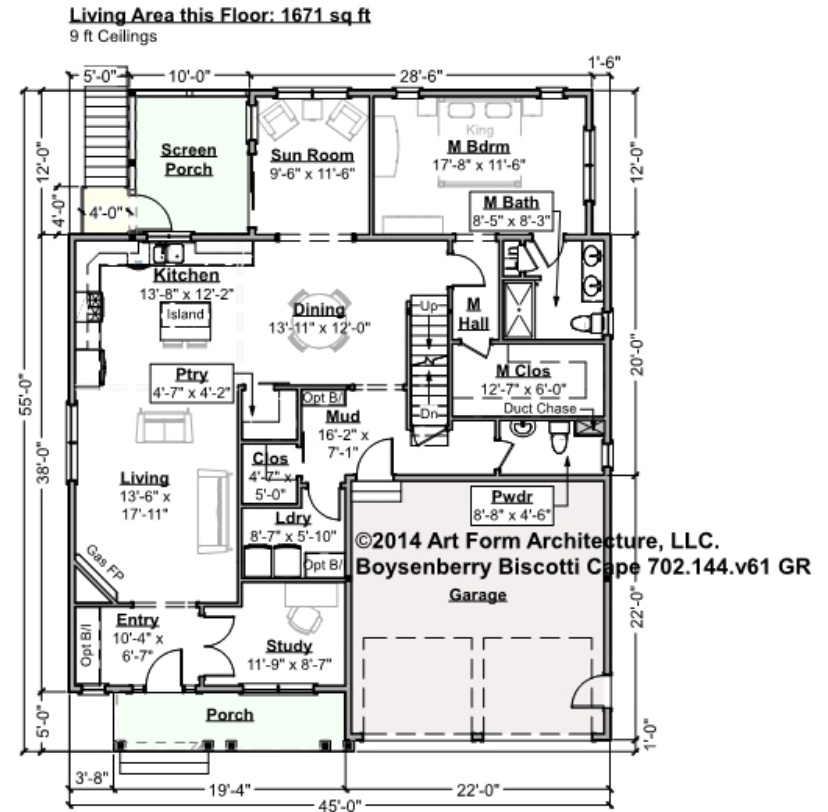
LIVING AREA		BEDROOMS		BATHROOMS	
	1999 FT		3		2.5
Main	1999 FT	Main	2	Main	2.5
Future	0 FT	Future	1	Future	0
2 <sup>nd</sup> Unit	0 FT	2 <sup>nd</sup> Unit	0	2 <sup>nd</sup> Unit	0



# BOYSENBERRY BISCOTTI CAPE - 1<sup>ST</sup> FLOOR

## 702.144.v61 GR

Some features shown are optional. Your Purchase & Sale Agreement governs, whether items are labeled "optional" in this document or not.



CLG HT SHOWN 9'-0"    CLG HT POSSIBLE 8'-0"

\* Major Change Fee, see website plan page for cost

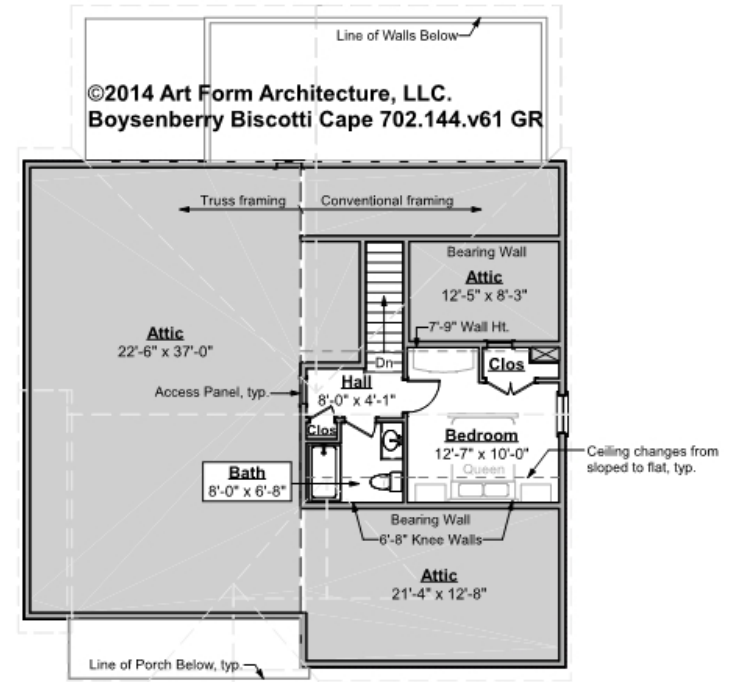
F1 LIVING AREA	1671 FT	F1 BEDROOMS	2	F1 BATHROOMS	1.5
Main	1671.00 FT	Main	1.00	Main	1.50
Future	FT	Future	1.00	Future	
2 <sup>nd</sup> Unit	FT	2 <sup>nd</sup> Unit		2 <sup>nd</sup> Unit	



**BOYSENBERRY BISCOTTI CAPE - 2<sup>ND</sup>  
FLOOR  
702.144.v61 GR**

Some features shown are optional. Your Purchase & Sale Agreement governs, whether items are labeled "optional" in this document or not.

**Living Area this Floor: 328 sq ft**  
8 ft Ceilings



**CLG HT SHOWN 8'-0"      CLG HT POSSIBLE 9'-0"**

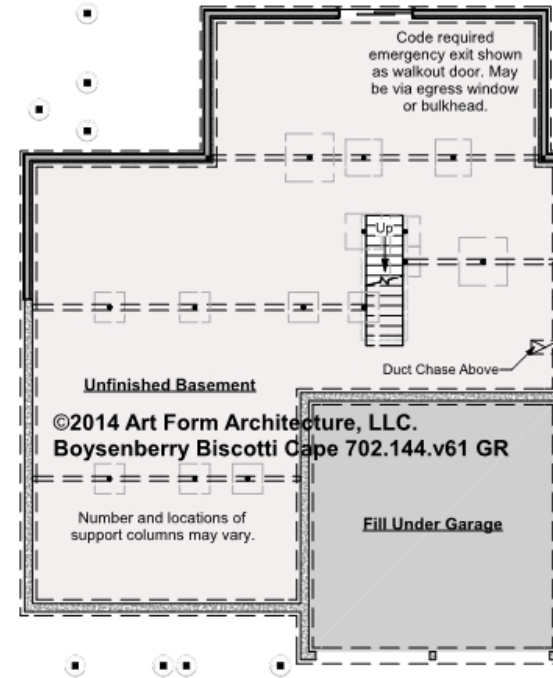
*\* Major Change Fee, see website plan page for cost*

F1 LIVING AREA		F1 BEDROOMS		F1 BATHROOMS	
	328 <sup>FT</sup>		1		1
Main	328.00 <sup>FT</sup>	Main	1.00	Main	1.00
Future	FT	Future		Future	
2 <sup>nd</sup> Unit	FT	2 <sup>nd</sup> Unit		2 <sup>nd</sup> Unit	



# BOYSENBERRY BISCOTTI CAPE - BASEMENT 702.144.v61 GR

Some features shown are optional. Your Purchase & Sale Agreement governs, whether items are labeled "optional" in this document or not.



**CLG HT SHOWN 7'-8"      CLG HT POSSIBLE 10' & Up**

*\* Major Change Fee, see website plan page for cost*

F1 LIVING AREA		0 <sup>FT</sup>	F1 BEDROOMS		0	F1 BATHROOMS		0
Main		FT	Main			Main		
Future		FT	Future			Future		
2 <sup>nd</sup> Unit		FT	2 <sup>nd</sup> Unit			2 <sup>nd</sup> Unit		

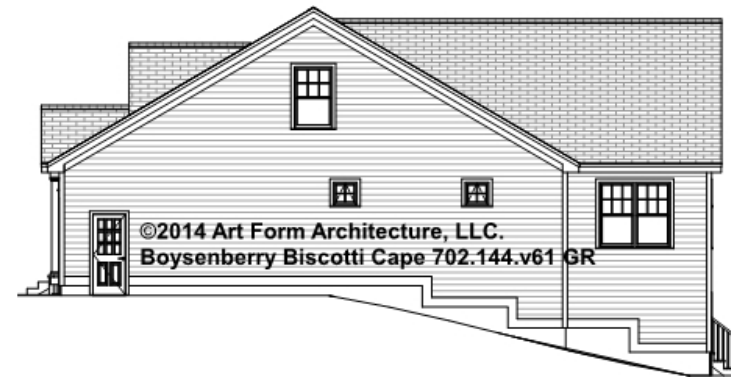
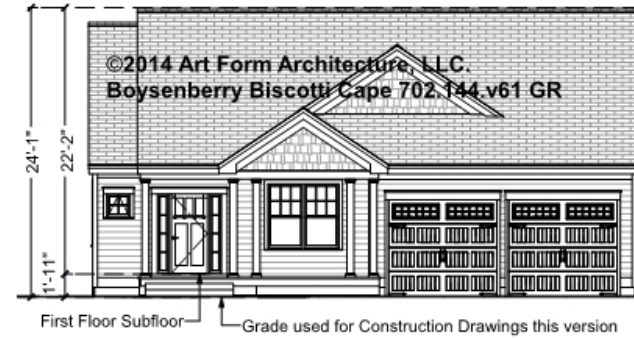


Art Form Architecture, LLC

## BOYSENBERRY BISCOTTI CAPE - FRONT/RIGHT ELEVATION

### 702.144.v61 GR

Some features shown are optional. Your Purchase & Sale Agreement governs, whether items are labeled "optional" in this document or not.

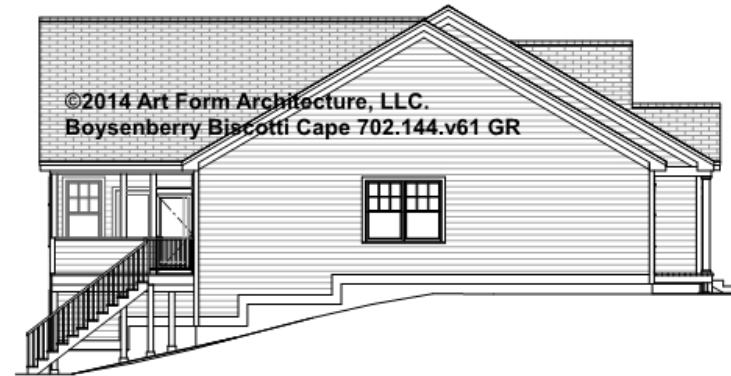




Art Form Architecture, LLC

## BOYSENBERRY BISCOTTI CAPE - REAR/LEFT ELEVATION 702.144.v61 GR

Some features shown are optional. Your Purchase & Sale Agreement governs, whether items are labeled "optional" in this document or not.





Art Form Architecture, LLC

## **BOYSENBERRY BISCOTTI CAPE - REAR RENDER**

**702.144.v61 GR**

—

Some features shown are optional. Your Purchase & Sale Agreement governs, whether items are labeled "optional" in this document or not.

