



## BLISS RANCH

### 718.145.v4 GR

Note - The 68 foot depth listed does NOT include the screen porch. Since it can be removed so easily, we wanted Search to find this plan at the shorter depth. Yes, this is different than the Bliss you may have seen. We retired that one (that was never built) in favor of this one, as we have current Construction Drawings for this one. If you loved the other, call us!

In addition to our Terms and Conditions (the "Terms"), please be aware of the following:

Art Form Architecture, LLC ("Artform") requires that our Drawings be built substantially as designed. Artform will not be obligated by or liable for use of this design with markups as part of any builder agreement. While we attempt to accommodate where possible and reasonable, and where the changes do not denigrate our design, any and all changes to Drawings must be approved in writing by Artform. It is recommended that you have your Drawing updated by Artform prior to attaching any Drawing to any builder agreement. Artform shall not be responsible for the misuse of or unauthorized alterations to any of its Drawings.



Width 74.00 FT

Depth 68.00 FT

Height 24.59 FT

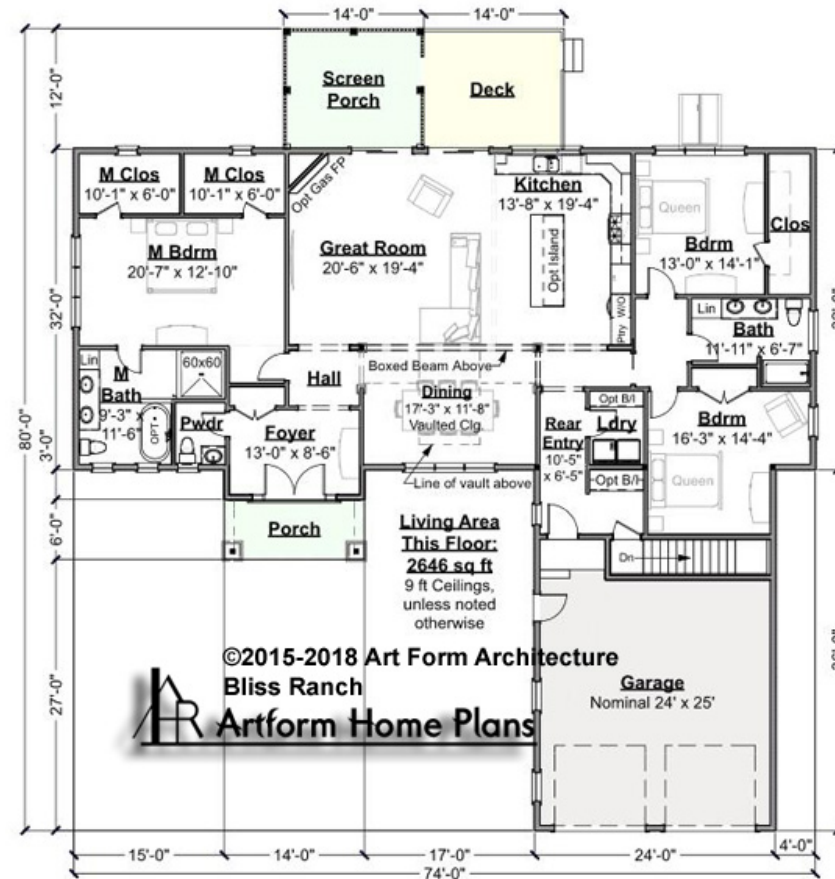
LIVING AREA		BEDROOMS		BATHROOMS	
Main	2646 FT	Main	3	Main	2
Future	0 FT	Future	0	Future	0
2 <sup>nd</sup> Unit	0 FT	2 <sup>nd</sup> Unit	0	2 <sup>nd</sup> Unit	0



# BLISS RANCH - 1<sup>ST</sup> FLOOR

718.145.v4 GR

Some features shown are optional. Your Purchase & Sale Agreement governs, whether items are labeled "optional" in this document or not.



CLG HT SHOWN 9'-0"      CLG HT POSSIBLE 8'-0"

\* Major Change Fee, see website plan page for cost

F1 LIVING AREA	2646 <sup>FT</sup>	F1 BEDROOMS	3	F1 BATHROOMS	2
Main	2646.00 <sup>FT</sup>	Main	3.00	Main	2.00
Future	0.00 <sup>FT</sup>	Future	0.00	Future	0.00
2 <sup>nd</sup> Unit	0.00 <sup>FT</sup>	2 <sup>nd</sup> Unit	0.00	2 <sup>nd</sup> Unit	0.00



Art Form Architecture, LLC

## BLISS RANCH - 1<sup>ST</sup> FLOOR

718.145.v4 GR

Some features shown are optional. Your Purchase & Sale Agreement governs, whether items are labeled "optional" in this document or not.



©2015-2018 Art Form Architecture  
Bliss Ranch  
Artform Home Plans

Vaulted Ceiling in Dining - Additional Image

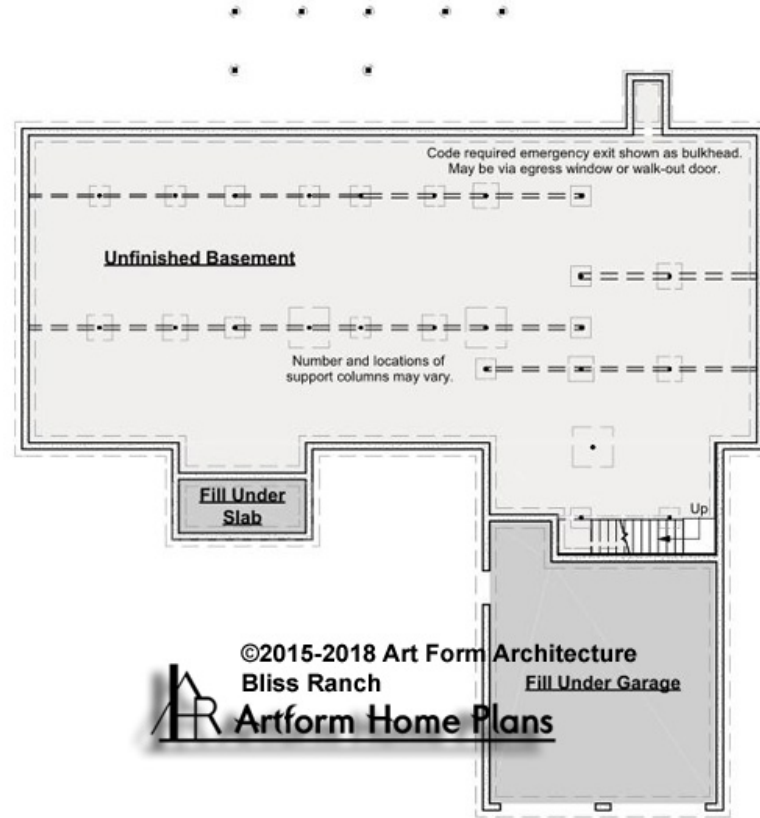


# BLISS RANCH - BASEMENT

## 718.145.v4 GR

Note - not shown here, this basement is over 2000 sf. Under the new code it requires a second means of egress (which can be an egress window/window well).

Some features shown are optional. Your Purchase & Sale Agreement governs, whether items are labeled "optional" in this document or not.



CLG HT SHOWN 7'-8"    CLG HT POSSIBLE 9'-0"

\* Major Change Fee, see website plan page for cost

F1 LIVING AREA		F1 BEDROOMS		F1 BATHROOMS	
0	FT	0		0	
Main	0.00	Main	0.00	Main	0.00
Future	0.00	Future	0.00	Future	0.00
2 <sup>nd</sup> Unit	0.00	2 <sup>nd</sup> Unit	0.00	2 <sup>nd</sup> Unit	0.00



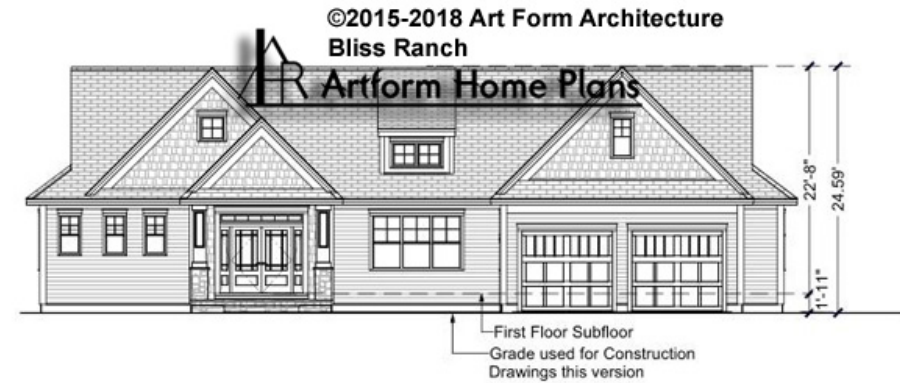


Art Form Architecture, LLC

## BLISS RANCH - FRONT ELEVATION

### 718.145.v4 GR

Some features shown are optional. Your Purchase & Sale Agreement governs, whether items are labeled "optional" in this document or not.





Art Form Architecture, LLC

## BLISS RANCH - RIGHT ELEVATION

### 718.145.v4 GR

Some features shown are optional. Your Purchase & Sale Agreement governs, whether items are labeled "optional" in this document or not.





Art Form Architecture, LLC

## BLISS RANCH - REAR ELEVATION

718.145.v4 GR

—  
Some features shown are optional. Your Purchase & Sale Agreement governs, whether items are labeled "optional" in this document or not.





Art Form Architecture, LLC

## BLISS RANCH - LEFT ELEVATION

718.145.v4 GR

Some features shown are optional. Your Purchase & Sale Agreement governs, whether items are labeled "optional" in this document or not.

