



# BERYL 947.120

In addition to our Terms and Conditions (the "Terms"), please be aware of the following:

Art Form Architecture, LLC ("Artform") requires that our Drawings be built substantially as designed. Artform will not be obligated by or liable for use of this design with markups as part of any builder agreement. While we attempt to accommodate where possible and reasonable, and where the changes do not denigrate our design, any and all changes to Drawings must be approved in writing by Artform. It is recommended that you have your Drawing updated by Artform prior to attaching any Drawing to any builder agreement. Artform shall not be responsible for the misuse of or unauthorized alterations to any of its Drawings.



Width 38.00 FT

Depth 49.38 FT

Height 27.42 FT

LIVING AREA		BEDROOMS		BATHROOMS	
	2639 FT <sup>2</sup>		5		2.5
Main	2639 FT <sup>2</sup>	Main	3	Main	2.5
Future	0 FT <sup>2</sup>	Future	2	Future	0
2 <sup>nd</sup> Unit	0 FT <sup>2</sup>	2 <sup>nd</sup> Unit	0	2 <sup>nd</sup> Unit	0

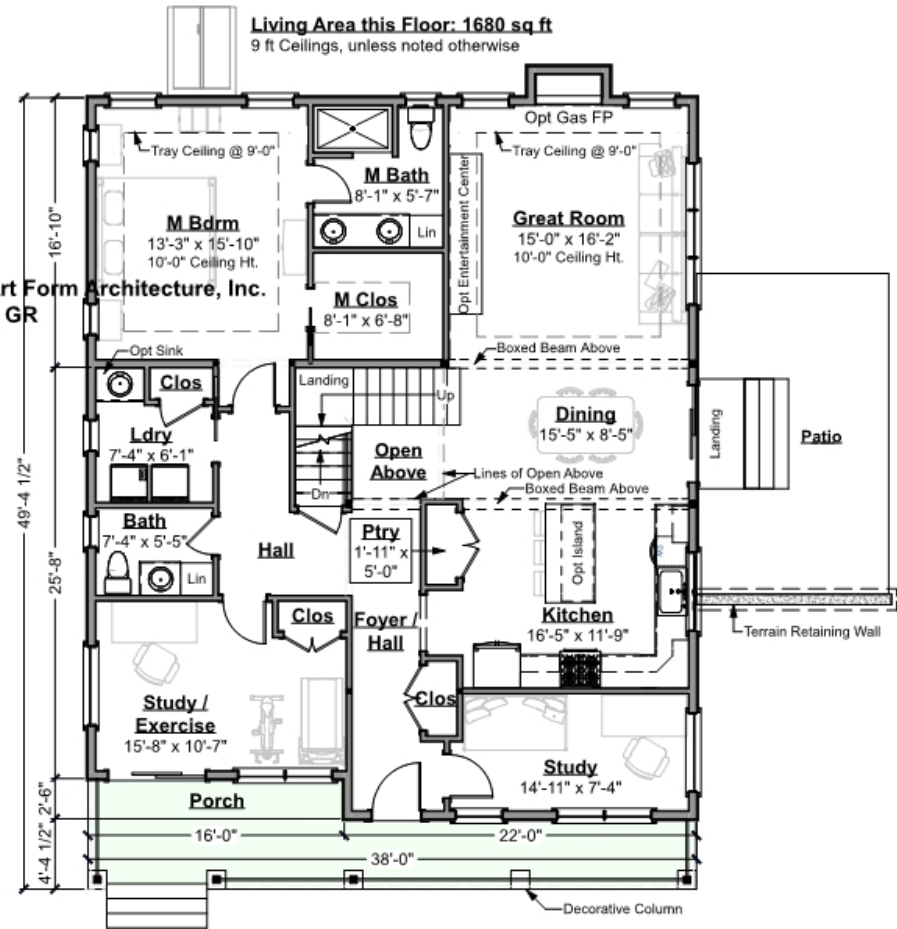


# BERYL - 1<sup>ST</sup> FLOOR

## 947.120

Some features shown are optional. Your Purchase & Sale Agreement governs, whether items are labeled "optional" in this document or not.

©2018-2023 Art Form Architecture, Inc.  
Beryl 947.120 GR



CLG HT SHOWN 9'-0"      CLG HT POSSIBLE 8'-0"

\* Major Change Fee, see website plan page for cost

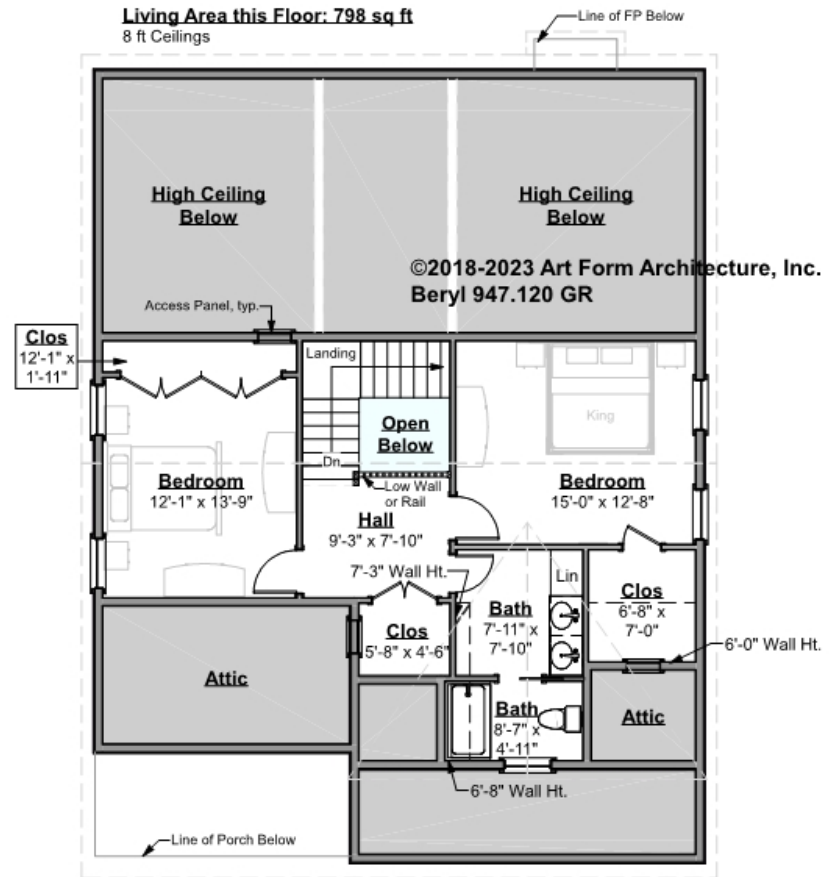
F1 LIVING AREA	1680 FT	F1 BEDROOMS	3	F1 BATHROOMS	1.5
Main	1680.00 FT	Main	1.00	Main	1.50
Future	FT	Future	2.00	Future	
2 <sup>nd</sup> Unit	FT	2 <sup>nd</sup> Unit		2 <sup>nd</sup> Unit	



# BERYL - 2<sup>ND</sup> FLOOR

## 947.120

Some features shown are optional. Your Purchase & Sale Agreement governs, whether items are labeled "optional" in this document or not.



CLG HT SHOWN 8'-0"    CLG HT POSSIBLE 9'-0"

\* Major Change Fee, see website plan page for cost

F1 LIVING AREA	798 <sup>FT</sup>	F1 BEDROOMS	2	F1 BATHROOMS	1
Main	798.00 <sup>FT</sup>	Main	2.00	Main	1.00
Future	FT	Future		Future	
2 <sup>nd</sup> Unit	FT	2 <sup>nd</sup> Unit		2 <sup>nd</sup> Unit	

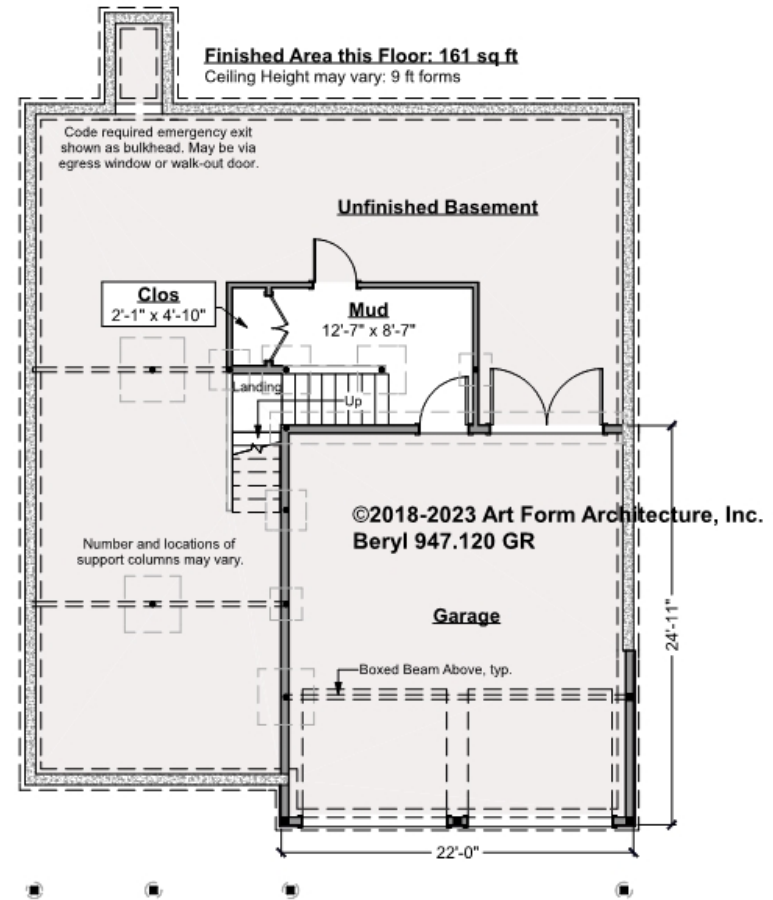


# BERYL - BASEMENT

## 947.120

Note: finished basement area is NOT included in main or future Living Area, but IS shown on CDs. We do this so Search doesn't mislead.

Some features shown are optional. Your Purchase & Sale Agreement governs, whether items are labeled "optional" in this document or not.



CLG HT SHOWN 9'-0"      CLG HT POSSIBLE 7'-8"

\* Major Change Fee, see website plan page for cost

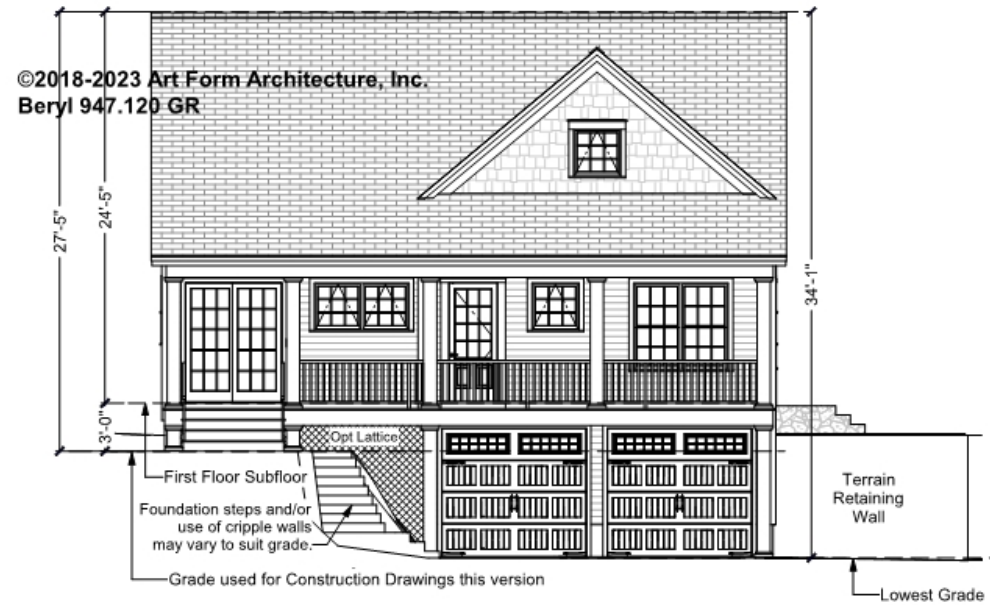
F1 LIVING AREA	161 FT	F1 BEDROOMS	0	F1 BATHROOMS	0
Main	161.00 FT	Main		Main	
Future	FT	Future		Future	
2 <sup>nd</sup> Unit	FT	2 <sup>nd</sup> Unit		2 <sup>nd</sup> Unit	



## BERYL - FRONT ELEVATION

947.120

Some features shown are optional. Your Purchase & Sale Agreement governs, whether items are labeled "optional" in this document or not.





Art Form Architecture, LLC

## BERYL - RIGHT ELEVATION

947.120

Some features shown are optional. Your Purchase & Sale Agreement governs, whether items are labeled "optional" in this document or not.





Art Form Architecture, LLC

## BERYL - REAR ELEVATION

947.120

—  
Some features shown are optional. Your Purchase & Sale Agreement governs, whether items are labeled "optional" in this document or not.





Art Form Architecture, LLC

## BERYL - LEFT ELEVATION

947.120

—  
Some features shown are optional. Your Purchase & Sale Agreement governs, whether items are labeled "optional" in this document or not.

