



APRIL GODETIA PREMIER 1141.129 GR

Part of the **April in the Country Collection**.

In addition to our Terms and Conditions (the "Terms"), please be aware of the following:

Art Form Architecture, LLC ("Artform") requires that our Drawings be built substantially as designed. Artform will not be obligated by or liable for use of this design with markups as part of any builder agreement. While we attempt to accommodate where possible and reasonable, and where the changes do not denigrate our design, any and all changes to Drawings must be approved in writing by Artform. It is recommended that you have your Drawing updated by Artform prior to attaching any Drawing to any builder agreement. Artform shall not be responsible for the misuse of or unauthorized alterations to any of its Drawings.



Width 102.54 ^{FT}

Depth 70.33 ^{FT}

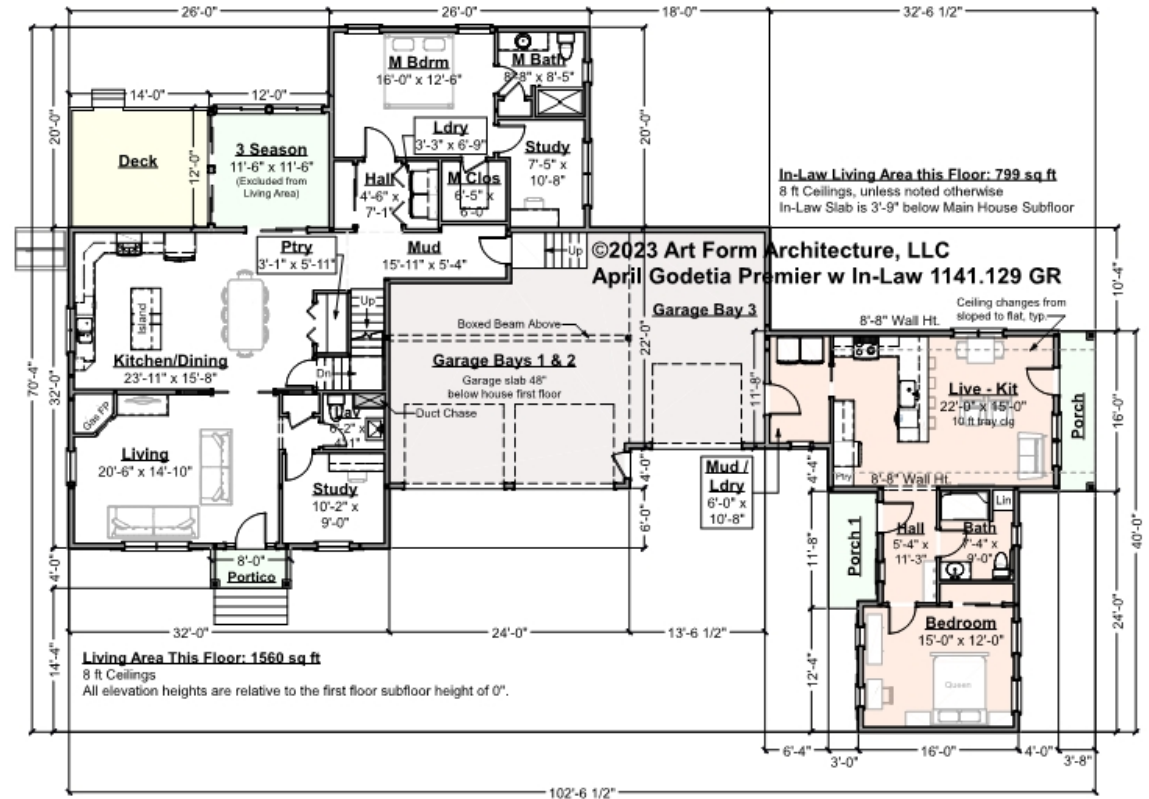
Height 27.58 ^{FT}

| LIVING AREA | | BEDROOMS | | BATHROOMS | |
|----------------------|--------------------|----------------------|---|----------------------|-----|
| | 3296 ^{FT} | | 5 | | 3.5 |
| Main | 2497 ^{FT} | Main | 3 | Main | 2.5 |
| Future | 0 ^{FT} | Future | 1 | Future | 0 |
| 2 nd Unit | 799 ^{FT} | 2 nd Unit | 1 | 2 nd Unit | 1 |



APRIL GODETIA PREMIER - 1ST FLOOR 1141.129 GR

Some features shown are optional. Your Purchase & Sale Agreement governs, whether items are labeled "optional" in this document or not.



CLG HT SHOWN 8'-0" CLG HT POSSIBLE 9'-0"

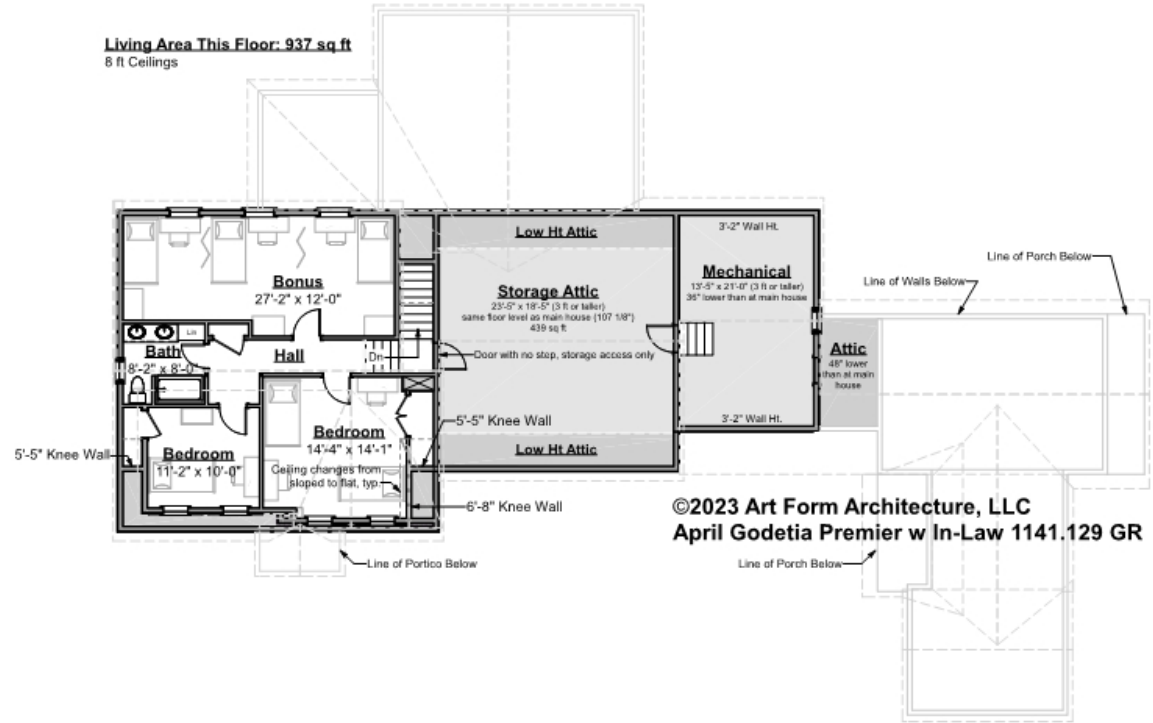
* Major Change Fee, see website plan page for cost

| F1 LIVING AREA | 2359 FT | F1 BEDROOMS | 2 | F1 BATHROOMS | 2.5 |
|----------------------|------------|----------------------|------|----------------------|------|
| Main | 1560.00 FT | Main | 1.00 | Main | 1.50 |
| Future | FT | Future | | Future | |
| 2 nd Unit | 799.00 FT | 2 nd Unit | 1.00 | 2 nd Unit | 1.00 |



APRIL GODETIA PREMIER - 2ND FLOOR 1141.129 GR

Some features shown are optional. Your Purchase & Sale Agreement governs, whether items are labeled "optional" in this document or not.



CLG HT SHOWN 8'-0" CLG HT POSSIBLE 9'-0"

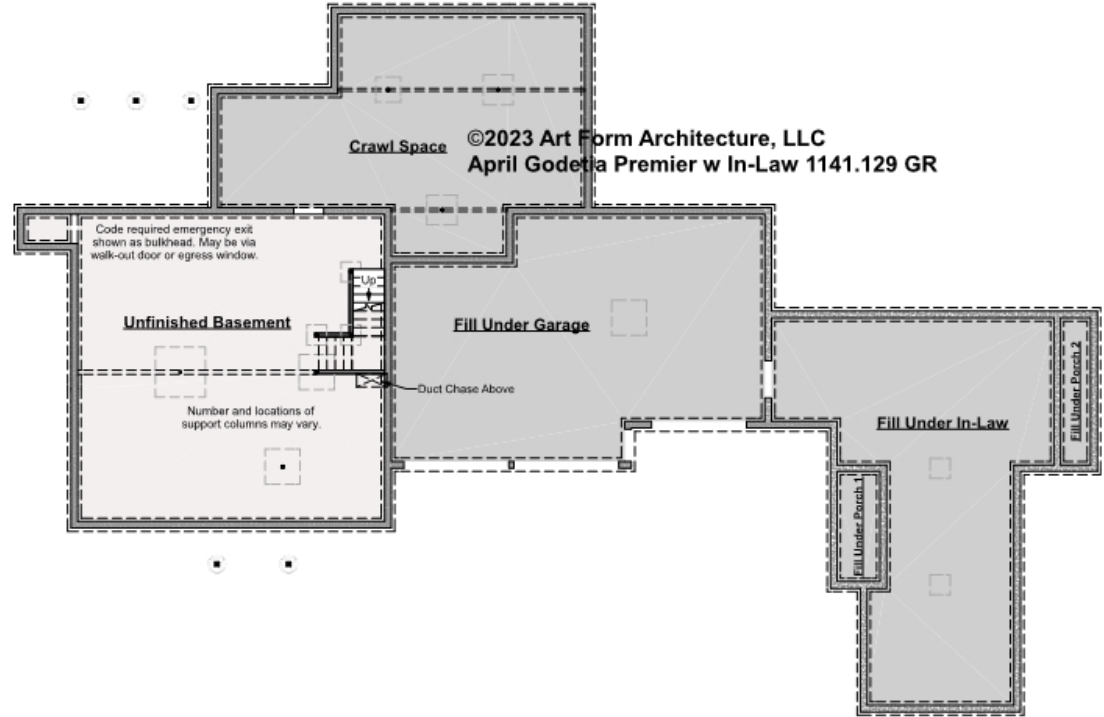
* Major Change Fee, see website plan page for cost

| F1 LIVING AREA | 937 ^{FT} | F1 BEDROOMS | 3 | F1 BATHROOMS | 1 |
|----------------------|----------------------|----------------------|------|----------------------|------|
| Main | 937.00 ^{FT} | Main | 2.00 | Main | 1.00 |
| Future | FT | Future | 1.00 | Future | |
| 2 nd Unit | FT | 2 nd Unit | | 2 nd Unit | |



APRIL GODETIA PREMIER - BASEMENT 1141.129 GR

Some features shown are optional. Your Purchase & Sale Agreement governs, whether items are labeled "optional" in this document or not.



CLG HT SHOWN 7'-8" CLG HT POSSIBLE 10' & Up

** Major Change Fee, see website plan page for cost*

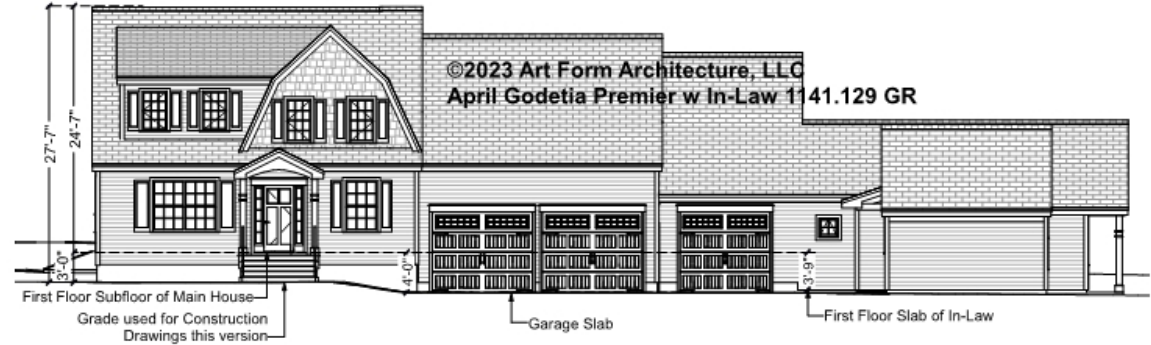
| F1 LIVING AREA | | F1 BEDROOMS | | F1 BATHROOMS | |
|----------------------|----|----------------------|--|----------------------|--|
| 0 | FT | 0 | | 0 | |
| Main | FT | Main | | Main | |
| Future | FT | Future | | Future | |
| 2 nd Unit | FT | 2 nd Unit | | 2 nd Unit | |



APRIL GODETIA PREMIER - FRONT ELEVATION

1141.129 GR

Some features shown are optional. Your Purchase & Sale Agreement governs, whether items are labeled "optional" in this document or not.





Art Form Architecture, LLC

APRIL GODETIA PREMIER - RIGHT ELEVATION

1141.129 GR

—
Some features shown are optional. Your Purchase & Sale Agreement governs, whether items are labeled "optional" in this document or not.



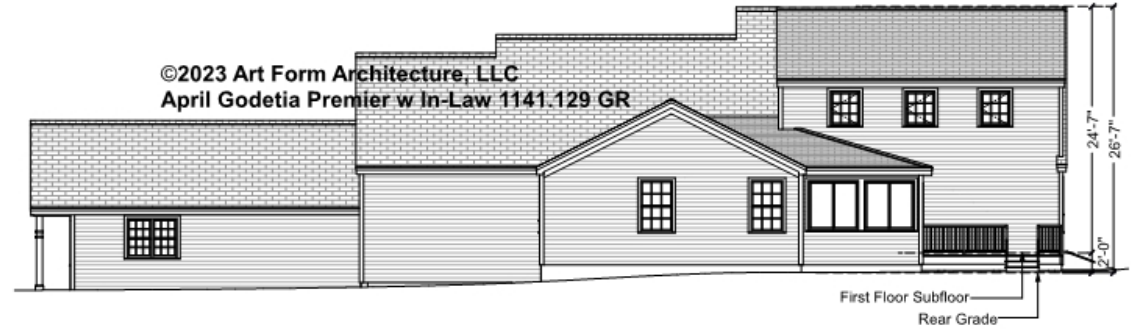


Art Form Architecture, LLC

APRIL GODETIA PREMIER - LEFT ELEVATION

1141.129 GR

Some features shown are optional. Your Purchase & Sale Agreement governs, whether items are labeled "optional" in this document or not.





Art Form Architecture, LLC

APRIL GODETIA PREMIER - LEFT ELEVATION

1141.129 GR

—
Some features shown are optional. Your Purchase & Sale Agreement governs, whether items are labeled "optional" in this document or not.

©2023 Art Form Architecture, LLC
April Godetia Premier w In-Law 1141.129 GR





Art Form Architecture, LLC

APRIL GODETIA PREMIER - REAR RENDER 1141.129 GR

—
Some features shown are optional. Your Purchase & Sale Agreement governs, whether items are labeled "optional" in this document or not.

