



ALWYN EDEN

1072.500 ER

In addition to our Terms and Conditions (the "Terms"), please be aware of the following:

Art Form Architecture, LLC ("Artform") requires that our Drawings be built substantially as designed. Artform will not be obligated by or liable for use of this design with markups as part of any builder agreement. While we attempt to accommodate where possible and reasonable, and where the changes do not denigrate our design, any and all changes to Drawings must be approved in writing by Artform. It is recommended that you have your Drawing updated by Artform prior to attaching any Drawing to any builder agreement. Artform shall not be responsible for the misuse of or unauthorized alterations to any of its Drawings.



Width 28.00 FT

Depth 41.08 FT

Height 24.92 FT

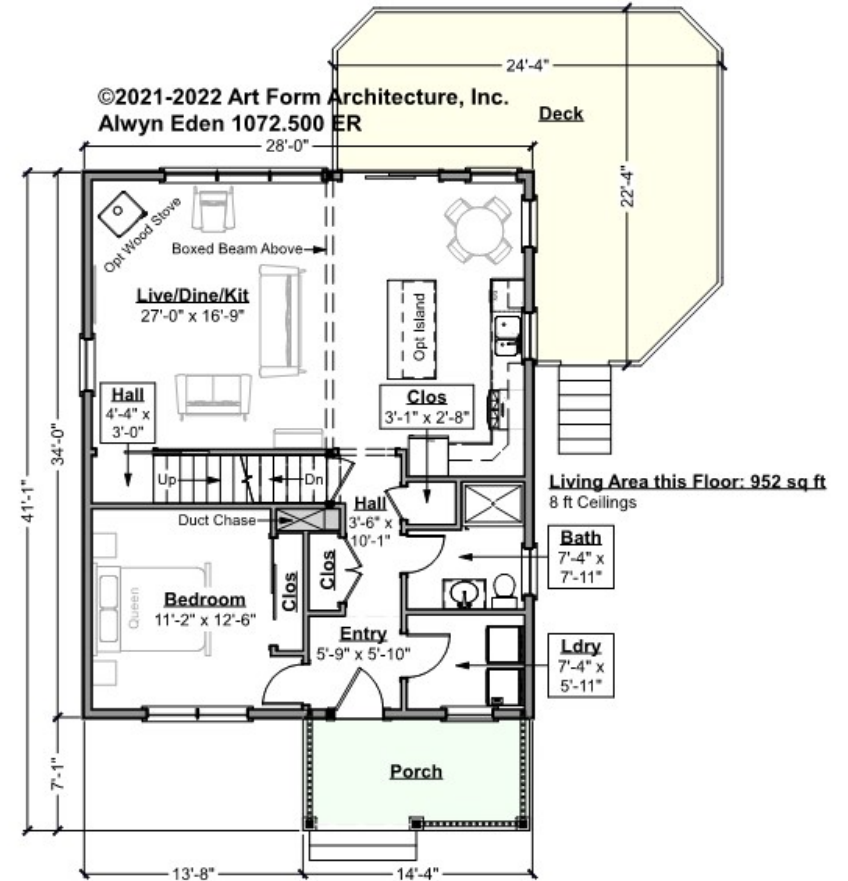
LIVING AREA		BEDROOMS		BATHROOMS	
	1614 FT ²		3		2.5
Main	1614 FT ²	Main	3	Main	2.5
Future	0 FT ²	Future	0	Future	0
2 nd Unit	0 FT ²	2 nd Unit	0	2 nd Unit	0



ALWYN EDEN - 1ST FLOOR

1072.500 ER

Some features shown are optional. Your Purchase & Sale Agreement governs, whether items are labeled "optional" in this document or not.



CLG HT SHOWN 8'-0" CLG HT POSSIBLE 9'-0"

* Major Change Fee, see website plan page for cost

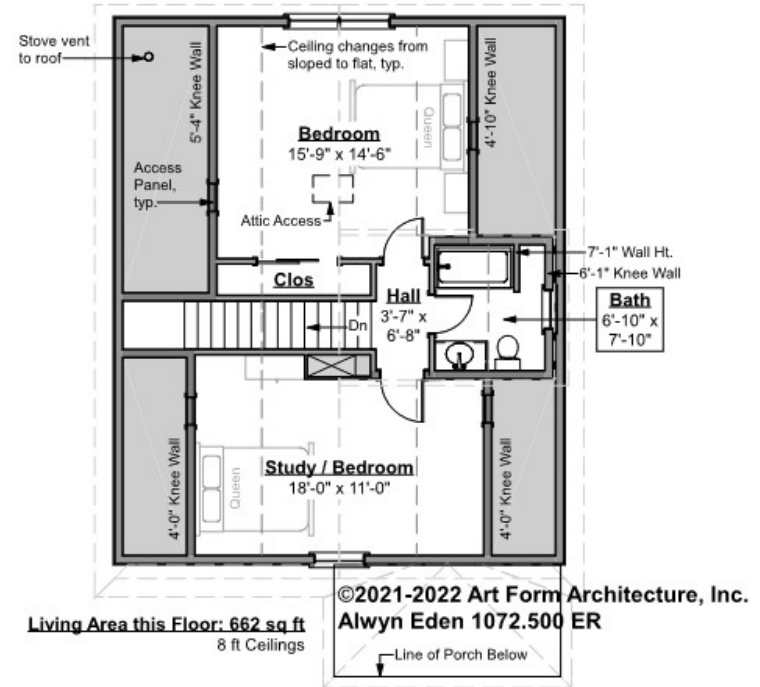
F1 LIVING AREA	952 ^{FT}	F1 BEDROOMS	1	F1 BATHROOMS	1
Main	952.00 ^{FT}	Main	1.00	Main	1.00
Future	FT	Future		Future	
2 nd Unit	FT	2 nd Unit		2 nd Unit	



ALWYN EDEN - 2ND FLOOR

1072.500 ER

Some features shown are optional. Your Purchase & Sale Agreement governs, whether items are labeled "optional" in this document or not.



CLG HT SHOWN 8'-0" CLG HT POSSIBLE 8'-0"

* Major Change Fee, see website plan page for cost

F1 LIVING AREA		F1 BEDROOMS		F1 BATHROOMS	
	662 ^{FT}		2		1
Main	662.00 ^{FT}	Main	2.00	Main	1.00
Future	FT	Future		Future	
2 nd Unit	FT	2 nd Unit		2 nd Unit	



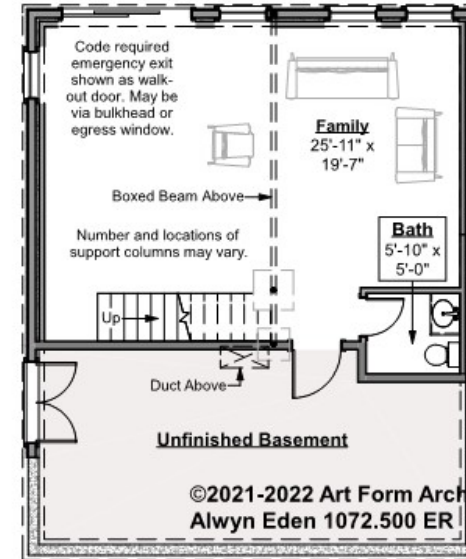
ALWYN EDEN - BASEMENT

1072.500 ER

Note: finished basement area is NOT included in main or future Living Area, but IS shown on CDs. We do this so Search doesn't mislead - everyone knows you can finish a basement!

Some features shown are optional. Your Purchase & Sale Agreement governs, whether items are labeled "optional" in this document or not.

Living Area this Floor: 607 sq ft
 Ceiling Heights May Vary: 8 ft Forms



CLG HT SHOWN 8'-0" CLG HT POSSIBLE 9'-0"

** Major Change Fee, see website plan page for cost*

F1 LIVING AREA		F1 BEDROOMS		F1 BATHROOMS	
	0 ^{FT}		0		0.5
Main	FT	Main		Main	0.50
Future	FT	Future		Future	
2 nd Unit	FT	2 nd Unit		2 nd Unit	



ALWYN EDEN - FRONT ELEVATION 1072.500 ER

Some features shown are optional. Your Purchase & Sale Agreement governs, whether items are labeled "optional" in this document or not.

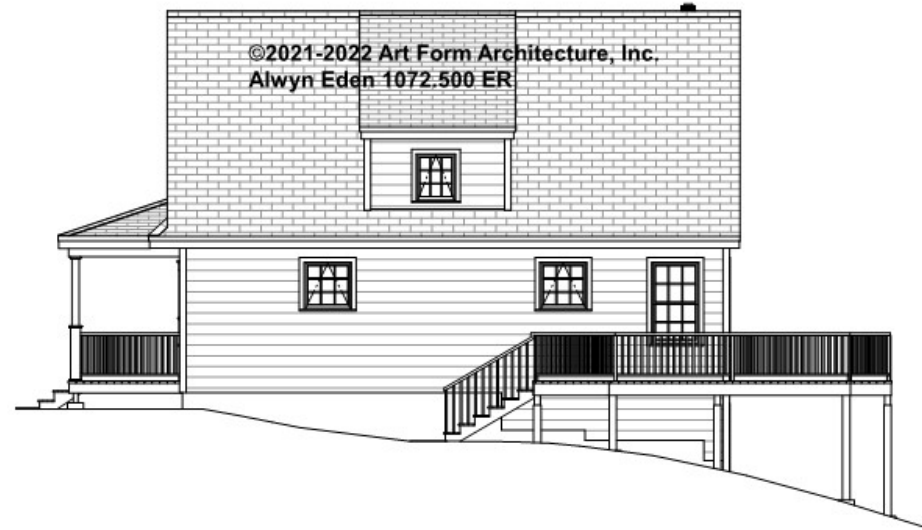




Art Form Architecture, LLC

ALWYN EDEN - RIGHT ELEVATION 1072.500 ER

Some features shown are optional. Your Purchase & Sale Agreement governs, whether items are labeled "optional" in this document or not.





Art Form Architecture, LLC

ALWYN EDEN - REAR ELEVATION

1072.500 ER

Some features shown are optional. Your Purchase & Sale Agreement governs, whether items are labeled "optional" in this document or not.





Art Form Architecture, LLC

ALWYN EDEN - LEFT ELEVATION 1072.500 ER

Some features shown are optional. Your Purchase & Sale Agreement governs, whether items are labeled "optional" in this document or not.





Art Form Architecture, LLC

ALWYN EDEN - REAR RENDER 1072.500 ER

Some features shown are optional. Your Purchase & Sale Agreement governs, whether items are labeled "optional" in this document or not.

