



ALEXIS PRIME

360.120.v9 GL

First floor framing at left side uses 11 7/8" wood i-joists.

In addition to our Terms and Conditions (the "Terms"), please be aware of the following:

Art Form Architecture, LLC ("Artform") requires that our Drawings be built substantially as designed. Artform will not be obligated by or liable for use of this design with markups as part of any builder agreement. While we attempt to accommodate where possible and reasonable, and where the changes do not denigrate our design, any and all changes to Drawings must be approved in writing by Artform. It is recommended that you have your Drawing updated by Artform prior to attaching any Drawing to any builder agreement. Artform shall not be responsible for the misuse of or unauthorized alterations to any of its Drawings.



© 2011-2021 Art Form Architecture, Inc.
Alexis 360.120.v9 GL

Width 46.00 FT

Depth 36.08 FT

Height 33.50 FT

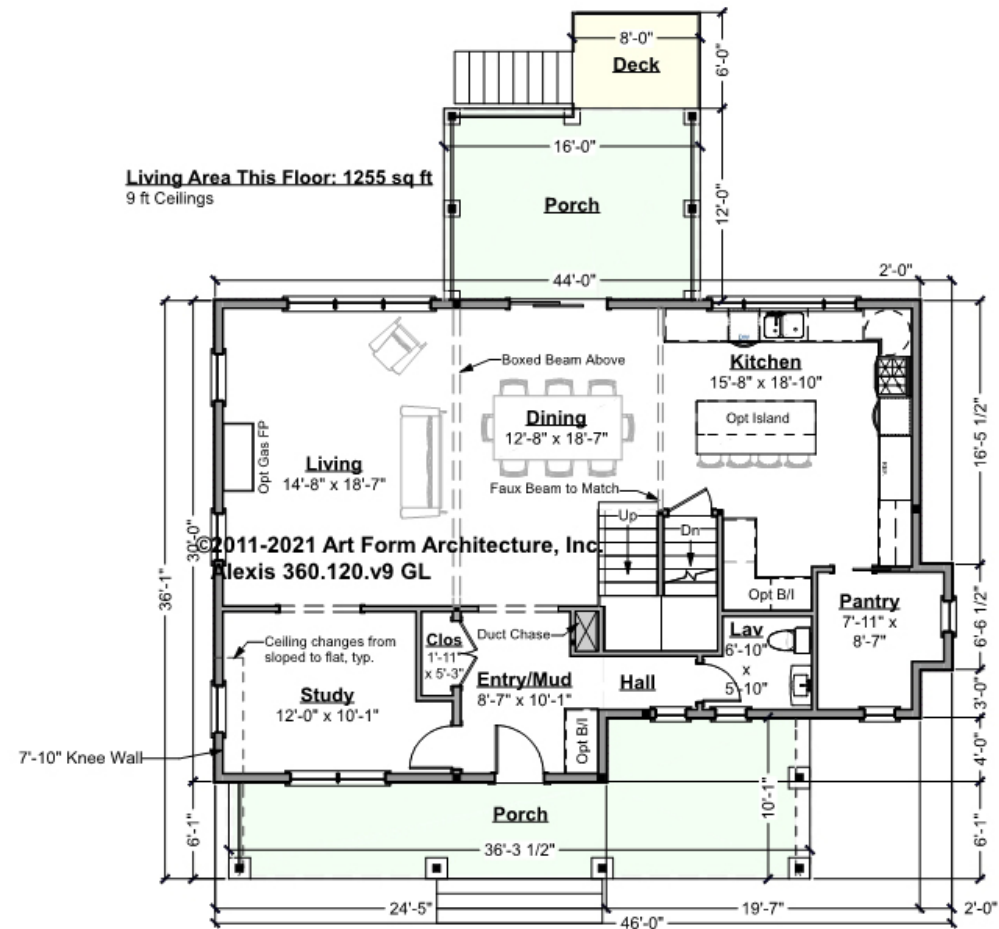
LIVING AREA		BEDROOMS		BATHROOMS	
	3086 FT ²		6		2.5
Main	3086 FT ²	Main	4	Main	2.5
Future	0 FT ²	Future	2	Future	0
2 nd Unit	0 FT ²	2 nd Unit	0	2 nd Unit	0



ALEXIS PRIME - 1ST FLOOR

360.120.v9 GL

Some features shown are optional. Your Purchase & Sale Agreement governs, whether items are labeled "optional" in this document or not.



CLG HT SHOWN 9'-0" CLG HT POSSIBLE 8'-0"

* Major Change Fee, see website plan page for cost

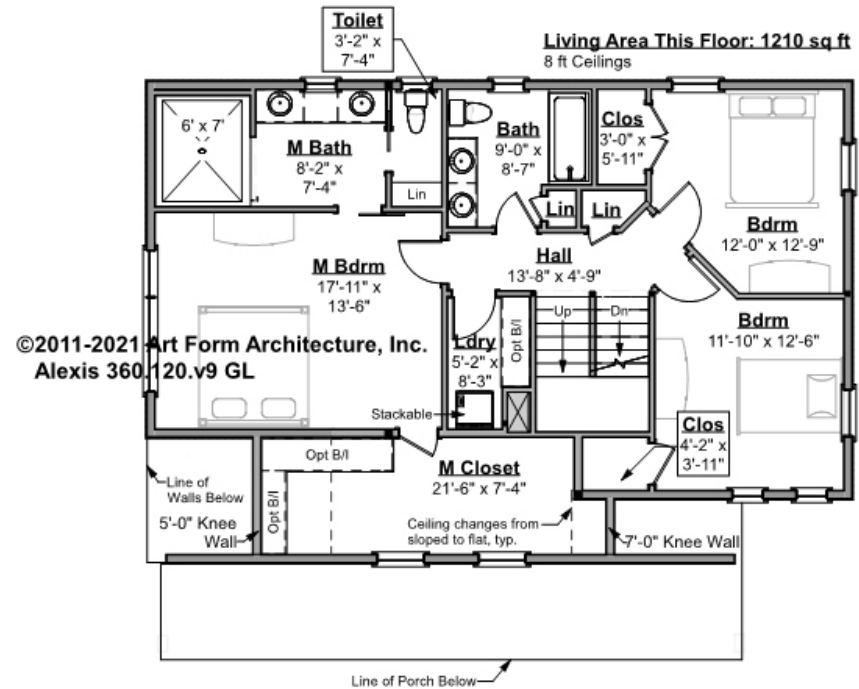
F1 LIVING AREA	1255 FT	F1 BEDROOMS	1	F1 BATHROOMS	0.5
Main	1255.00 FT	Main	0.00	Main	0.50
Future	0.00 FT	Future	1.00	Future	0.00
2 nd Unit	0.00 FT	2 nd Unit	0.00	2 nd Unit	0.00



ALEXIS PRIME - 2ND FLOOR

360.120.v9 GL

Some features shown are optional. Your Purchase & Sale Agreement governs, whether items are labeled "optional" in this document or not.



CLG HT SHOWN 8'-0" CLG HT POSSIBLE 8'-0"

* Major Change Fee, see website plan page for cost

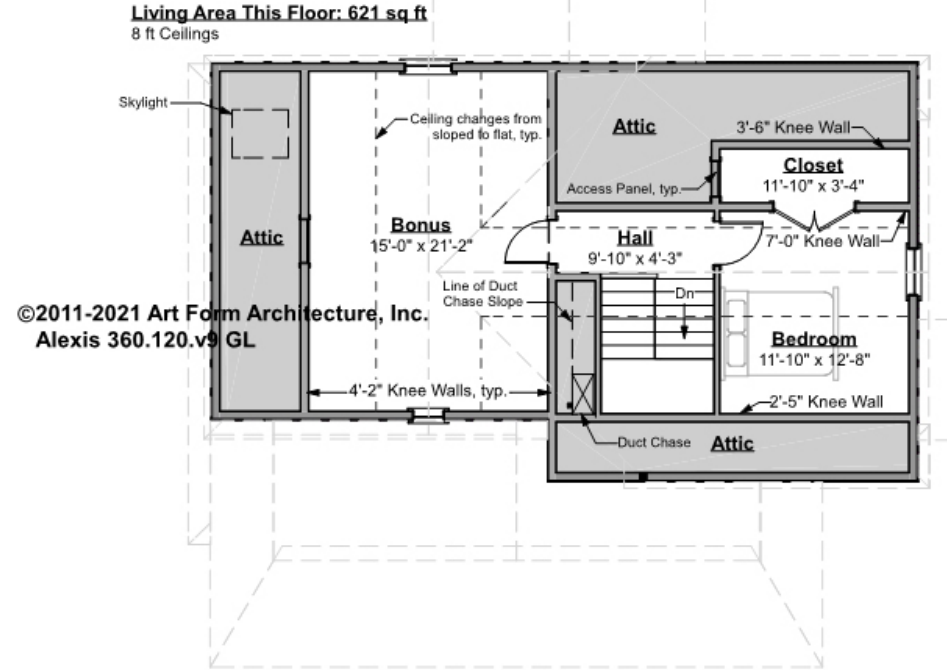
F1 LIVING AREA		F1 BEDROOMS		F1 BATHROOMS	
Main	1210.00 ^{FT}	Main	3.00	Main	2.00
Future	0.00 ^{FT}	Future	0.00	Future	0.00
2 nd Unit	0.00 ^{FT}	2 nd Unit	0.00	2 nd Unit	0.00



ALEXIS PRIME - 3RD FLOOR

360.120.v9 GL

Some features shown are optional. Your Purchase & Sale Agreement governs, whether items are labeled "optional" in this document or not.



CLG HT SHOWN 8'-0" CLG HT POSSIBLE 9'-0"

* Major Change Fee, see website plan page for cost

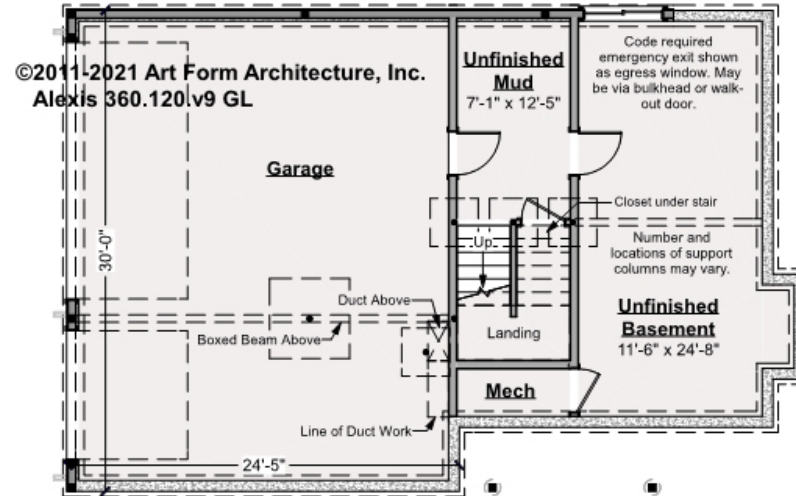
F1 LIVING AREA	621 ^{FT}	F1 BEDROOMS	2	F1 BATHROOMS	0
Main	621.00 ^{FT}	Main	1.00	Main	0.00
Future	0.00 ^{FT}	Future	1.00	Future	
2 nd Unit	0.00 ^{FT}	2 nd Unit	0.00	2 nd Unit	0.00



ALEXIS PRIME - BASEMENT

360.120.v9 GL

Some features shown are optional. Your Purchase & Sale Agreement governs, whether items are labeled "optional" in this document or not.



CLG HT SHOWN 7'-8" CLG HT POSSIBLE 7'-8"

* Major Change Fee, see website plan page for cost

F1 LIVING AREA		F1 BEDROOMS		F1 BATHROOMS	
0	FT	0		0	
Main	0.00	Main	0.00	Main	0.00
Future	0.00	Future	0.00	Future	0.00
2 nd Unit	0.00	2 nd Unit	0.00	2 nd Unit	0.00



ALEXIS PRIME - FRONT ELEVATION

360.120.v9 GL

Some features shown are optional. Your Purchase & Sale Agreement governs, whether items are labeled "optional" in this document or not.





Art Form Architecture, LLC

ALEXIS PRIME - RIGHT ELEVATION

360.120.v9 GL

Some features shown are optional. Your Purchase & Sale Agreement governs, whether items are labeled "optional" in this document or not.

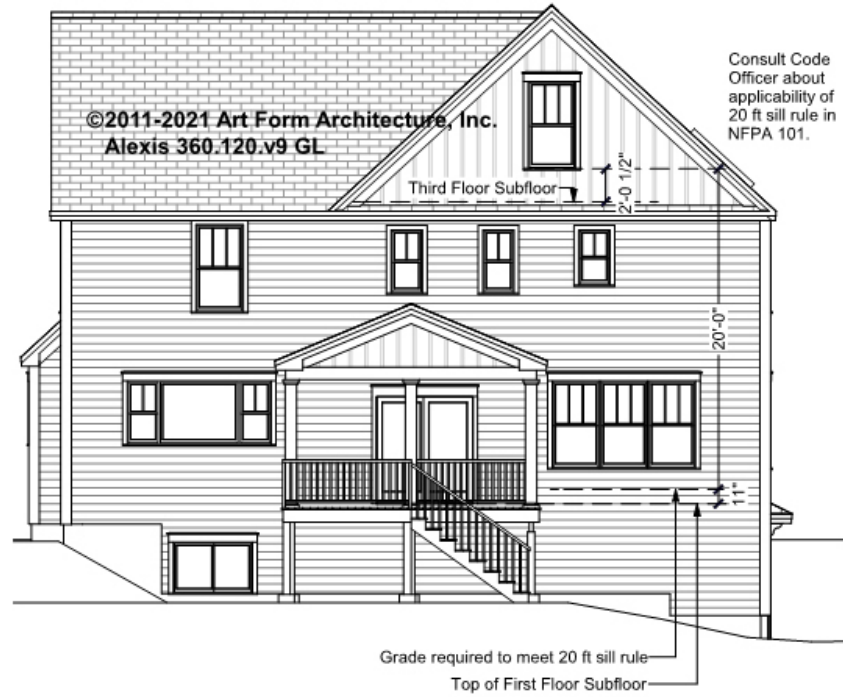




ALEXIS PRIME - REAR ELEVATION

360.120.v9 GL

Some features shown are optional. Your Purchase & Sale Agreement governs, whether items are labeled "optional" in this document or not.





ALEXIS PRIME - LEFT ELEVATION

360.120.v9 GL

Some features shown are optional. Your Purchase & Sale Agreement governs, whether items are labeled "optional" in this document or not.

