



## ALEXANDER PRIME

449.120.v9 GR

In addition to our Terms and Conditions (the "Terms"), please be aware of the following:

Art Form Architecture, LLC ("Artform") requires that our Drawings be built substantially as designed. Artform will not be obligated by or liable for use of this design with markups as part of any builder agreement. While we attempt to accommodate where possible and reasonable, and where the changes do not denigrate our design, any and all changes to Drawings must be approved in writing by Artform. It is recommended that you have your Drawing updated by Artform prior to attaching any Drawing to any builder agreement. Artform shall not be responsible for the misuse of or unauthorized alterations to any of its Drawings.



©2011 Art Form Architecture, LLC  
Alexander Prime 449.120.v9 GR

Width 46.00 FT

Depth 32.00 FT

Height 34.08 FT

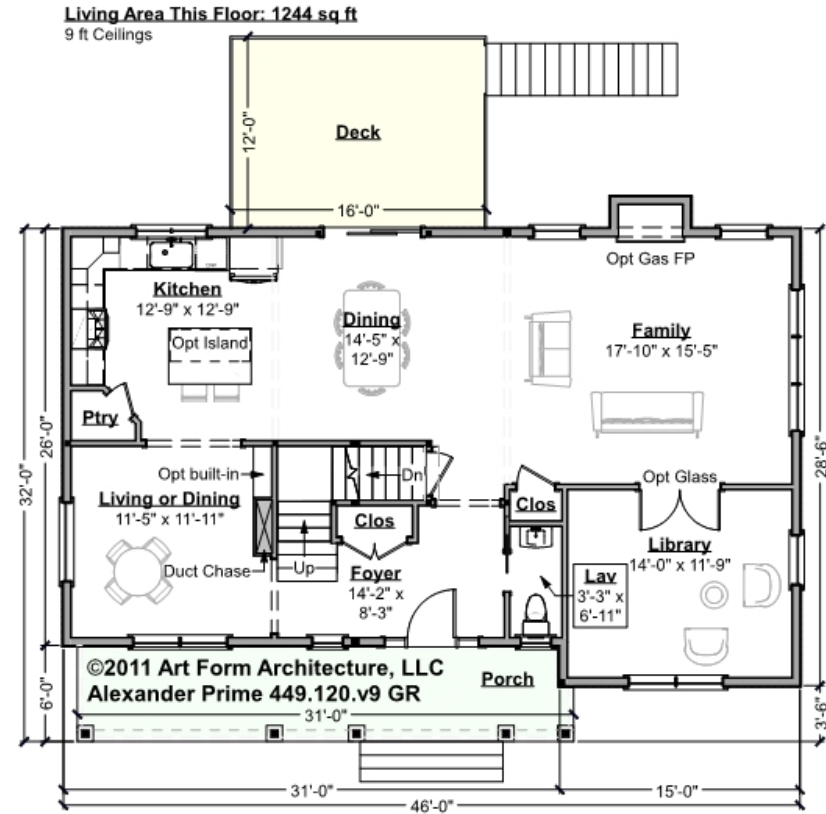
LIVING AREA		BEDROOMS		BATHROOMS	
	2669 FT		5		2.5
Main	2669 FT	Main	4	Main	2.5
Future	0 FT	Future	1	Future	0
2 <sup>nd</sup> Unit	0 FT	2 <sup>nd</sup> Unit	0	2 <sup>nd</sup> Unit	0



# ALEXANDER PRIME - 1<sup>ST</sup> FLOOR

## 449.120.v9 GR

Some features shown are optional. Your Purchase & Sale Agreement governs, whether items are labeled "optional" in this document or not.



CLG HT SHOWN 9'-0"    CLG HT POSSIBLE 8'-0"

\* Major Change Fee, see website plan page for cost

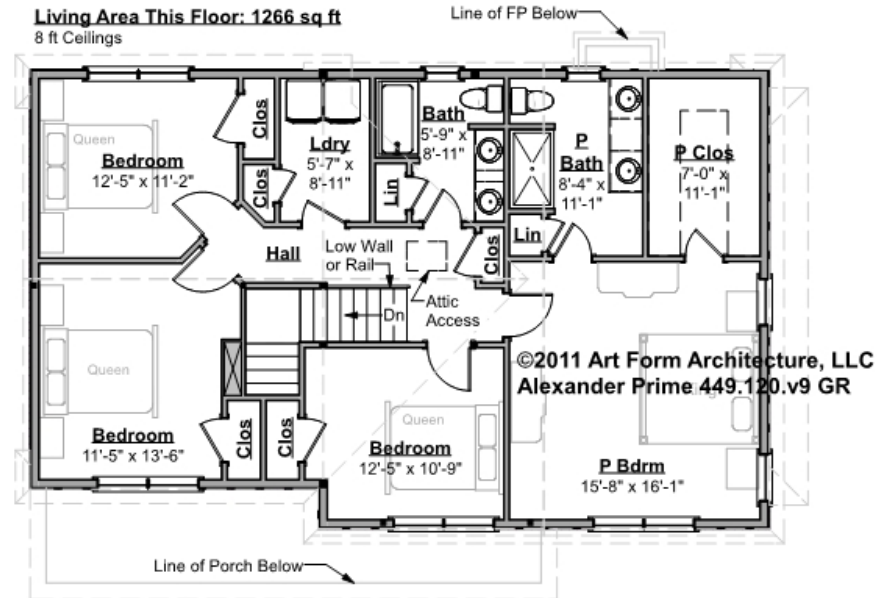
F1 LIVING AREA	1244 FT	F1 BEDROOMS	1	F1 BATHROOMS	0.5
Main	1244.00 FT	Main		Main	0.50
Future	FT	Future	1.00	Future	
2 <sup>nd</sup> Unit	FT	2 <sup>nd</sup> Unit		2 <sup>nd</sup> Unit	



# ALEXANDER PRIME - 2<sup>ND</sup> FLOOR

## 449.120.v9 GR

Some features shown are optional. Your Purchase & Sale Agreement governs, whether items are labeled "optional" in this document or not.



CLG HT SHOWN 8'-0"      CLG HT POSSIBLE 9'-0"

\* Major Change Fee, see website plan page for cost

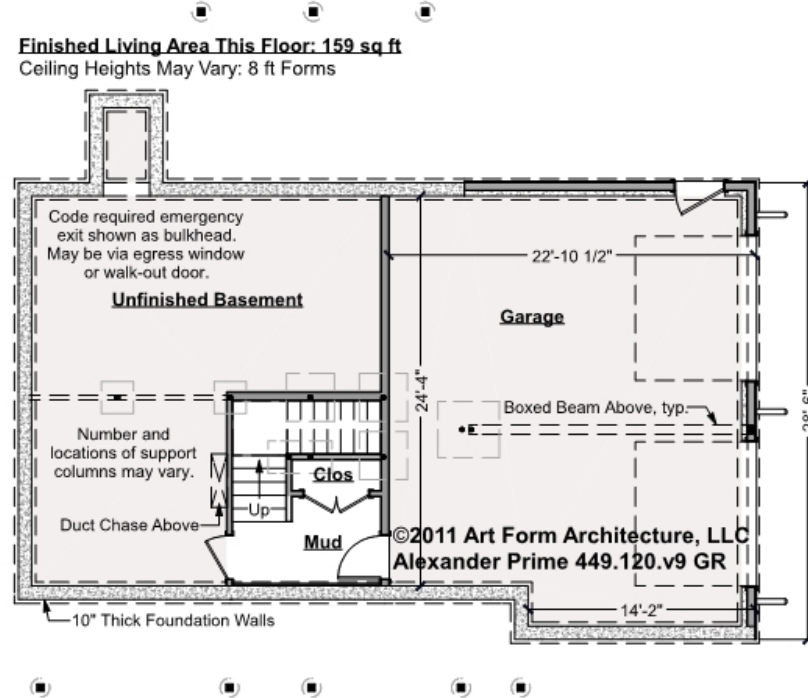
F1 LIVING AREA	1266 FT	F1 BEDROOMS	4	F1 BATHROOMS	2
Main	1266.00 FT	Main	4.00	Main	2.00
Future	FT	Future		Future	
2 <sup>nd</sup> Unit	FT	2 <sup>nd</sup> Unit		2 <sup>nd</sup> Unit	



# ALEXANDER PRIME - BASEMENT

## 449.120.v9 GR

Some features shown are optional. Your Purchase & Sale Agreement governs, whether items are labeled "optional" in this document or not.



**CLG HT SHOWN 7'-8"      CLG HT POSSIBLE 9'-0"**

*\* Major Change Fee, see website plan page for cost*

F1 LIVING AREA		F1 BEDROOMS		F1 BATHROOMS	
	159 <sup>FT</sup>		0		0
Main	159.00 <sup>FT</sup>	Main		Main	
Future	FT	Future		Future	
2 <sup>nd</sup> Unit	FT	2 <sup>nd</sup> Unit		2 <sup>nd</sup> Unit	



Art Form Architecture, LLC

## ALEXANDER PRIME - FRONT ELEVATION 449.120.v9 GR

Some features shown are optional. Your Purchase & Sale Agreement governs, whether items are labeled "optional" in this document or not.





Art Form Architecture, LLC

## ALEXANDER PRIME - RIGHT ELEVATION 449.120.v9 GR

Some features shown are optional. Your Purchase & Sale Agreement governs, whether items are labeled "optional" in this document or not.





Art Form Architecture, LLC

## ALEXANDER PRIME - REAR ELEVATION 449.120.v9 GR

Some features shown are optional. Your Purchase & Sale Agreement governs, whether items are labeled "optional" in this document or not.





Art Form Architecture, LLC

## ALEXANDER PRIME - LEFT ELEVATION

449.120.v9 GR

—  
Some features shown are optional. Your Purchase & Sale Agreement governs, whether items are labeled "optional" in this document or not.







Art Form Architecture, LLC

## ALEXANDER PRIME - REAR RENDER

### 449.120.v9 GR

Some features shown are optional. Your Purchase & Sale Agreement governs, whether items are labeled "optional" in this document or not.

