



ABIGAIL CLASSIC, 33X65

754.124.v3 GL

In addition to our Terms and Conditions (the "Terms"), please be aware of the following:

Art Form Architecture, LLC ("Artform") requires that our Drawings be built substantially as designed. Artform will not be obligated by or liable for use of this design with markups as part of any builder agreement. While we attempt to accommodate where possible and reasonable, and where the changes do not denigrate our design, any and all changes to Drawings must be approved in writing by Artform. It is recommended that you have your Drawing updated by Artform prior to attaching any Drawing to any builder agreement. Artform shall not be responsible for the misuse of or unauthorized alterations to any of its Drawings.



Width 33.00 FT

Depth 65.00 FT

Height 34.33 FT

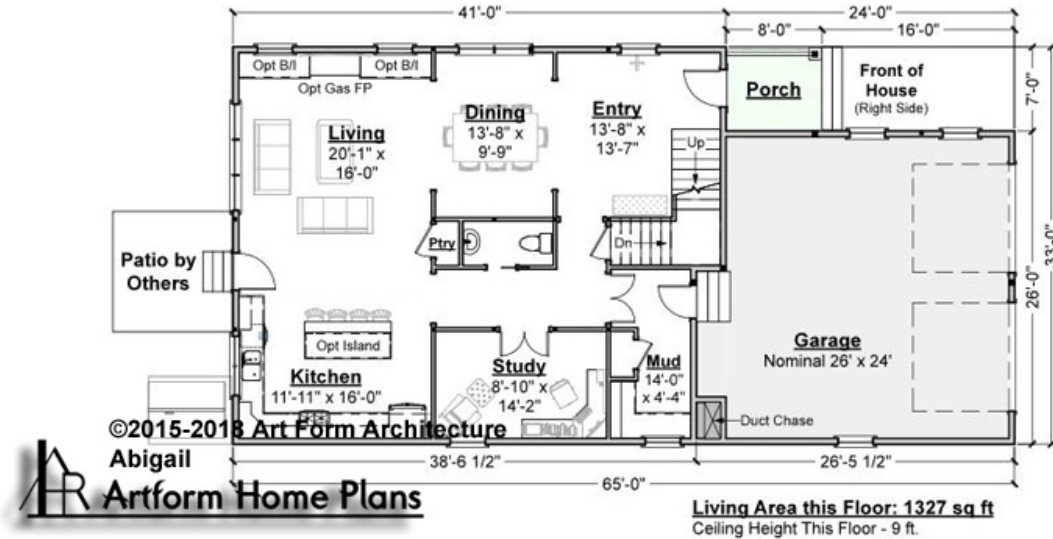
LIVING AREA		BEDROOMS		BATHROOMS	
	3670 FT		3		4.5
Main	3670 FT	Main	3	Main	4.5
Future	0 FT	Future	0	Future	0
2 nd Unit	0 FT	2 nd Unit	0	2 nd Unit	0



ABIGAIL CLASSIC, 33X65 - 1ST FLOOR

754.124.v3 GL

Some features shown are optional. Your Purchase & Sale Agreement governs, whether items are labeled "optional" in this document or not.



CLG HT SHOWN 9'-0" CLG HT POSSIBLE 8'-0"

* Major Change Fee, see website plan page for cost

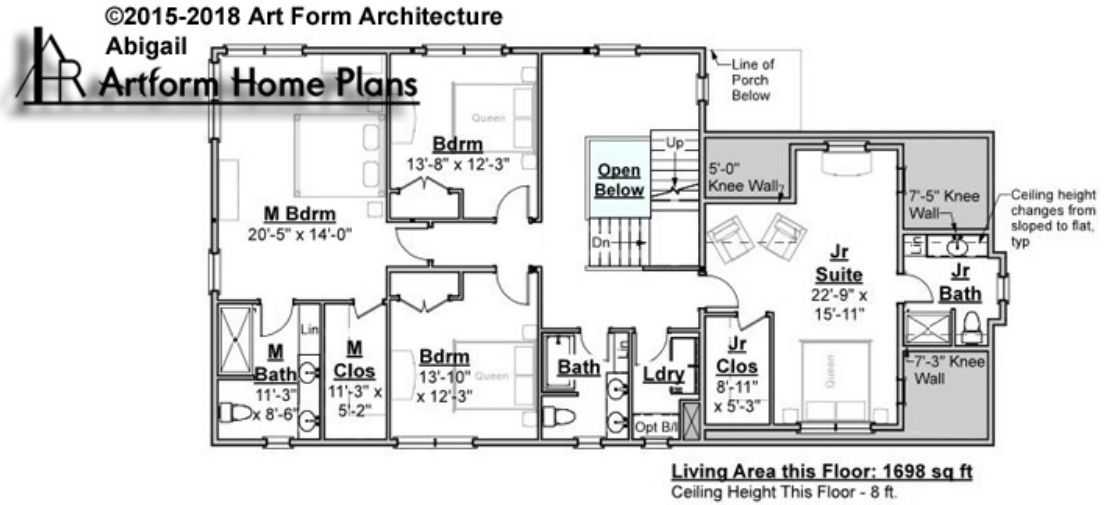
F1 LIVING AREA	1327 ^{FT}	F1 BEDROOMS	0	F1 BATHROOMS	0.5
Main	1327.00 ^{FT}	Main	0.00	Main	0.50
Future	0.00 ^{FT}	Future	0.00	Future	0.00
2 nd Unit	0.00 ^{FT}	2 nd Unit	0.00	2 nd Unit	0.00



ABIGAIL CLASSIC, 33X65 - 2ND FLOOR

754.124.v3 GL

Some features shown are optional. Your Purchase & Sale Agreement governs, whether items are labeled "optional" in this document or not.



CLG HT SHOWN 8'-0" CLG HT POSSIBLE 8'-0"

* Major Change Fee, see website plan page for cost

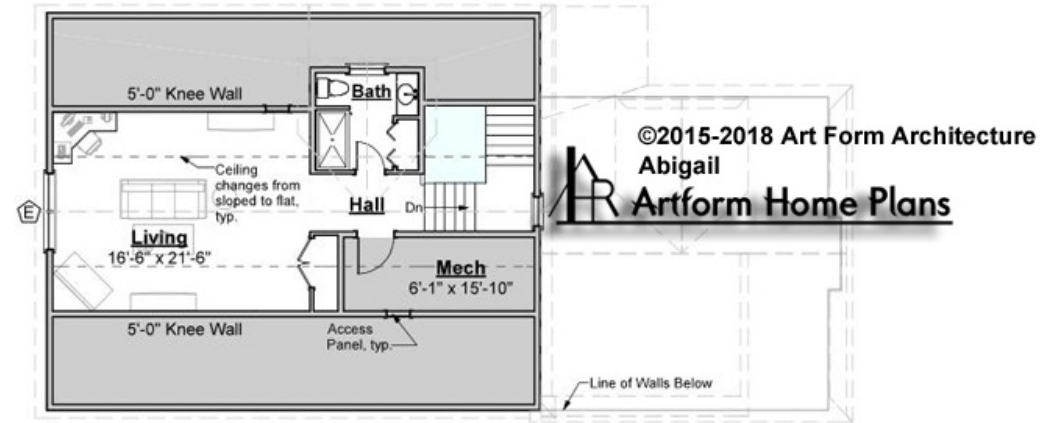
F1 LIVING AREA	1698 ^{FT}	F1 BEDROOMS	3	F1 BATHROOMS	3
Main	1698.00 ^{FT}	Main	3.00	Main	3.00
Future	0.00 ^{FT}	Future	0.00	Future	0.00
2 nd Unit	0.00 ^{FT}	2 nd Unit	0.00	2 nd Unit	0.00



ABIGAIL CLASSIC, 33X65 - 3RD FLOOR

754.124.v3 GL

Some features shown are optional. Your Purchase & Sale Agreement governs, whether items are labeled "optional" in this document or not.



Ⓔ One or more windows this floor may need to be lowered to meet egress, see elevations. This will trigger additional requirements:
 - Sill <24" from finished floor requires window guard
 - Sill <18" from finished floor requires tempering.

Living Area this Floor: 645 sq ft
 Ceiling Height This Floor - 8 ft.

CLG HT SHOWN 8'-0" CLG HT POSSIBLE 8'-0"

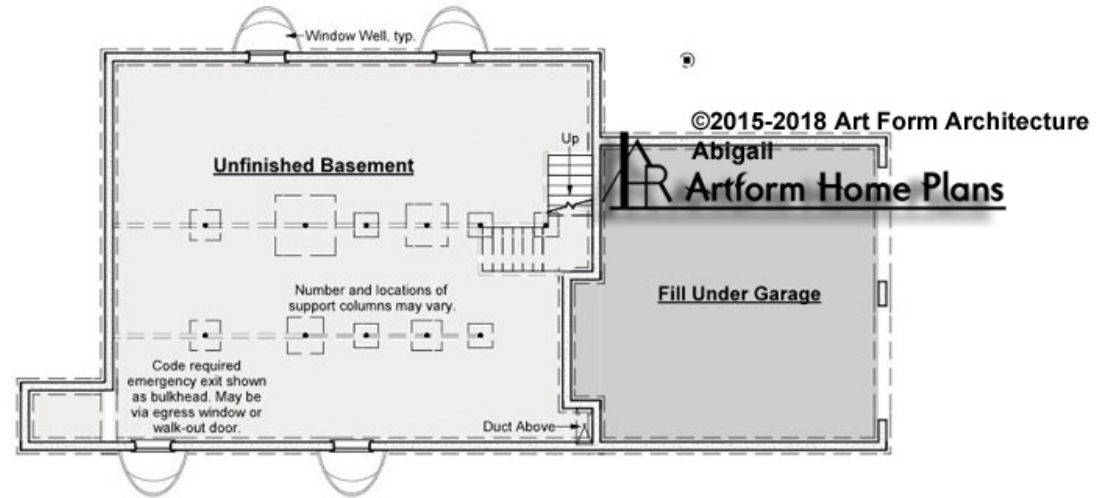
** Major Change Fee, see website plan page for cost*

F1 LIVING AREA		F1 BEDROOMS		F1 BATHROOMS	
	645 ^{FT}		0		1
Main	645.00 ^{FT}	Main	0.00	Main	1.00
Future	0.00 ^{FT}	Future	0.00	Future	
2 nd Unit	0.00 ^{FT}	2 nd Unit	0.00	2 nd Unit	0.00



ABIGAIL CLASSIC, 33X65 - BASEMENT 754.124.v3 GL

Some features shown are optional. Your Purchase & Sale Agreement governs, whether items are labeled "optional" in this document or not.



CLG HT SHOWN 7'-8" CLG HT POSSIBLE 9'-0"

* Major Change Fee, see website plan page for cost

F1 LIVING AREA		F1 BEDROOMS		F1 BATHROOMS	
	0 FT		0		0
Main	0.00 FT	Main	0.00	Main	0.00
Future	0.00 FT	Future	0.00	Future	0.00
2 nd Unit	0.00 FT	2 nd Unit	0.00	2 nd Unit	0.00

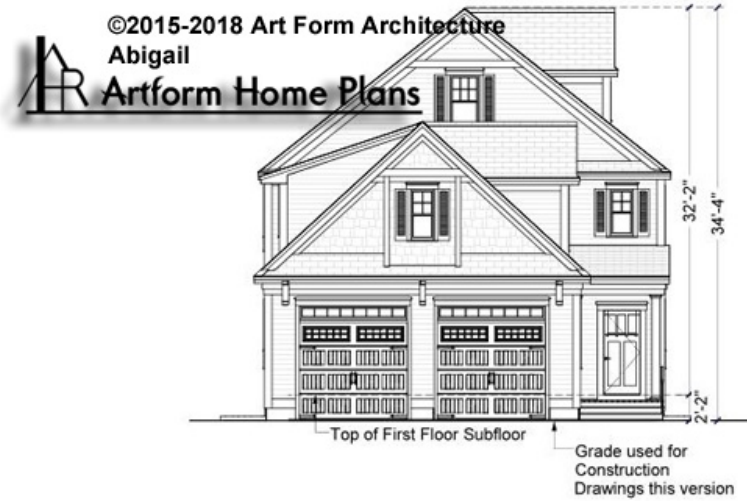


Art Form Architecture, LLC

ABIGAIL CLASSIC, 33X65 - FRONT ELEVATION

754.124.v3 GL

Some features shown are optional. Your Purchase & Sale Agreement governs, whether items are labeled "optional" in this document or not.



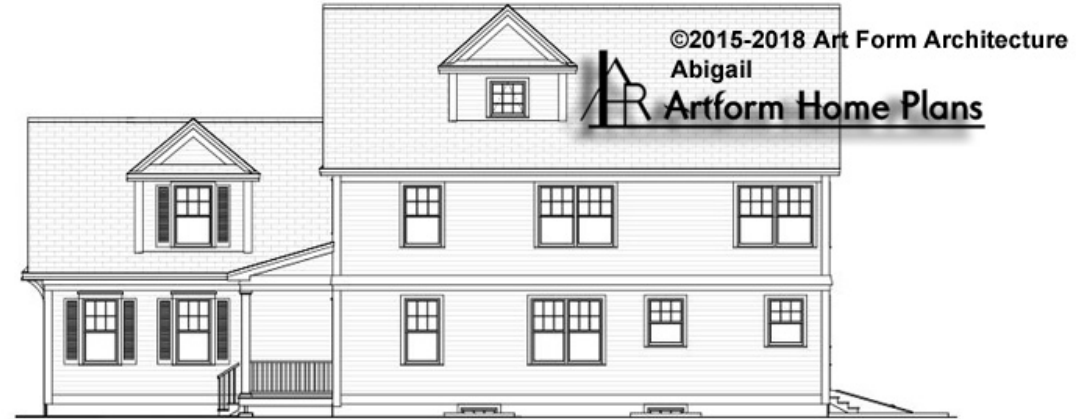


Art Form Architecture, LLC

ABIGAIL CLASSIC, 33X65 - RIGHT ELEVATION

754.124.v3 GL

—
Some features shown are optional. Your Purchase & Sale Agreement governs, whether items are labeled "optional" in this document or not.





Art Form Architecture, LLC

ABIGAIL CLASSIC, 33X65 - REAR ELEVATION

754.124.v3 GL

Some features shown are optional. Your Purchase & Sale Agreement governs, whether items are labeled "optional" in this document or not.





Art Form Architecture, LLC

ABIGAIL CLASSIC, 33X65 - LEFT ELEVATION

754.124.v3 GL

—
Some features shown are optional. Your Purchase & Sale Agreement governs, whether items are labeled "optional" in this document or not.

