



ABELARD 991.120 GL

Note - this is a slab-on-grade first floor, designed for a tough lot with height restriction. Pay attention to the heights!!!

In addition to our Terms and Conditions (the "Terms"), please be aware of the following:

Art Form Architecture, LLC ("Artform") requires that our Drawings be built substantially as designed. Artform will not be obligated by or liable for use of this design with markups as part of any builder agreement. While we attempt to accommodate where possible and reasonable, and where the changes do not denigrate our design, any and all changes to Drawings must be approved in writing by Artform. It is recommended that you have your Drawing updated by Artform prior to attaching any Drawing to any builder agreement. Artform shall not be responsible for the misuse of or unauthorized alterations to any of its Drawings.



Width 48.00 FT

Depth 28.00 FT

Height 29.90 FT

LIVING AREA		BEDROOMS		BATHROOMS	
	2762 FT		6		3.5
Main	2762 FT	Main	5	Main	3.5
Future	0 FT	Future	1	Future	0
2 nd Unit	0 FT	2 nd Unit	0	2 nd Unit	0

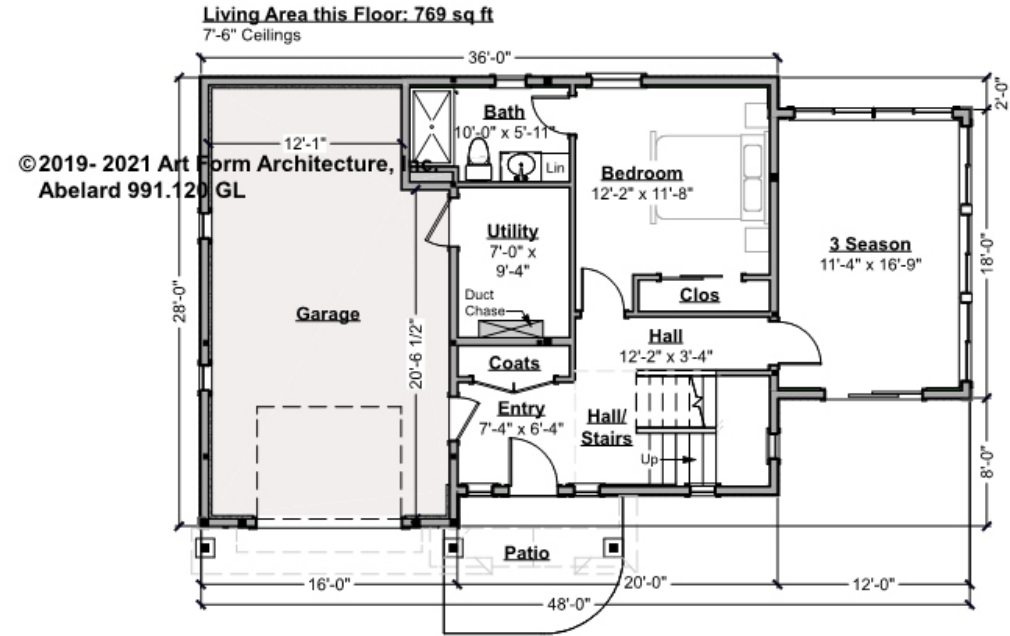


ABELARD - 1ST FLOOR

991.120 GL

*Note: Plan states 7'-6" Ceilings, web rounded to nearest Clg Ht Shown available, go by plans.

Some features shown are optional. Your Purchase & Sale Agreement governs, whether items are labeled "optional" in this document or not.



CLG HT SHOWN 7'-8" CLG HT POSSIBLE 9'-0"

* Major Change Fee, see website plan page for cost

F1 LIVING AREA		F1 BEDROOMS		F1 BATHROOMS	
	769 ^{FT}		2		1
Main	769.00 ^{FT}	Main	1.00	Main	1.00
Future	0.00 ^{FT}	Future	1.00	Future	0.00
2 nd Unit	0.00 ^{FT}	2 nd Unit	0.00	2 nd Unit	0.00



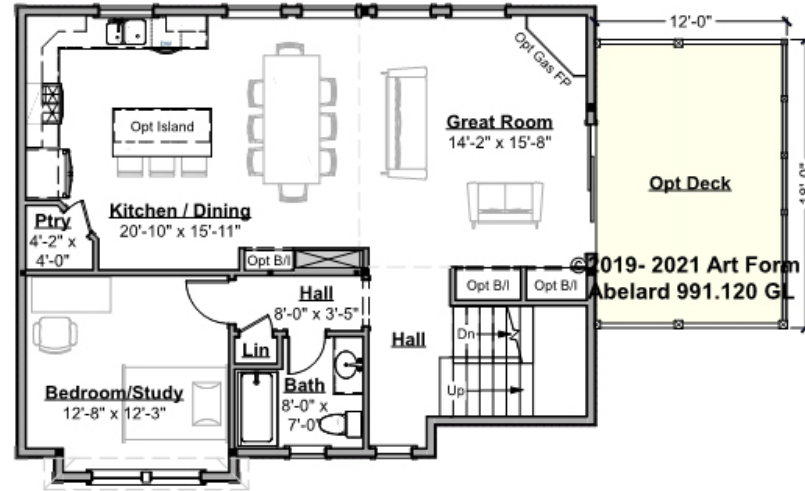
ABELARD - 2ND FLOOR

991.120 GL

*Note: Plan states 8'-6" Ceilings, web rounded to nearest Clg Ht Shown available, go by plans.

Some features shown are optional. Your Purchase & Sale Agreement governs, whether items are labeled "optional" in this document or not.

Living Area this Floor: 1005 sq ft
8'-6" Ceilings



© 2019- 2021 Art Form Architecture, Inc.
Abelard 991.120 GL

CLG HT SHOWN 8'-1" - 8'-11"

CLG HT POSSIBLE 9'-0"

* Major Change Fee, see website plan page for cost

F1 LIVING AREA	1005 ^{FT}	F1 BEDROOMS	1	F1 BATHROOMS	0.5
Main	1005.00 ^{FT}	Main	1.00	Main	0.50
Future	0.00 ^{FT}	Future	0.00	Future	0.00
2 nd Unit	0.00 ^{FT}	2 nd Unit	0.00	2 nd Unit	0.00



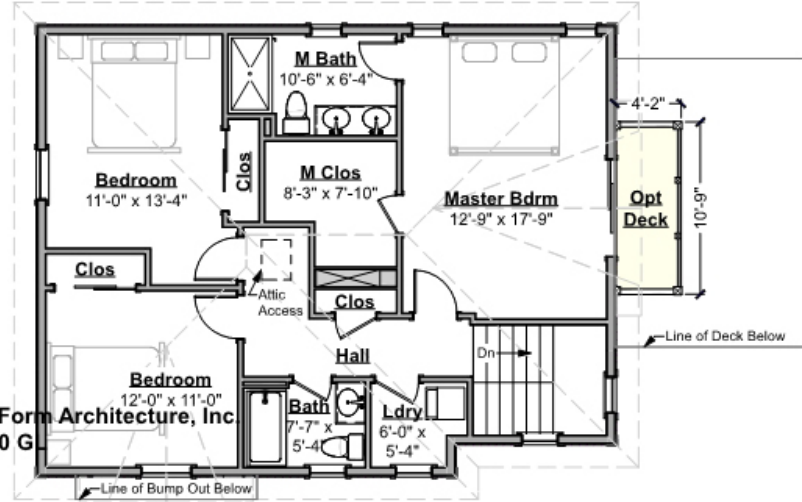
ABELARD - 3RD FLOOR

991.120 GL

*Note: Plan states 7'-9" Ceilings, web rounded to nearest Clg Ht Shown available, go by plans.

Some features shown are optional. Your Purchase & Sale Agreement governs, whether items are labeled "optional" in this document or not.

Living Area this Floor: 988 sq ft
7'-9" Ceilings



CLG HT SHOWN 8'-0"

CLG HT POSSIBLE 9'-0"

* Major Change Fee, see website plan page for cost

F1 LIVING AREA		F1 BEDROOMS		F1 BATHROOMS	
	988 ^{FT}		3		2
Main	988.00 ^{FT}	Main	3.00	Main	2.00
Future	0.00 ^{FT}	Future	0.00	Future	
2 nd Unit	0.00 ^{FT}	2 nd Unit	0.00	2 nd Unit	0.00



Art Form Architecture, LLC

ABELARD - FRONT ELEVATION

991.120 GL

Some features shown are optional. Your Purchase & Sale Agreement governs, whether items are labeled "optional" in this document or not.





Art Form Architecture, LLC

ABELARD - RIGHT ELEVATION

991.120 GL

Some features shown are optional. Your Purchase & Sale Agreement governs, whether items are labeled "optional" in this document or not.

© 2019- 2021 Art Form Architecture, Inc.
Abelard 991.120 GL





Art Form Architecture, LLC

ABELARD - REAR ELEVATION

991.120 GL

Some features shown are optional. Your Purchase & Sale Agreement governs, whether items are labeled "optional" in this document or not.





ABELARD - LEFT ELEVATION

991.120 GL

Some features shown are optional. Your Purchase & Sale Agreement governs, whether items are labeled "optional" in this document or not.

