



# ABANA CLASSIC

## 1063.124.v3 GL

In addition to our Terms and Conditions (the "Terms"), please be aware of the following:

Art Form Architecture, LLC ("Artform") requires that our Drawings be built substantially as designed. Artform will not be obligated by or liable for use of this design with markups as part of any builder agreement. While we attempt to accommodate where possible and reasonable, and where the changes do not denigrate our design, any and all changes to Drawings must be approved in writing by Artform. It is recommended that you have your Drawing updated by Artform prior to attaching any Drawing to any builder agreement. Artform shall not be responsible for the misuse of or unauthorized alterations to any of its Drawings.



Width 56.00 FT

Depth 45.50 FT

Height 32.66 FT

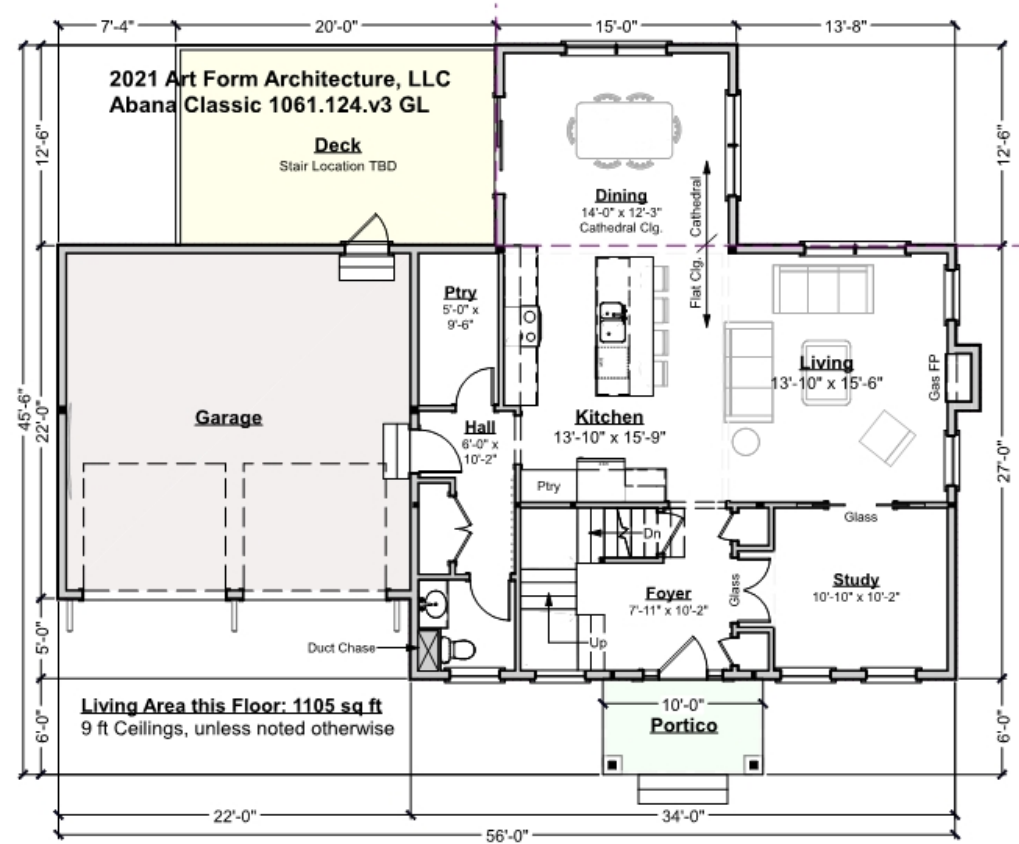
LIVING AREA		BEDROOMS		BATHROOMS	
	2507 FT <sup>2</sup>		5		2.5
Main	2507 FT <sup>2</sup>	Main	4	Main	2.5
Future	0 FT <sup>2</sup>	Future	1	Future	0
2 <sup>nd</sup> Unit	0 FT <sup>2</sup>	2 <sup>nd</sup> Unit	0	2 <sup>nd</sup> Unit	0



# ABANA CLASSIC - 1<sup>ST</sup> FLOOR

## 1063.124.v3 GL

Some features shown are optional. Your Purchase & Sale Agreement governs, whether items are labeled "optional" in this document or not.



CLG HT SHOWN 9'-0"    CLG HT POSSIBLE 8'-0"

\* Major Change Fee, see website plan page for cost

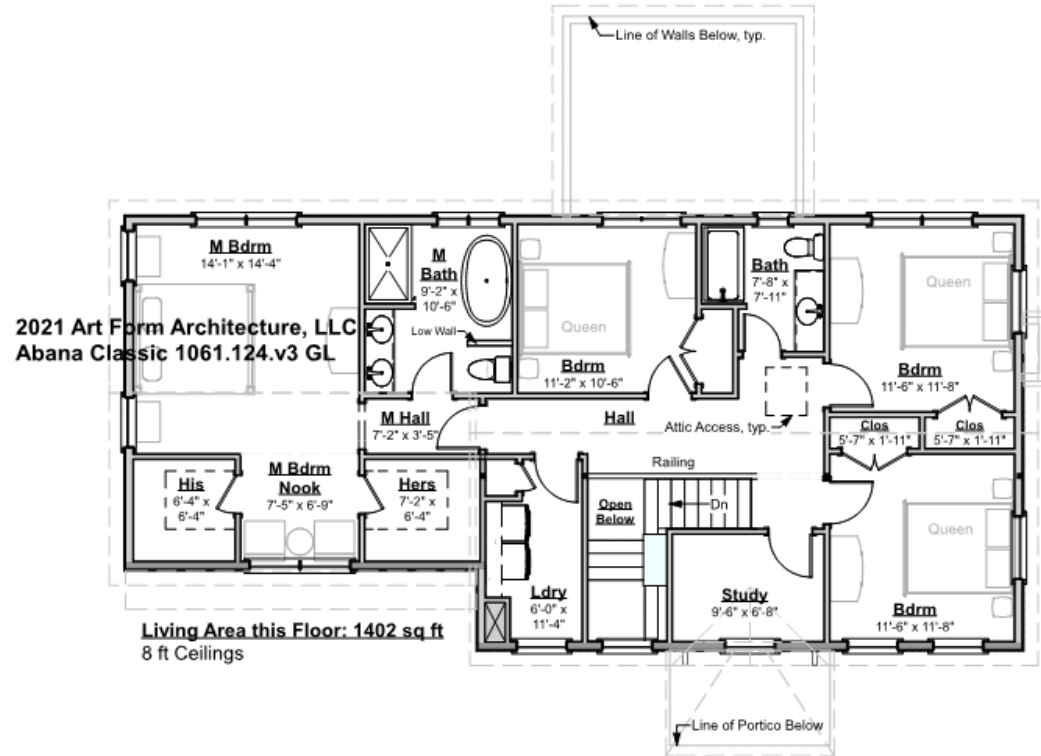
F1 LIVING AREA	1105 <sup>FT</sup>	F1 BEDROOMS	1	F1 BATHROOMS	0.5
Main	1105.00 <sup>FT</sup>	Main		Main	0.50
Future	FT	Future	1.00	Future	
2 <sup>nd</sup> Unit	FT	2 <sup>nd</sup> Unit		2 <sup>nd</sup> Unit	



# ABANA CLASSIC - 2<sup>ND</sup> FLOOR

## 1063.124.v3 GL

Some features shown are optional. Your Purchase & Sale Agreement governs, whether items are labeled "optional" in this document or not.



CLG HT SHOWN 8'-0"

CLG HT POSSIBLE 9'-0"

\* Major Change Fee, see website plan page for cost

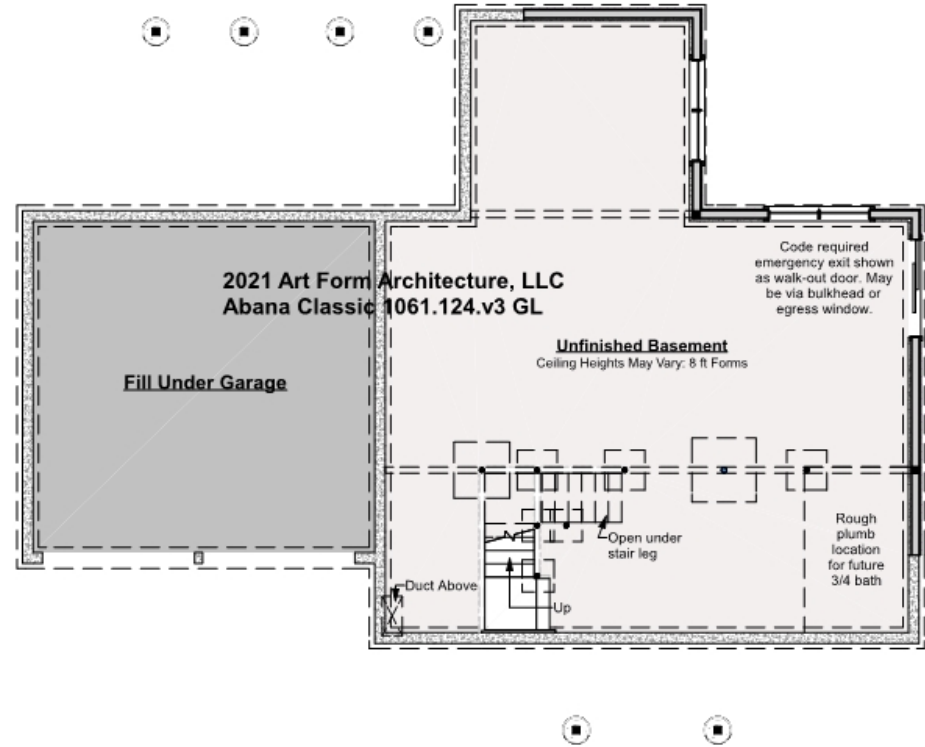
F1 LIVING AREA	1402 FT	F1 BEDROOMS	4	F1 BATHROOMS	2
Main	1402.00 FT	Main	4.00	Main	2.00
Future	FT	Future		Future	
2 <sup>nd</sup> Unit	FT	2 <sup>nd</sup> Unit		2 <sup>nd</sup> Unit	



# ABANA CLASSIC - BASEMENT

## 1063.124.v3 GL

Some features shown are optional. Your Purchase & Sale Agreement governs, whether items are labeled "optional" in this document or not.



**CLG HT SHOWN 7'-8"      CLG HT POSSIBLE 10' & Up**

*\* Major Change Fee, see website plan page for cost*

F1 LIVING AREA		0 <sup>FT</sup>	F1 BEDROOMS		0	F1 BATHROOMS		0
Main		FT	Main			Main		
Future		FT	Future			Future		
2 <sup>nd</sup> Unit		FT	2 <sup>nd</sup> Unit			2 <sup>nd</sup> Unit		



Art Form Architecture, LLC

## ABANA CLASSIC - FRONT ELEVATION

### 1063.124.v3 GL

Some features shown are optional. Your Purchase & Sale Agreement governs, whether items are labeled "optional" in this document or not.





Art Form Architecture, LLC

## ABANA CLASSIC - RIGHT ELEVATION 1063.124.v3 GL

Some features shown are optional. Your Purchase & Sale Agreement governs, whether items are labeled "optional" in this document or not.





## ABANA CLASSIC - REAR ELEVATION

### 1063.124.v3 GL

Some features shown are optional. Your Purchase & Sale Agreement governs, whether items are labeled "optional" in this document or not.

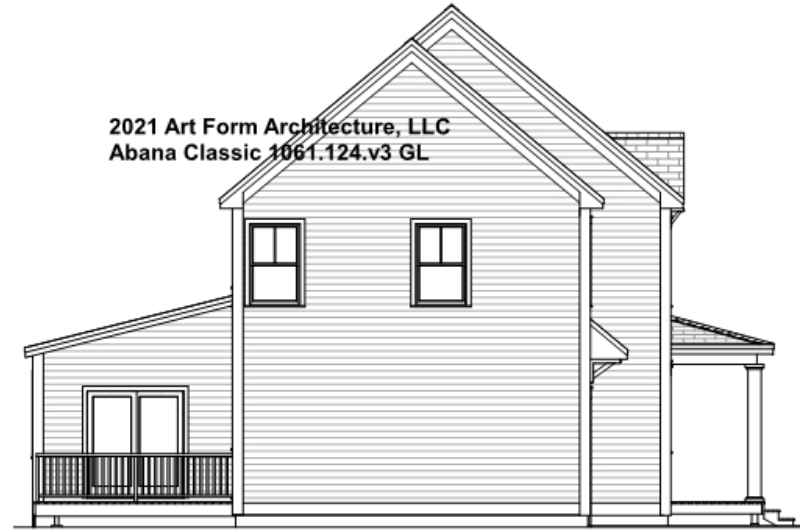




Art Form Architecture, LLC

## ABANA CLASSIC - LEFT ELEVATION 1063.124.v3 GL

Some features shown are optional. Your Purchase & Sale Agreement governs, whether items are labeled "optional" in this document or not.







Art Form Architecture, LLC

## ABANA CLASSIC - REAR RENDER 1063.124.v3 GL

Some features shown are optional. Your Purchase & Sale Agreement governs, whether items are labeled "optional" in this document or not.

