



Art Form Architecture, LLC

## TWIN PEAKS

### 442.124.v12 GL

In addition to our Terms and Conditions (the "Terms"), please be aware of the following:

Art Form Architecture, LLC ("Artform") requires that our Drawings be built substantially as designed. Artform will not be obligated by or liable for use of this design with markups as part of any builder agreement. While we attempt to accommodate where possible and reasonable, and where the changes do not denigrate our design, any and all changes to Drawings must be approved in writing by Artform. It is recommended that you have your Drawing updated by Artform prior to attaching any Drawing to any builder agreement. Artform shall not be responsible for the misuse of or unauthorized alterations to any of its Drawings.



Width 82.29 <sup>FT</sup>

Depth 68.40 <sup>FT</sup>

Height 28.33 <sup>FT</sup>

LIVING AREA		BEDROOMS		BATHROOMS	
	3501 <sup>FT</sup>		5		3.5
Main	3501 <sup>FT</sup>	Main	5	Main	3.5
Future	0 <sup>FT</sup>	Future	0	Future	0
2 <sup>nd</sup> Unit	0 <sup>FT</sup>	2 <sup>nd</sup> Unit	0	2 <sup>nd</sup> Unit	0

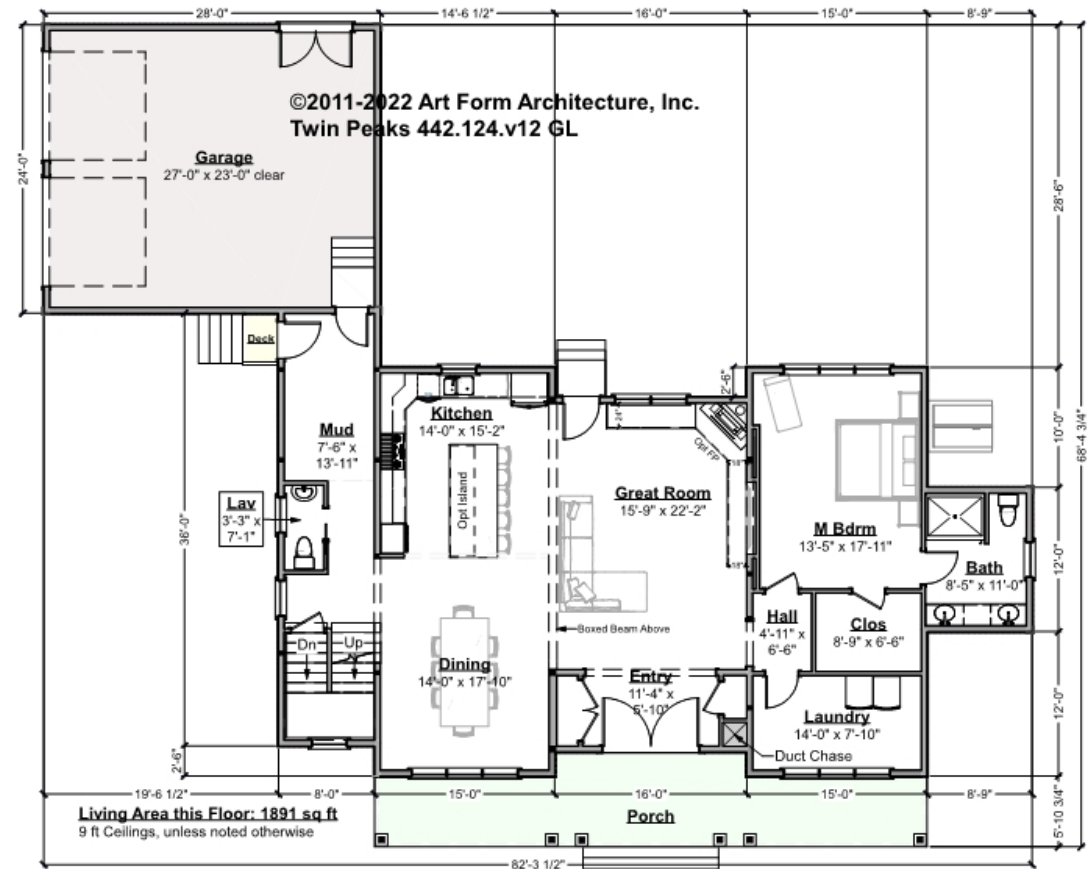


Art Form Architecture, LLC

## TWIN PEAKS - 1<sup>ST</sup> FLOOR

### 442.124.v12 GL

Some features shown are optional. Your Purchase & Sale Agreement governs, whether items are labeled "optional" in this document or not.



CLG HT SHOWN 9'-0"

CLG HT POSSIBLE 8'-0"

\* Major Change Fee, see website plan page for cost

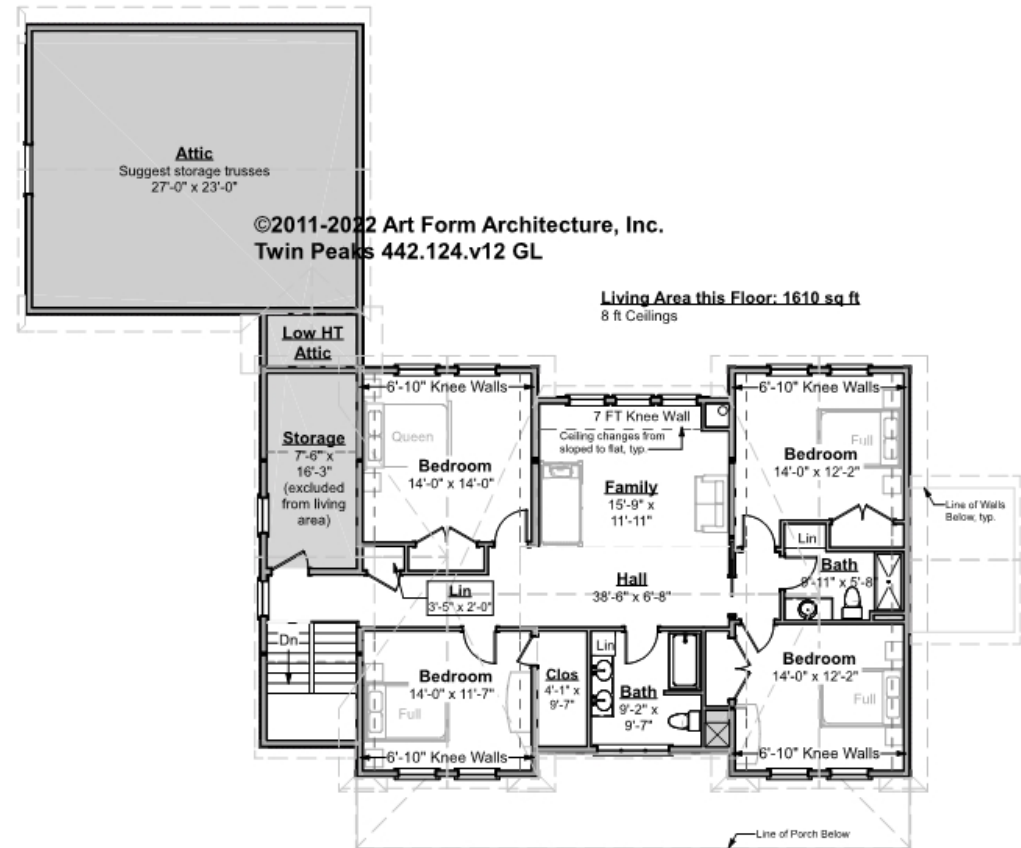
F1 LIVING AREA	1891 FT	F1 BEDROOMS	1	F1 BATHROOMS	1.5
Main	1891.00 FT	Main	1.00	Main	1.50
Future	FT	Future		Future	
2 <sup>nd</sup> Unit	FT	2 <sup>nd</sup> Unit		2 <sup>nd</sup> Unit	



## TWIN PEAKS - 2<sup>ND</sup> FLOOR

442.124.v12 GL

Some features shown are optional. Your Purchase & Sale Agreement governs, whether items are labeled "optional" in this document or not.



CLG HT SHOWN 8'-0"

CLG HT POSSIBLE 8'-0"

\* Major Change Fee, see website plan page for cost

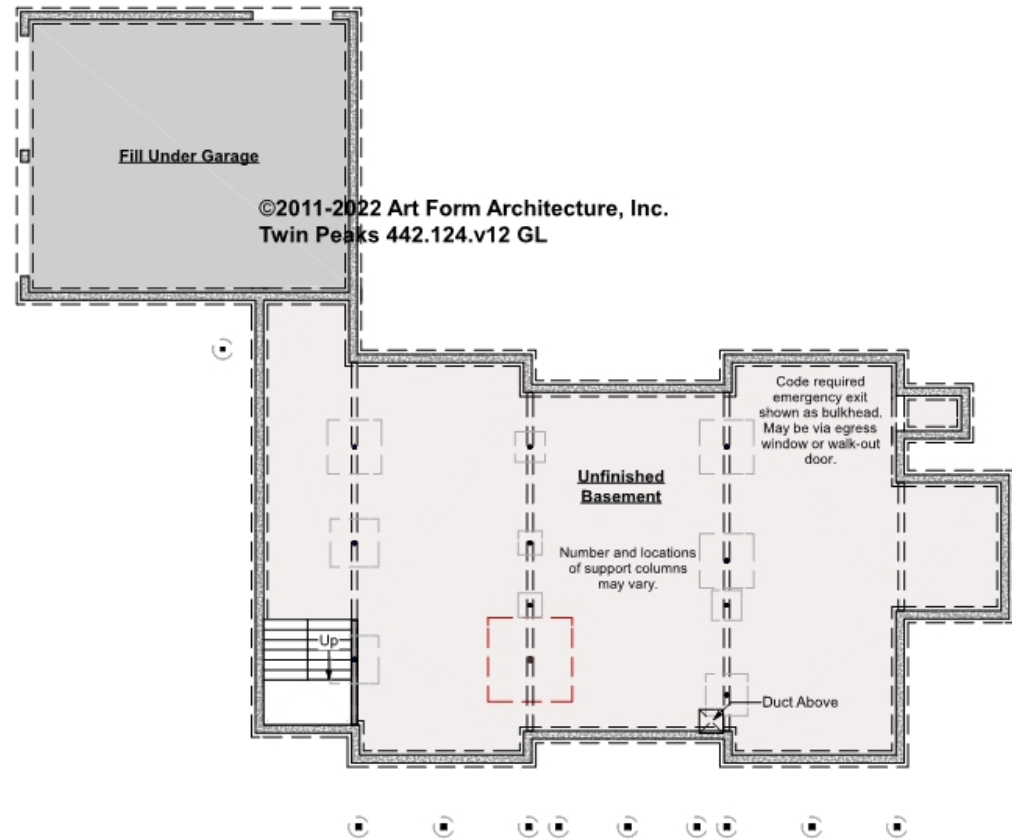
F1 LIVING AREA	1610 FT	F1 BEDROOMS	4	F1 BATHROOMS	2
Main	1610.00 FT	Main	4.00	Main	2.00
Future	FT	Future		Future	
2 <sup>nd</sup> Unit	FT	2 <sup>nd</sup> Unit		2 <sup>nd</sup> Unit	



## TWIN PEAKS - BASEMENT

442.124.v12 GL

Some features shown are optional. Your Purchase & Sale Agreement governs, whether items are labeled "optional" in this document or not.



CLG HT SHOWN 7'-8"

CLG HT POSSIBLE 9'-0"

\* Major Change Fee, see website plan page for cost

F1 LIVING AREA		0 FT	F1 BEDROOMS		0	F1 BATHROOMS		0
Main		FT	Main			Main		
Future		FT	Future			Future		
2 <sup>nd</sup> Unit		FT	2 <sup>nd</sup> Unit			2 <sup>nd</sup> Unit		

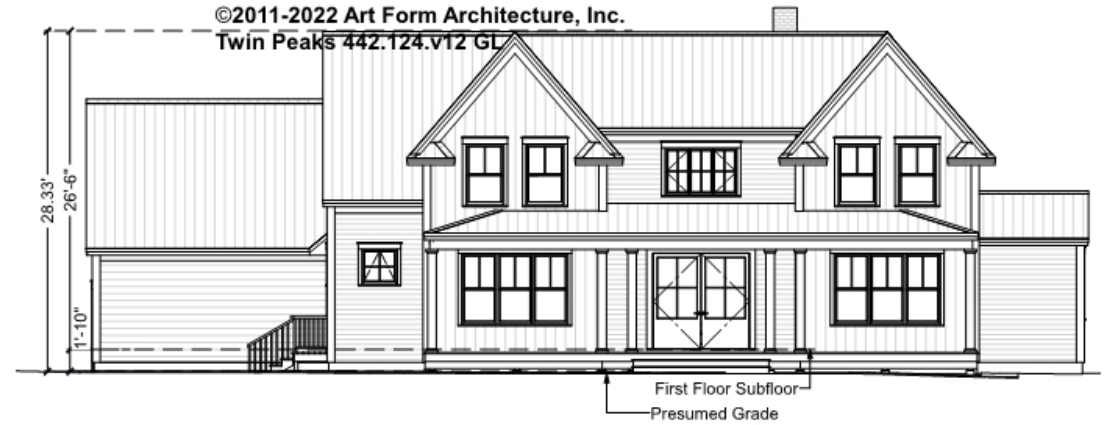


Art Form Architecture, LLC

## TWIN PEAKS - FRONT ELEVATION

### 442.124.v12 GL

Some features shown are optional. Your Purchase & Sale Agreement governs, whether items are labeled "optional" in this document or not.





Art Form Architecture, LLC

## TWIN PEAKS - RIGHT ELEVATION

### 442.124.v12 GL

Some features shown are optional. Your Purchase & Sale Agreement governs, whether items are labeled "optional" in this document or not.





Art Form Architecture, LLC

## TWIN PEAKS - REAR ELEVATION

442.124.v12 GL

Some features shown are optional. Your Purchase & Sale Agreement governs, whether items are labeled "optional" in this document or not.





Art Form Architecture, LLC

## TWIN PEAKS - LEFT ELEVATION

442.124.v12 GL

Some features shown are optional. Your Purchase & Sale Agreement governs, whether items are labeled "optional" in this document or not.

