



## SWEET CHERRY PIE

### 481.124.v20 GR

In addition to our Terms and Conditions (the "Terms"), please be aware of the following:

Art Form Architecture, LLC ("Artform") requires that our Drawings be built substantially as designed. Artform will not be obligated by or liable for use of this design with markups as part of any builder agreement. While we attempt to accommodate where possible and reasonable, and where the changes do not denigrate our design, any and all changes to Drawings must be approved in writing by Artform. It is recommended that you have your Drawing updated by Artform prior to attaching any Drawing to any builder agreement. Artform shall not be responsible for the misuse of or unauthorized alterations to any of its Drawings.



Width 44.00 FT

Depth 40.25 FT

Height 28.16 FT

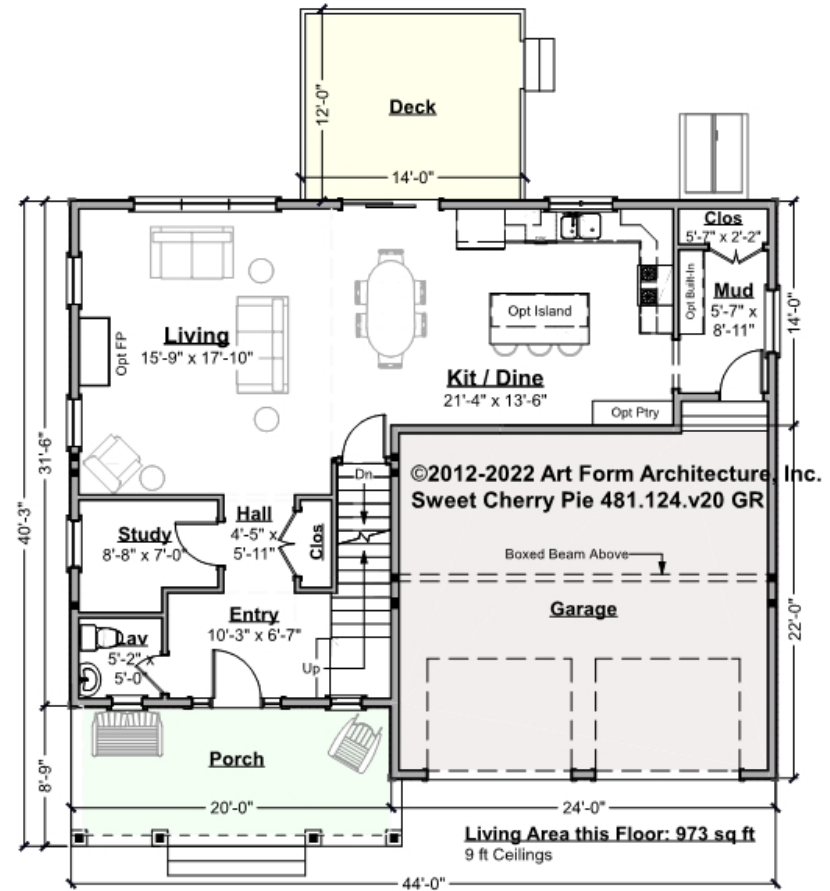
LIVING AREA		BEDROOMS		BATHROOMS	
	2415 FT		4		2.5
Main	2415 FT	Main	4	Main	2.5
Future	0 FT	Future	0	Future	0
2 <sup>nd</sup> Unit	0 FT	2 <sup>nd</sup> Unit	0	2 <sup>nd</sup> Unit	0



# SWEET CHERRY PIE - 1<sup>ST</sup> FLOOR

## 481.124.v20 GR

Some features shown are optional. Your Purchase & Sale Agreement governs, whether items are labeled "optional" in this document or not.



CLG HT SHOWN 9'-0"      CLG HT POSSIBLE 8'-0"

\* Major Change Fee, see website plan page for cost

F1 LIVING AREA	973 <sup>FT</sup>	F1 BEDROOMS	0	F1 BATHROOMS	0.5
Main	973.00 <sup>FT</sup>	Main		Main	0.50
Future	FT	Future		Future	
2 <sup>nd</sup> Unit	FT	2 <sup>nd</sup> Unit		2 <sup>nd</sup> Unit	

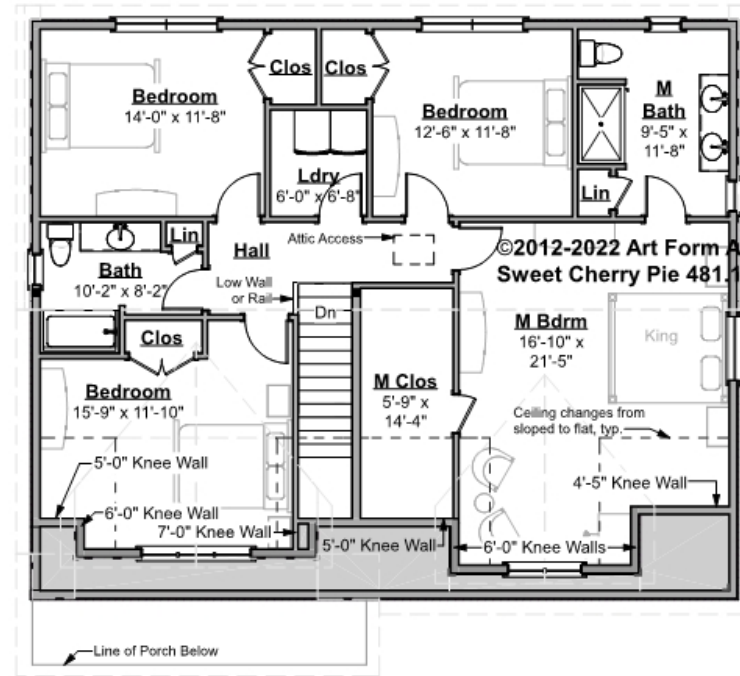


# SWEET CHERRY PIE - 2<sup>ND</sup> FLOOR

481.124.v20 GR

Some features shown are optional. Your Purchase & Sale Agreement governs, whether items are labeled "optional" in this document or not.

**Living Area this Floor: 1442 sq ft**  
8 ft Ceilings



CLG HT SHOWN 8'-0"

CLG HT POSSIBLE 8'-0"

\* Major Change Fee, see website plan page for cost

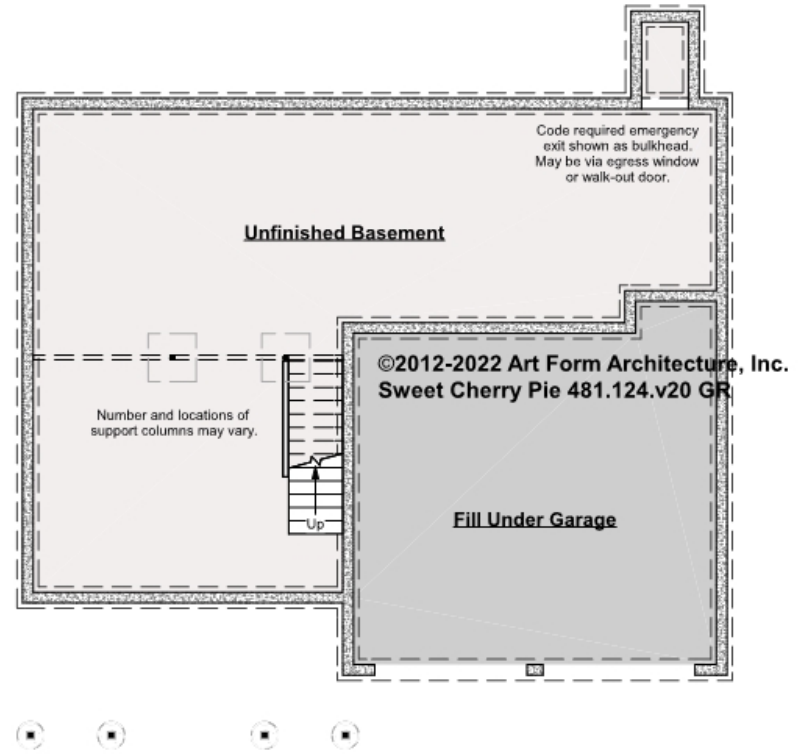
F1 LIVING AREA	1442 FT	F1 BEDROOMS	4	F1 BATHROOMS	2
Main	1442.00 FT	Main	4.00	Main	2.00
Future	FT	Future		Future	
2 <sup>nd</sup> Unit	FT	2 <sup>nd</sup> Unit		2 <sup>nd</sup> Unit	



# SWEET CHERRY PIE - BASEMENT

## 481.124.v20 GR

Some features shown are optional. Your Purchase & Sale Agreement governs, whether items are labeled "optional" in this document or not.



CLG HT SHOWN 7'-8"      CLG HT POSSIBLE 9'-0"

\* Major Change Fee, see website plan page for cost

F1 LIVING AREA		0 FT		F1 BEDROOMS		0		F1 BATHROOMS		0	
Main	FT			Main				Main			
Future	FT			Future				Future			
2 <sup>nd</sup> Unit	FT			2 <sup>nd</sup> Unit				2 <sup>nd</sup> Unit			



Art Form Architecture, LLC

## SWEET CHERRY PIE - FRONT ELEVATION

481.124.v20 GR

Some features shown are optional. Your Purchase & Sale Agreement governs, whether items are labeled "optional" in this document or not.





Art Form Architecture, LLC

## SWEET CHERRY PIE - RIGHT ELEVATION

481.124.v20 GR

Some features shown are optional. Your Purchase & Sale Agreement governs, whether items are labeled "optional" in this document or not.





Art Form Architecture, LLC

## SWEET CHERRY PIE - REAR ELEVATION

481.124.v20 GR

—  
Some features shown are optional. Your Purchase & Sale Agreement governs, whether items are labeled "optional" in this document or not.







Art Form Architecture, LLC

## SWEET CHERRY PIE - LEFT ELEVATION

481.124.v20 GR

—  
Some features shown are optional. Your Purchase & Sale Agreement governs, whether items are labeled "optional" in this document or not.

