



SKIPPER CLASSIC

389.124.v9 GR

Note - second floor framing is 14" deep i-joists - necessary to achieve these spans.

Reverse plan available.

In addition to our Terms and Conditions (the "Terms"), please be aware of the following:

Art Form Architecture, LLC ("Artform") requires that our Drawings be built substantially as designed. Artform will not be obligated by or liable for use of this design with markups as part of any builder agreement. While we attempt to accommodate where possible and reasonable, and where the changes do not denigrate our design, any and all changes to Drawings must be approved in writing by Artform. It is recommended that you have your Drawing updated by Artform prior to attaching any Drawing to any builder agreement. Artform shall not be responsible for the misuse of or unauthorized alterations to any of its Drawings.



©2011-2022 Art Form Architecture, Inc.
Skipper Classic 389.124.v9 GR

Width 80.38 FT

Depth 51.50 FT

Height 29.92 FT

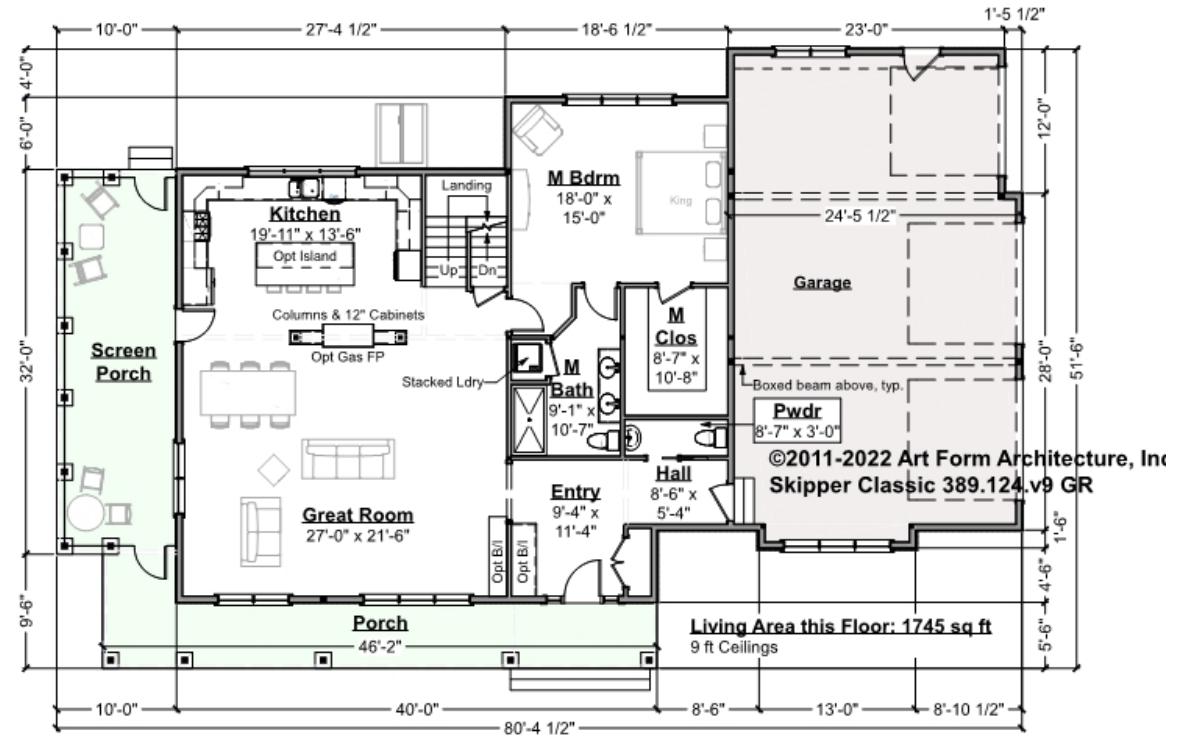
LIVING AREA		BEDROOMS		BATHROOMS	
	3700 FT		5		3.5
Main	3700 FT	Main	4	Main	3.5
Future	0 FT	Future	1	Future	0
2 nd Unit	0 FT	2 nd Unit	0	2 nd Unit	0



SKIPPER CLASSIC - 1ST FLOOR

389.124.v9 GR

Some features shown are optional. Your Purchase & Sale Agreement governs, whether items are labeled "optional" in this document or not.



CLG HT SHOWN 9'-0" CLG HT POSSIBLE 8'-0"

* Major Change Fee, see website plan page for cost

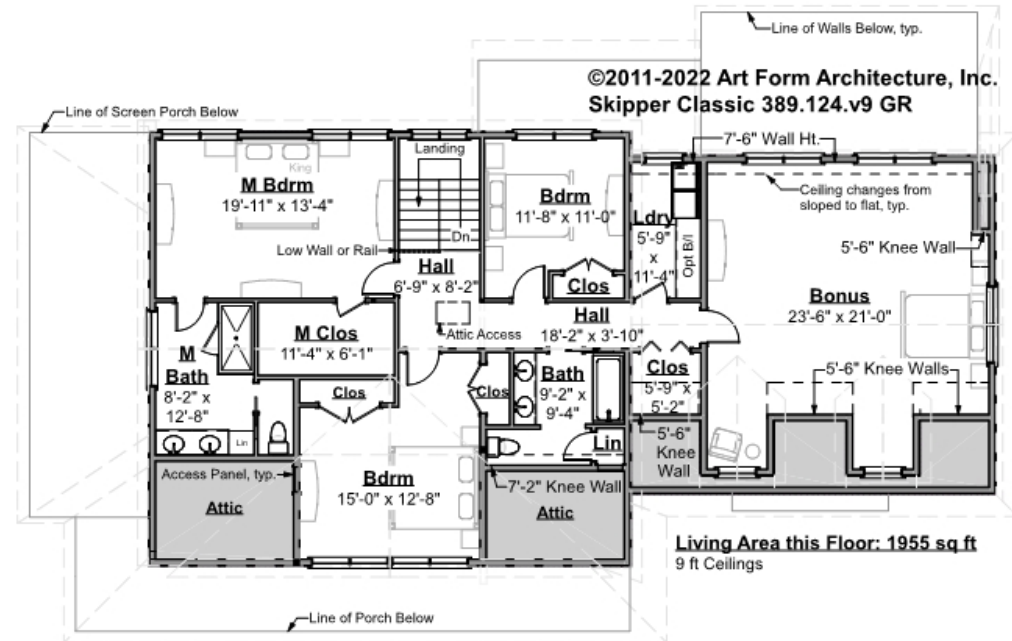
F1 LIVING AREA	1745 ^{FT}	F1 BEDROOMS	1	F1 BATHROOMS	1.5
Main	1745.00 ^{FT}	Main	1.00	Main	1.50
Future	0.00 ^{FT}	Future	0.00	Future	0.00
2 nd Unit	0.00 ^{FT}	2 nd Unit	0.00	2 nd Unit	0.00



SKIPPER CLASSIC - 2ND FLOOR

389.124.v9 GR

Some features shown are optional. Your Purchase & Sale Agreement governs, whether items are labeled "optional" in this document or not.



CLG HT SHOWN 9'-0" CLG HT POSSIBLE 8'-0"

* Major Change Fee, see website plan page for cost

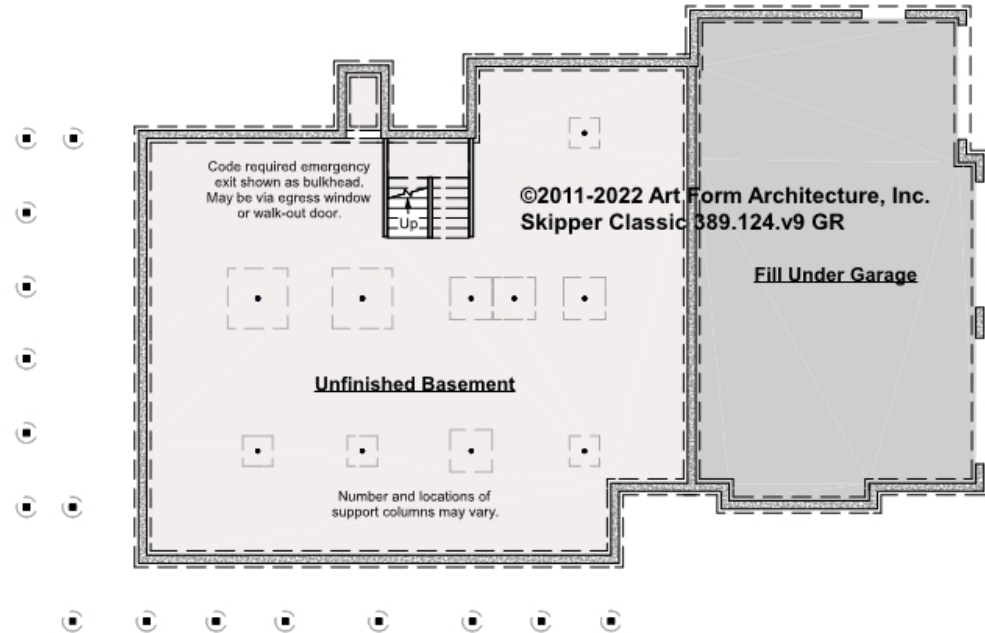
F1 LIVING AREA		F1 BEDROOMS		F1 BATHROOMS	
Main	1955.00 ^{FT}	Main	3.00	Main	2.00
Future	0.00 ^{FT}	Future	1.00	Future	0.00
2 nd Unit	0.00 ^{FT}	2 nd Unit	0.00	2 nd Unit	0.00



SKIPPER CLASSIC - BASEMENT

389.124.v9 GR

Some features shown are optional. Your Purchase & Sale Agreement governs, whether items are labeled "optional" in this document or not.



CLG HT SHOWN 7'-8" CLG HT POSSIBLE 9'-0"

* Major Change Fee, see website plan page for cost

F1 LIVING AREA	0 FT	F1 BEDROOMS	0	F1 BATHROOMS	0
Main	0.00 FT	Main	0.00	Main	0.00
Future	0.00 FT	Future	0.00	Future	0.00
2 nd Unit	0.00 FT	2 nd Unit	0.00	2 nd Unit	0.00

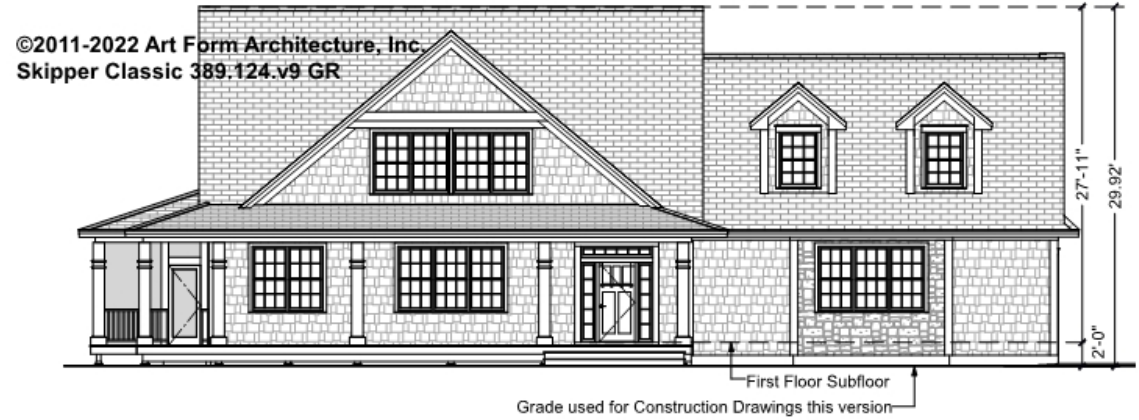


Art Form Architecture, LLC

SKIPPER CLASSIC - FRONT ELEVATION

389.124.v9 GR

Some features shown are optional. Your Purchase & Sale Agreement governs, whether items are labeled "optional" in this document or not.





Art Form Architecture, LLC

SKIPPER CLASSIC - RIGHT ELEVATION

389.124.v9 GR

—
Some features shown are optional. Your Purchase & Sale Agreement governs, whether items are labeled "optional" in this document or not.





Art Form Architecture, LLC

SKIPPER CLASSIC - REAR ELEVATION

389.124.v9 GR

Some features shown are optional. Your Purchase & Sale Agreement governs, whether items are labeled "optional" in this document or not.





Art Form Architecture, LLC

SKIPPER CLASSIC - LEFT ELEVATION

389.124.v9 GR

Some features shown are optional. Your Purchase & Sale Agreement governs, whether items are labeled "optional" in this document or not.





Art Form Architecture, LLC

SKIPPER CLASSIC - REAR RENDER 389.124.v9 GR

Some features shown are optional. Your Purchase & Sale Agreement governs, whether items are labeled "optional" in this document or not.

