



# SKIPPER CLASSIC

## 389.124.v9 GL

Reverse plan available.

In addition to our Terms and Conditions (the "Terms"), please be aware of the following:

Art Form Architecture, LLC ("Artform") requires that our Drawings be built substantially as designed. Artform will not be obligated by or liable for use of this design with markups as part of any builder agreement. While we attempt to accommodate where possible and reasonable, and where the changes do not denigrate our design, any and all changes to Drawings must be approved in writing by Artform. It is recommended that you have your Drawing updated by Artform prior to attaching any Drawing to any builder agreement. Artform shall not be responsible for the misuse of or unauthorized alterations to any of its Drawings.



Width 80.38 FT

Depth 51.50 FT

Height 29.92 FT

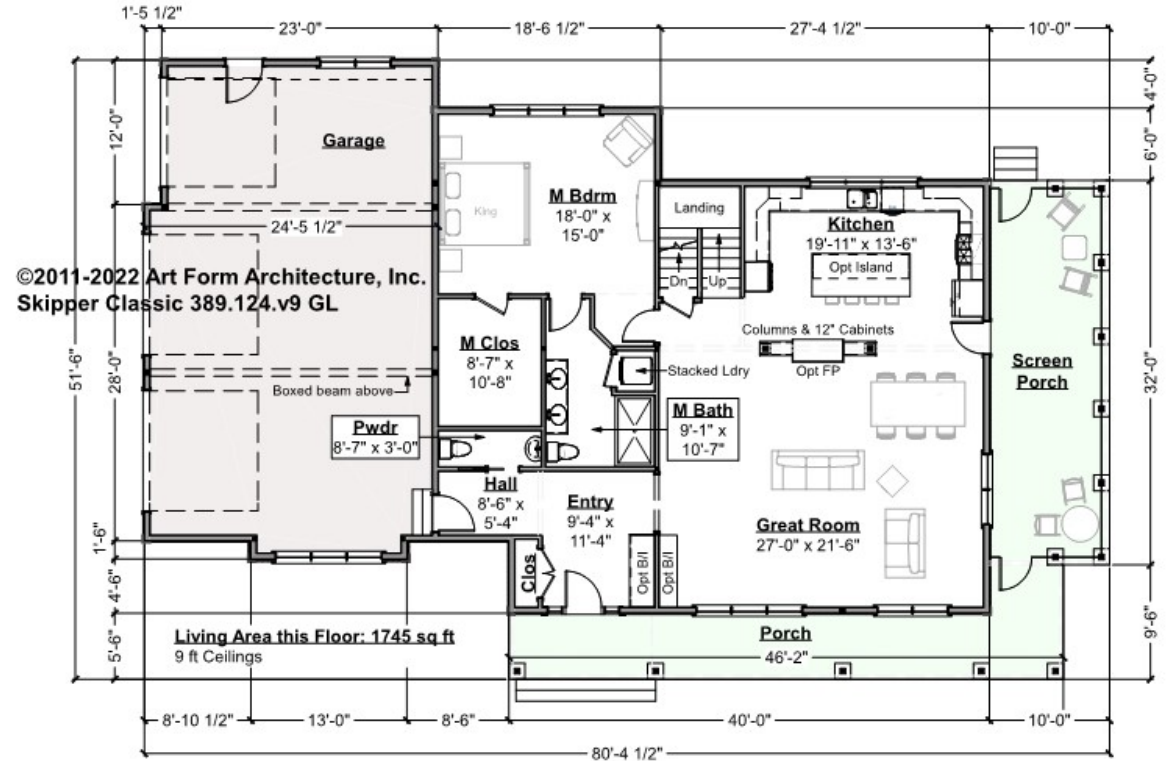
LIVING AREA		BEDROOMS		BATHROOMS	
	3699 FT <sup>2</sup>		5		3.5
Main	3699 FT <sup>2</sup>	Main	4	Main	3.5
Future	0 FT <sup>2</sup>	Future	1	Future	0
2 <sup>nd</sup> Unit	0 FT <sup>2</sup>	2 <sup>nd</sup> Unit	0	2 <sup>nd</sup> Unit	0



# SKIPPER CLASSIC - 1<sup>ST</sup> FLOOR

## 389.124.v9 GL

Some features shown are optional. Your Purchase & Sale Agreement governs, whether items are labeled "optional" in this document or not.



CLG HT SHOWN 9'-0"      CLG HT POSSIBLE 8'-0"

\* Major Change Fee, see website plan page for cost

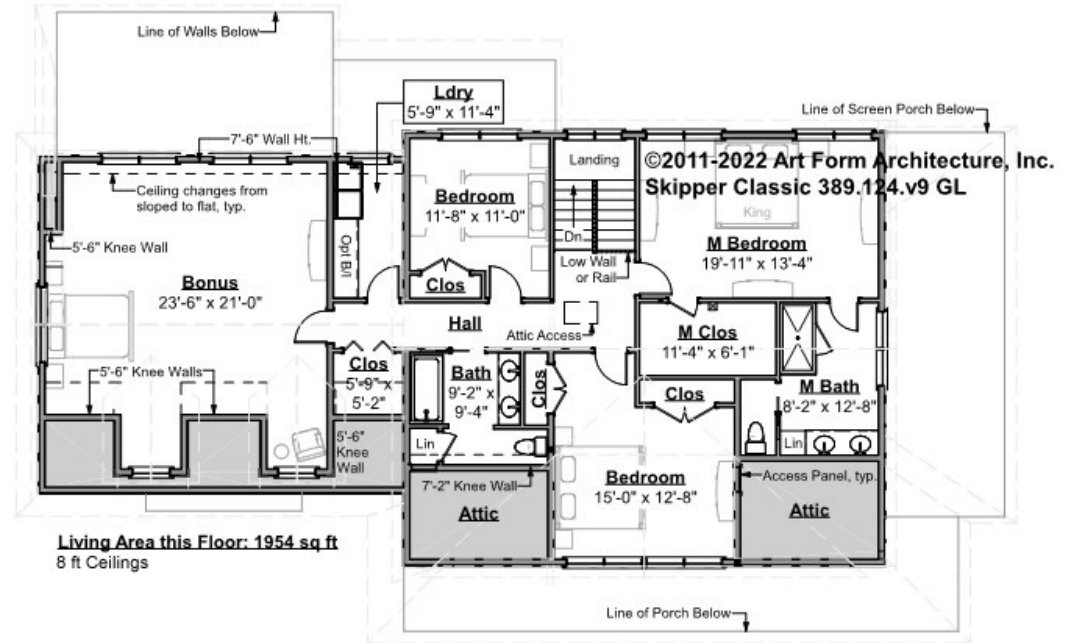
F1 LIVING AREA	1745 FT	F1 BEDROOMS	1	F1 BATHROOMS	1.5
Main	1745.00 FT	Main	1.00	Main	1.50
Future	FT	Future		Future	
2 <sup>nd</sup> Unit	FT	2 <sup>nd</sup> Unit		2 <sup>nd</sup> Unit	



# SKIPPER CLASSIC - 2<sup>ND</sup> FLOOR

## 389.124.v9 GL

Some features shown are optional. Your Purchase & Sale Agreement governs, whether items are labeled "optional" in this document or not.



**Living Area this Floor: 1954 sq ft**  
8 ft Ceilings

**CLG HT SHOWN 8'-0"      CLG HT POSSIBLE 9'-0"**

*\* Major Change Fee, see website plan page for cost*

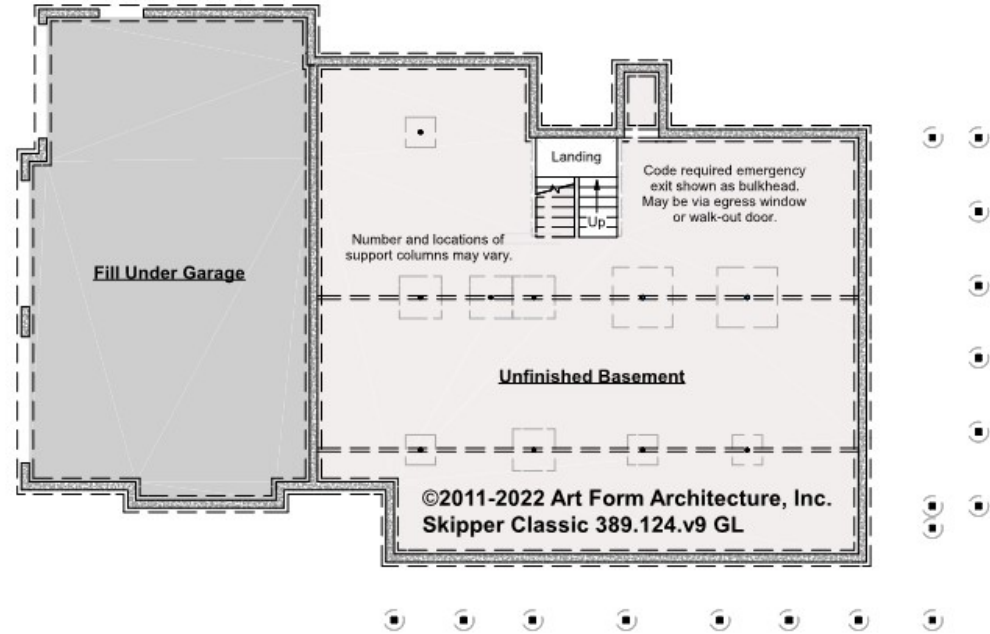
F1 LIVING AREA	1954 FT	F1 BEDROOMS	4	F1 BATHROOMS	2
Main	1954.00 FT	Main	3.00	Main	2.00
Future	FT	Future	1.00	Future	
2 <sup>nd</sup> Unit	FT	2 <sup>nd</sup> Unit		2 <sup>nd</sup> Unit	



# SKIPPER CLASSIC - BASEMENT

389.124.v9 GL

Some features shown are optional. Your Purchase & Sale Agreement governs, whether items are labeled "optional" in this document or not.



CLG HT SHOWN 7'-8"      CLG HT POSSIBLE 9'-0"

\* Major Change Fee, see website plan page for cost

F1 LIVING AREA		F1 BEDROOMS		F1 BATHROOMS	
	0 FT		0		0
Main	FT	Main		Main	
Future	FT	Future		Future	
2 <sup>nd</sup> Unit	FT	2 <sup>nd</sup> Unit		2 <sup>nd</sup> Unit	



Art Form Architecture, LLC

## SKIPPER CLASSIC - FRONT ELEVATION

389.124.v9 GL

Some features shown are optional. Your Purchase & Sale Agreement governs, whether items are labeled "optional" in this document or not.





Art Form Architecture, LLC

## SKIPPER CLASSIC - RIGHT ELEVATION

389.124.v9 GL

Some features shown are optional. Your Purchase & Sale Agreement governs, whether items are labeled "optional" in this document or not.





Art Form Architecture, LLC

## SKIPPER CLASSIC - REAR ELEVATION

### 389.124.v9 GL

Some features shown are optional. Your Purchase & Sale Agreement governs, whether items are labeled "optional" in this document or not.





Art Form Architecture, LLC

## SKIPPER CLASSIC - LEFT ELEVATION

### 389.124.v9 GL

Some features shown are optional. Your Purchase & Sale Agreement governs, whether items are labeled "optional" in this document or not.







Art Form Architecture, LLC

## SKIPPER CLASSIC - REAR RENDER

### 389.124.v9 GL

Some features shown are optional. Your Purchase & Sale Agreement governs, whether items are labeled "optional" in this document or not.

