



MERLOT COTTAGE

989.124.v11 GR

In addition to our Terms and Conditions (the "Terms"), please be aware of the following:

Art Form Architecture, LLC ("Artform") requires that our Drawings be built substantially as designed. Artform will not be obligated by or liable for use of this design with markups as part of any builder agreement. While we attempt to accommodate where possible and reasonable, and where the changes do not denigrate our design, any and all changes to Drawings must be approved in writing by Artform. It is recommended that you have your Drawing updated by Artform prior to attaching any Drawing to any builder agreement. Artform shall not be responsible for the misuse of or unauthorized alterations to any of its Drawings.



Width 58.00 FT

Depth 66.00 FT

Height 29.58 FT

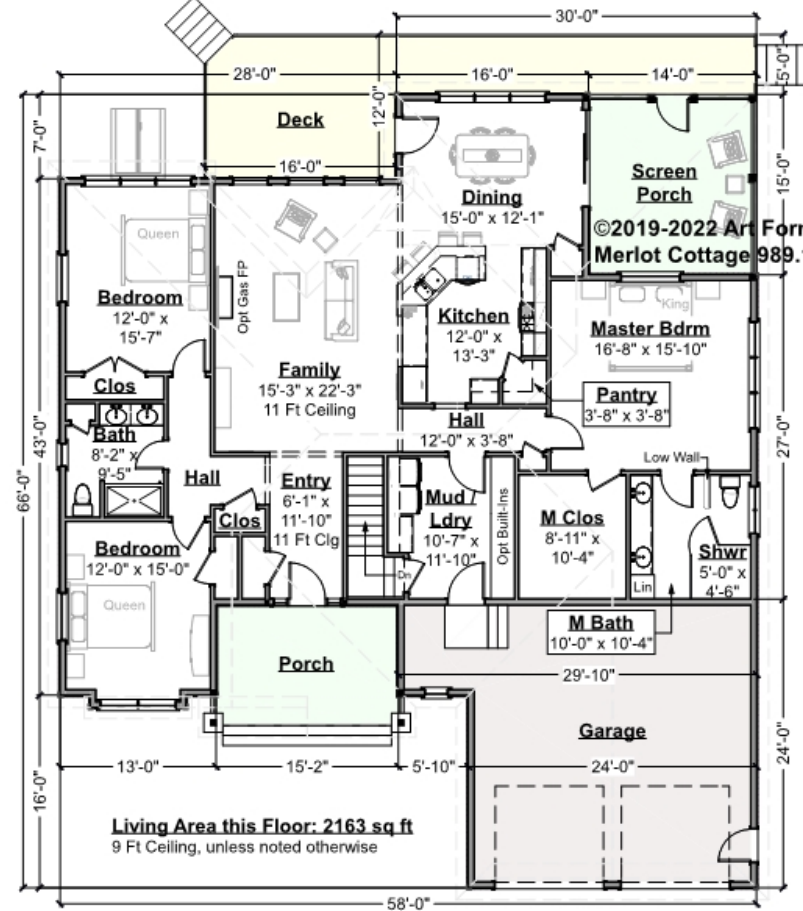
LIVING AREA		BEDROOMS		BATHROOMS	
	2163 FT		3		2
Main	2163 FT	Main	3	Main	2
Future	0 FT	Future	0	Future	0
2 nd Unit	0 FT	2 nd Unit	0	2 nd Unit	0



MERLOT COTTAGE - 1ST FLOOR

989.124.v11 GR

Some features shown are optional. Your Purchase & Sale Agreement governs, whether items are labeled "optional" in this document or not.



©2019-2022 Art Form Architecture, Inc.
Merlot Cottage 989.124.v11 GR

CLG HT SHOWN 9'-0" CLG HT POSSIBLE 8'-0"

* Major Change Fee, see website plan page for cost

F1 LIVING AREA	2163 FT	F1 BEDROOMS	3	F1 BATHROOMS	2
Main	2163.00 FT	Main	3.00	Main	2.00
Future	FT	Future		Future	
2 nd Unit	FT	2 nd Unit		2 nd Unit	



Art Form Architecture, LLC

MERLOT COTTAGE - 1ST FLOOR

989.124.v11 GR

Some features shown are optional. Your Purchase & Sale Agreement governs, whether items are labeled "optional" in this document or not.



Screen Porch and Kitchen from Dining - Additional Image



Art Form Architecture, LLC

MERLOT COTTAGE - 1ST FLOOR

989.124.v11 GR

—
Some features shown are optional. Your Purchase & Sale Agreement governs, whether items are labeled "optional" in this document or not.



Kitchen and Dining - Additional Image



Art Form Architecture, LLC

MERLOT COTTAGE - 1ST FLOOR

989.124.v11 GR

Some features shown are optional. Your Purchase & Sale Agreement governs, whether items are labeled "optional" in this document or not.



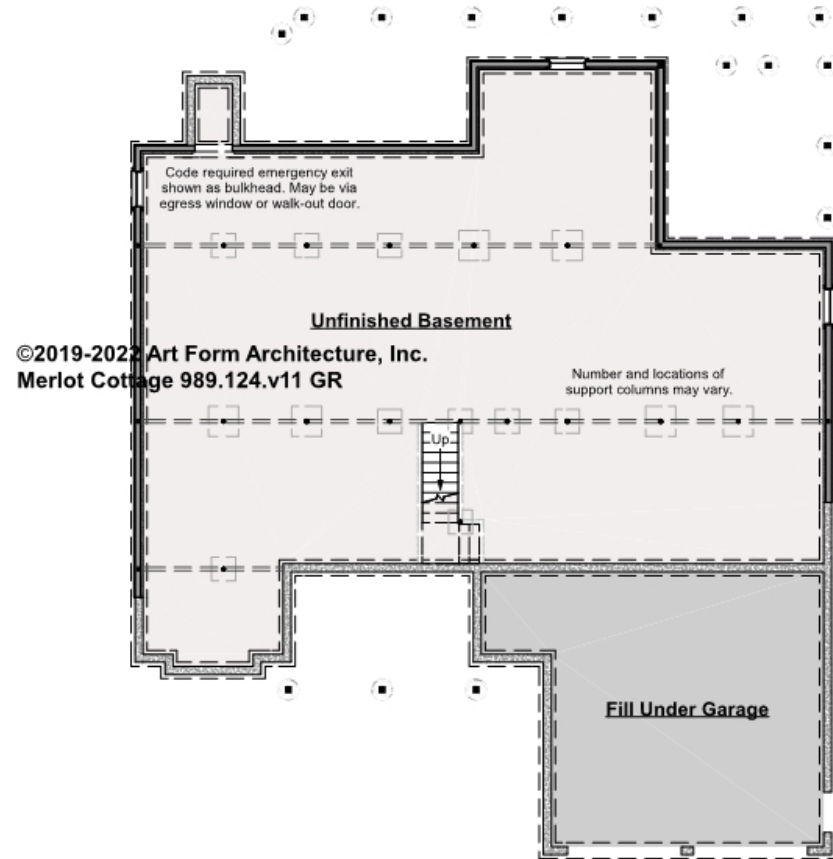
Kitchen and Dining from Family Room - Additional Image



MERLOT COTTAGE - BASEMENT

989.124.v11 GR

Some features shown are optional. Your Purchase & Sale Agreement governs, whether items are labeled "optional" in this document or not.



©2019-2022 Art Form Architecture, Inc.
Merlot Cottage 989.124.v11 GR

CLG HT SHOWN 7'-8" CLG HT POSSIBLE 9'-0"

* Major Change Fee, see website plan page for cost

F1 LIVING AREA		F1 BEDROOMS		F1 BATHROOMS	
0	FT	0		0	
Main	FT	Main		Main	
Future	FT	Future		Future	
2 nd Unit	FT	2 nd Unit		2 nd Unit	

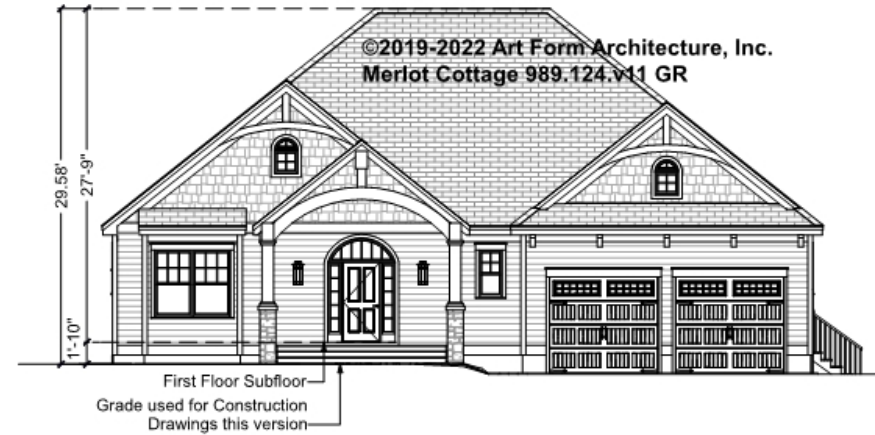


Art Form Architecture, LLC

MERLOT COTTAGE - FRONT ELEVATION

989.124.v11 GR

Some features shown are optional. Your Purchase & Sale Agreement governs, whether items are labeled "optional" in this document or not.





Art Form Architecture, LLC

MERLOT COTTAGE - RIGHT ELEVATION

989.124.v11 GR

—
Some features shown are optional. Your Purchase & Sale Agreement governs, whether items are labeled "optional" in this document or not.



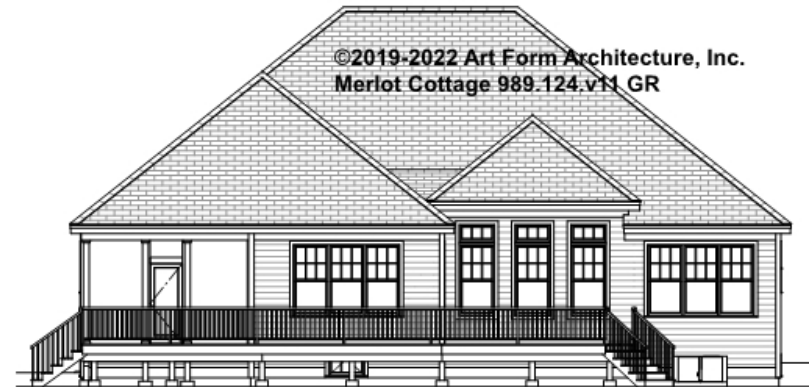


Art Form Architecture, LLC

MERLOT COTTAGE - REAR ELEVATION

989.124.v11 GR

Some features shown are optional. Your Purchase & Sale Agreement governs, whether items are labeled "optional" in this document or not.



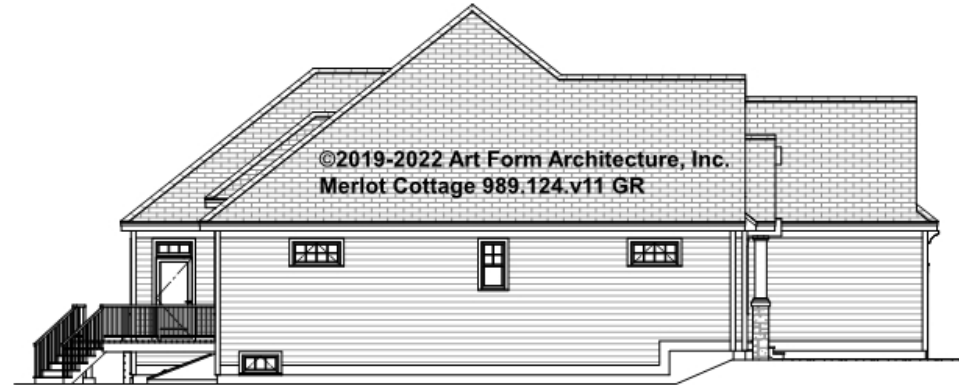


Art Form Architecture, LLC

MERLOT COTTAGE - LEFT ELEVATION

989.124.v11 GR

Some features shown are optional. Your Purchase & Sale Agreement governs, whether items are labeled "optional" in this document or not.





Art Form Architecture, LLC

MERLOT COTTAGE - REAR RENDER

989.124.v11 GR

Some features shown are optional. Your Purchase & Sale Agreement governs, whether items are labeled "optional" in this document or not.

