



Art Form Architecture, LLC

## MADISON FORD

1061.124 GR

This plan was for a specific client/builder combination that wanted more openness than we feel is ideal, especially given that it's in a 95 psf snow load zone. Call us about framing and possible cost saving measures.

In addition to our Terms and Conditions (the "Terms"), please be aware of the following:

Art Form Architecture, LLC ("Artform") requires that our Drawings be built substantially as designed. Artform will not be obligated by or liable for use of this design with markups as part of any builder agreement. While we attempt to accommodate where possible and reasonable, and where the changes do not denigrate our design, any and all changes to Drawings must be approved in writing by Artform. It is recommended that you have your Drawing updated by Artform prior to attaching any Drawing to any builder agreement. Artform shall not be responsible for the misuse of or unauthorized alterations to any of its Drawings.



Width 54.00 <sup>FT</sup>

Depth 40.00 <sup>FT</sup>

Height 28.50 <sup>FT</sup>

LIVING AREA		BEDROOMS		BATHROOMS	
	2155 <sup>FT</sup>		5		3.5
Main	2155 <sup>FT</sup>	Main	3	Main	2.5
Future	0 <sup>FT</sup>	Future	2	Future	1
2 <sup>nd</sup> Unit	0 <sup>FT</sup>	2 <sup>nd</sup> Unit	0	2 <sup>nd</sup> Unit	0

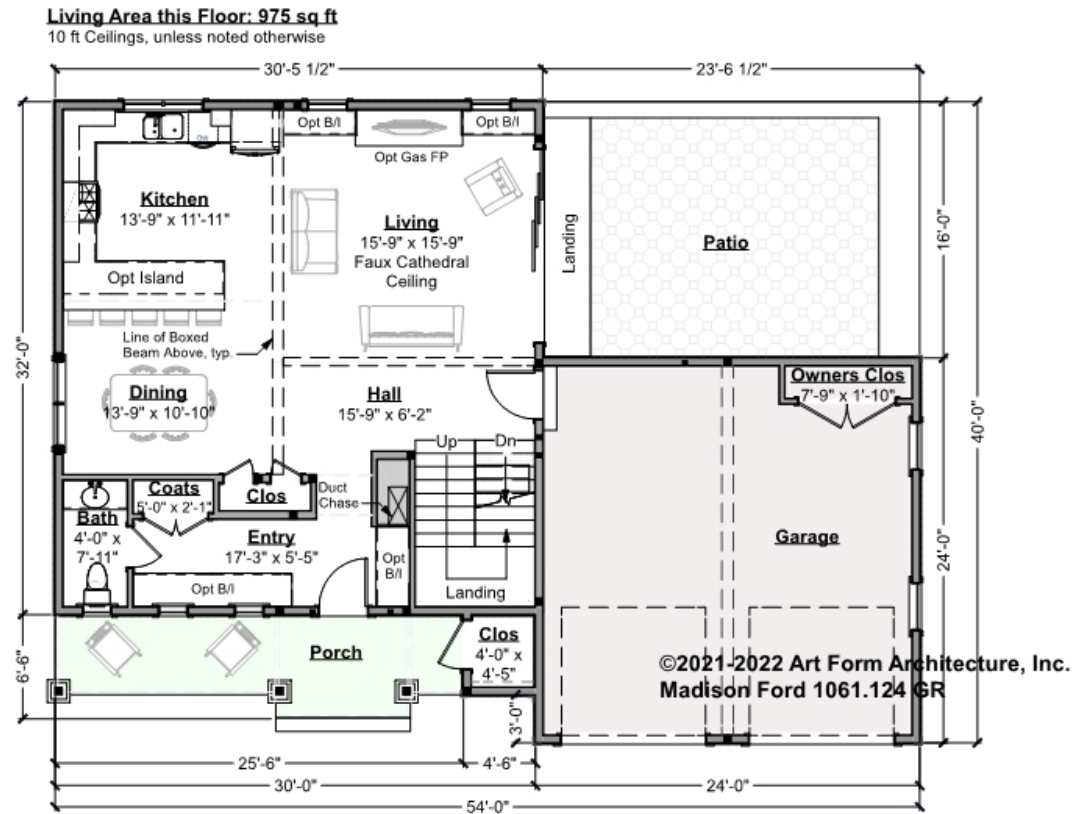


Art Form Architecture, LLC

## MADISON FORD - 1<sup>ST</sup> FLOOR

### 1061.124 GR

Some features shown are optional. Your Purchase & Sale Agreement governs, whether items are labeled "optional" in this document or not.



CLG HT SHOWN 9'-0"

CLG HT POSSIBLE 9'-0"

\* Major Change Fee, see website plan page for cost

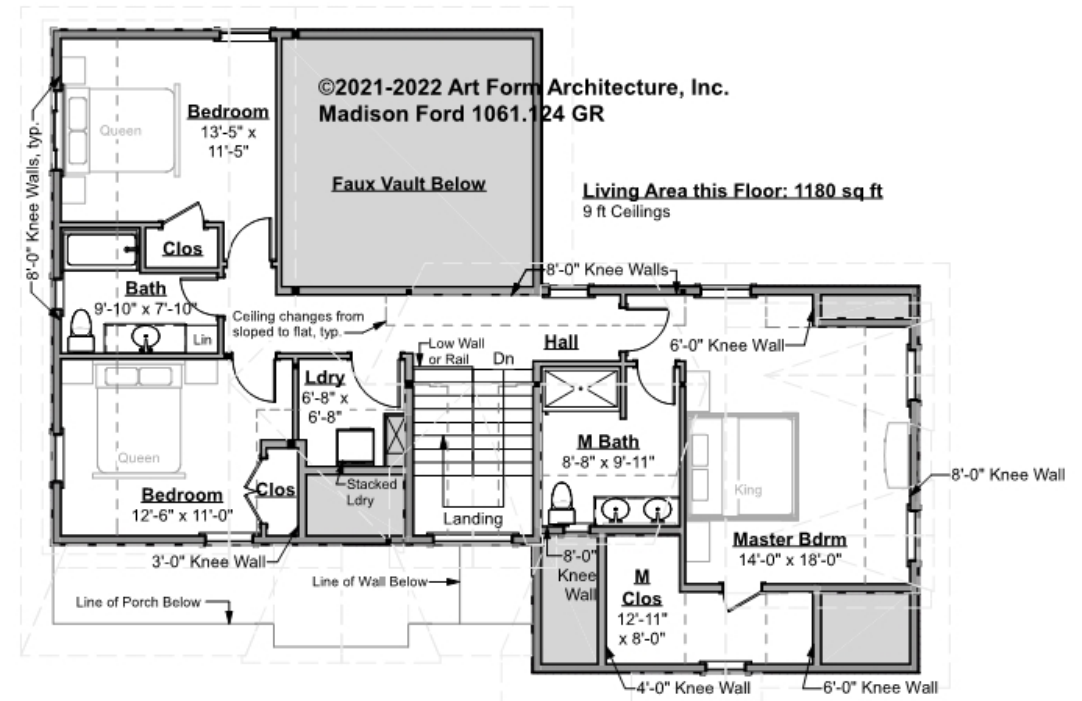
F1 LIVING AREA		F1 BEDROOMS		F1 BATHROOMS	
	975 <sup>FT</sup>		0		0.5
Main	975.00 <sup>FT</sup>	Main		Main	0.50
Future	FT	Future		Future	
2 <sup>nd</sup> Unit	FT	2 <sup>nd</sup> Unit		2 <sup>nd</sup> Unit	



## MADISON FORD - 2<sup>ND</sup> FLOOR

### 1061.124 GR

Some features shown are optional. Your Purchase & Sale Agreement governs, whether items are labeled "optional" in this document or not.



CLG HT SHOWN 9'-0"

CLG HT POSSIBLE 9'-0"

\* Major Change Fee, see website plan page for cost

F1 LIVING AREA		F1 BEDROOMS		F1 BATHROOMS	
	1180 FT		3		2
Main	1180.00 FT	Main	3.00	Main	2.00
Future	FT	Future		Future	
2 <sup>nd</sup> Unit	FT	2 <sup>nd</sup> Unit		2 <sup>nd</sup> Unit	

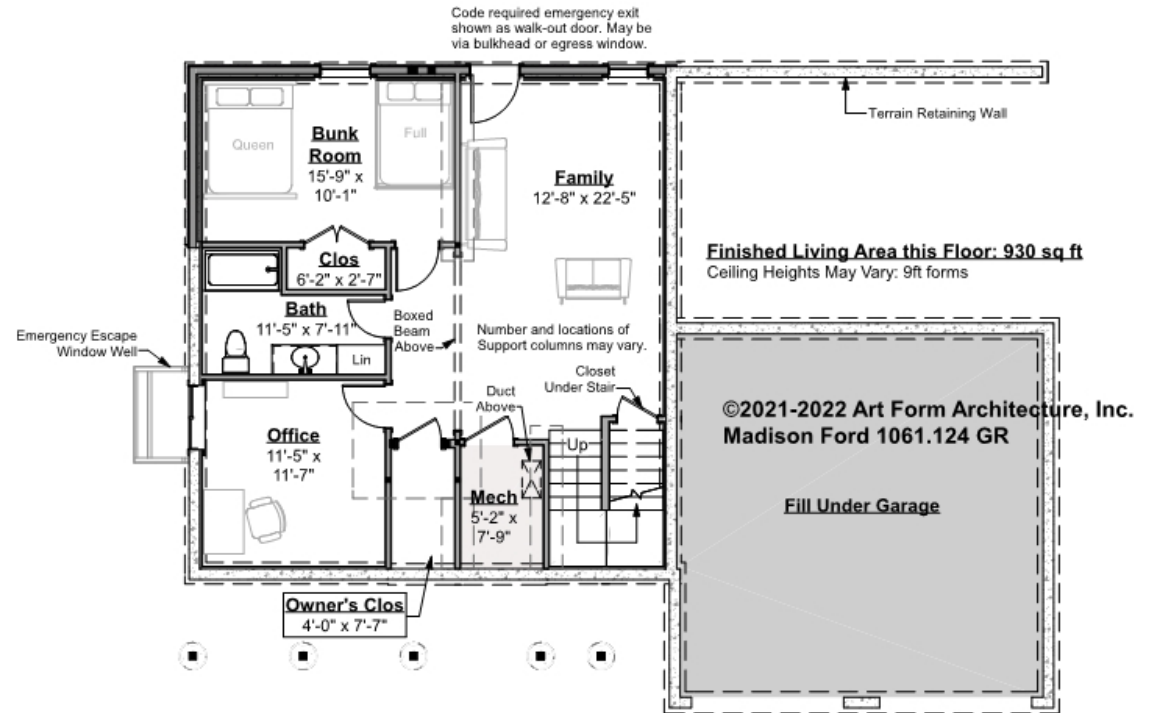


## MADISON FORD - BASEMENT

1061.124 GR

Note: finished basement area is NOT included in main or future Living Area, but IS shown on CDs. We do this so Search doesn't mislead.

Some features shown are optional. Your Purchase & Sale Agreement governs, whether items are labeled "optional" in this document or not.



CLG HT SHOWN 9'-0"

CLG HT POSSIBLE 8'-0"

\* Major Change Fee, see website plan page for cost

F1 LIVING AREA		0 <sup>FT</sup>	F1 BEDROOMS		2	F1 BATHROOMS		1
Main		FT	Main			Main		
Future		FT	Future		2.00	Future		1.00
2 <sup>nd</sup> Unit		FT	2 <sup>nd</sup> Unit			2 <sup>nd</sup> Unit		



Art Form Architecture, LLC

## MADISON FORD - FRONT ELEVATION

### 1061.124 GR

Some features shown are optional. Your Purchase & Sale Agreement governs, whether items are labeled "optional" in this document or not.





Art Form Architecture, LLC

## MADISON FORD - RIGHT ELEVATION

### 1061.124 GR

Some features shown are optional. Your Purchase & Sale Agreement governs, whether items are labeled "optional" in this document or not.





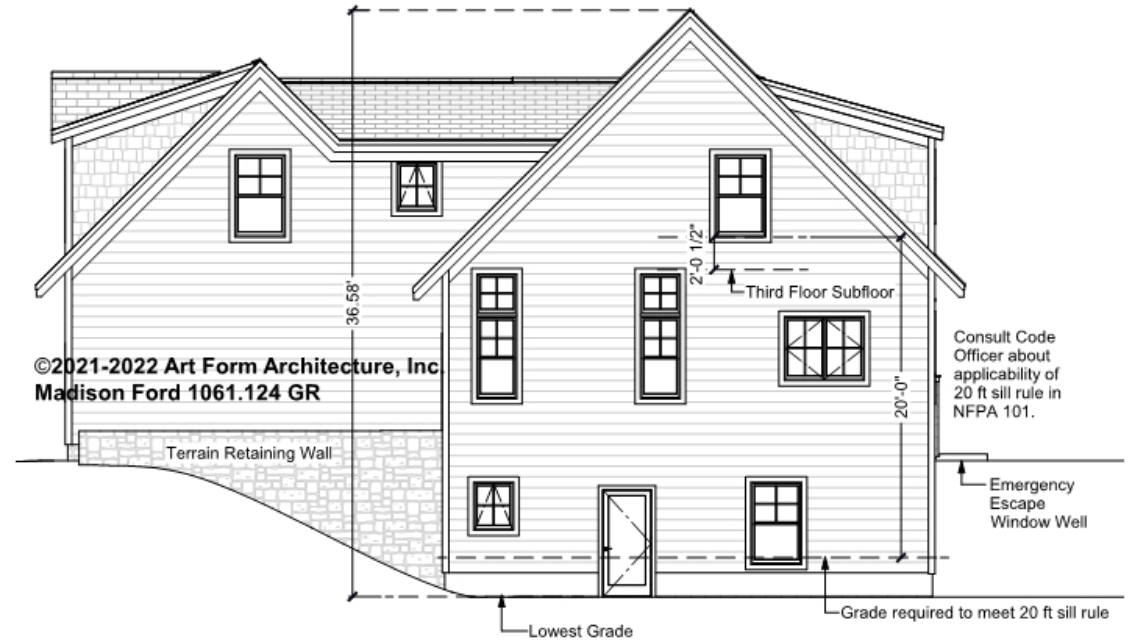


Art Form Architecture, LLC

## MADISON FORD - REAR ELEVATION

### 1061.124 GR

Some features shown are optional. Your Purchase & Sale Agreement governs, whether items are labeled "optional" in this document or not.

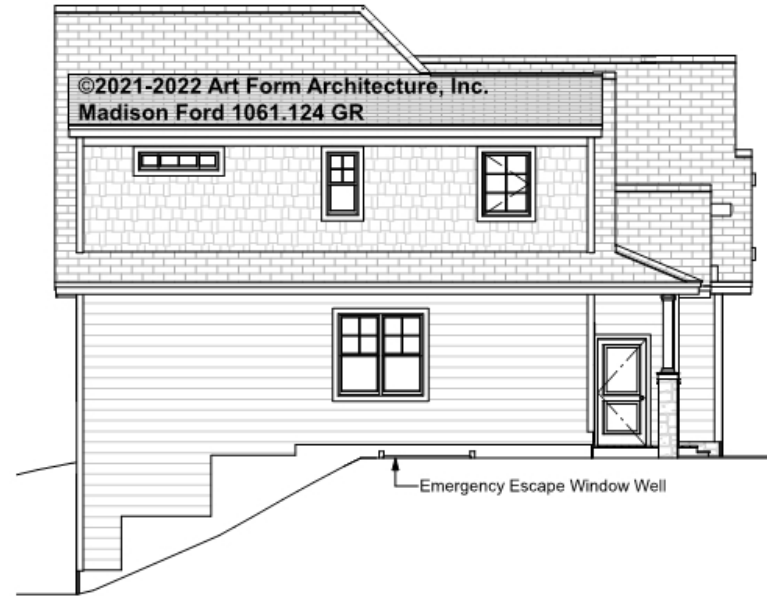




Art Form Architecture, LLC

## MADISON FORD - LEFT ELEVATION 1061.124 GR

Some features shown are optional. Your Purchase & Sale Agreement governs, whether items are labeled "optional" in this document or not.







Art Form Architecture, LLC

## MADISON FORD - REAR RENDER

### 1061.124 GR

Some features shown are optional. Your Purchase & Sale Agreement governs, whether items are labeled "optional" in this document or not.

